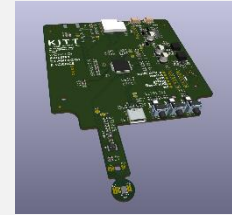


Step-by-step assembly plan WoTS Gadget 2024: the 'Omgevingsmonitor'

Step 1: Pick up the PCB

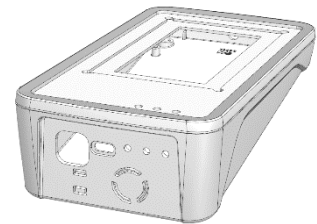
The first step is to pick up the PCB. The custom made PCB can be picked up at the exhibitor as stated on your personal route map.



1

Step 2: Collection of the housing – part 1 (Bopla housing)

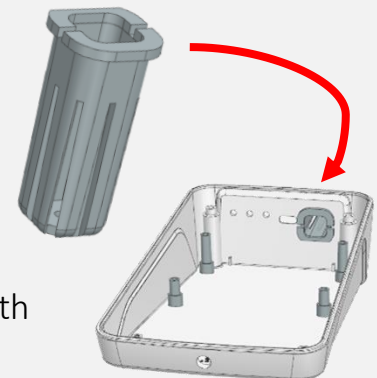
The housing consists of two parts. Collect the first part of the housing (see image) from the exhibitor as stated on your personal route map.



2

Step 3: Collecting the housing – part 2 (sensor housing, positioning bracket and light guides)

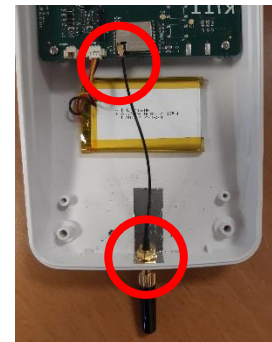
The second part of the housing consists of the sensor housing, the positioning bracket for the PCB and the light guides. Attach the sensor housing from the inside in the recess as shown in the image. Then place the positioning bracket and screw the PCB into the housing with the supplied screws. Finally, place the light guides so that they come out through the recesses in the cover.



3

Step 4: Retrieving the antenna

Then pick up the antenna and mount it with the retaining ring on the inside (see image). Connect the antenna to the PCB via the supplied cable. Make sure the cable is not twisted when mounting.



4

Continued on next page

Step 5: Picking up the solar panel

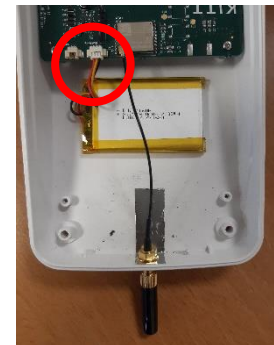
The solar panel is placed loosely on the top of the housing. After removing the solar panel, connect the cable to the connector as indicated on the PCB. In doing so, feed the cable through the recess in the lid of the housing.



5

Step 6: Collecting the battery

Then collect the battery from the exhibitor as stated on your personal route map. The battery connector, which is mounted on the battery cable, clicks onto the top of the PCB. Then stick the battery in the housing with self-adhesive tape (see image).



6

Step 7: Picking up the front foil

Note: Only perform this step after the solar panel is attached to the housing

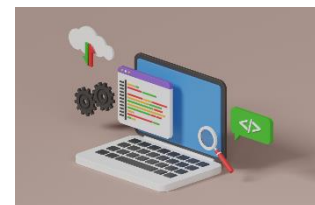
A protective front foil (sticker) must be placed to protect the top of the housing and the solar panel from moisture and dirt. Stick the front foil on the top of the lid. Make sure that the sticker is positioned so that the edges fit snugly against the housing.



7

Step 8: Activating the 'Omgevingsmonitor'

After fully assembling the 'Omgevingsmonitor', it is time to program and activate the gadget. Go to the stand, as indicated on your roadmap, to perform this step. After programming and activating, the 'Omgevingsmonitor' is ready to use. The lid can now be screwed onto the 'Omgevingsmonitor'



8