



Product Features

	Outlet Metered, Outlet Switched	Outlet Metered	PDU Metered, Outlet Switched	PDU Metered	Inline Energy Meter
	EN6000	EN5000	EN2000	EN1000	EZ1000
PDU Energy Metering and Monitoring <ul style="list-style-type: none"> PDU level watt-hour energy metering (kWh) PDU level power measurements (W) Input Phase level power measurements (V, A, VA, kWh, pf) Circuit breaker level current measurements High-accuracy, billing-grade metering capabilities Embedded memory log to record/view/report historical data User customizable alarm thresholds & notifications 	●	●	●	●	●
Outlet Level Switching <ul style="list-style-type: none"> Remote On/Off power control by individual outlet User-defined power-on time delay to sequence IT equipment Automatic sequencing to avoid inrush current overload Outlet level user security with assignable roles and user access 	●		●		
Outlet Level Energy Metering <ul style="list-style-type: none"> Outlet level watt-hour energy metering (kWh) Outlet level power measurements (V,A,VA, W, pf) Outlet level information for Green Grid Level 3 PUE Calculations 	●	●			
Design Features <ul style="list-style-type: none"> Low profile, space saving design Ultra low profile circuit breakers on most models Adjustable tool-less mounting system Color-coded outlets Locking IEC outlets and locking power cord compatible Field rewirable input cord for front or top mounting 	●	●	●	●	
Environmental & Security Management <ul style="list-style-type: none"> Optional Plug & Play environmental sensors including temperature, humidity, dry contact water leak, and others Rack access monitoring with door contact switch User customizable alarm thresholds and notifications 	●	●	●	●	●
Network Management and Local Display Interface <ul style="list-style-type: none"> Full featured network management and alerting capabilities supporting HTTP, HTTPS, SSH, Telnet, SNMP, FTP, and email Strong encryption, passwords, and advanced authorization options including local permissions, LDAP/S, and Active Directory Daisy Chain up to 4 Rack PDU's and 24 environmental sensors through a single IP address Largest-in-class, high-visibility, OLED display 	●	●	●	●	●
Circuit Breaker Status Monitoring <ul style="list-style-type: none"> Active monitoring and alarming of circuit breaker on/off status 	●	●	●		

enLOGIC

Enlogic was founded in 2011 by a group of former APC technology executives dedicated to provide innovative solutions to better address growing data center energy management needs. With our commitment to continuous improvement, Enlogic has become the technology leader and expert in energy management, helping data centers across the world to discover waste, improve operational efficiency, and optimize energy utilization.

Enlogic's global presence includes operations in the United States, UK, Ireland, Germany, Netherlands, Australia, New Zealand, Mainland China, Hong Kong, Singapore and Malaysia. At Enlogic, our global R&D team has more than 30 patent applications, with 22 directly related to rack power and environmental management.

With this dedication, we provide the most innovative solutions with the highest quality and reliability to solve any rack management problem.

Best-in-Class: Enlogic was awarded the 2014 DCS Power and Cooling Product of the Year by end users and peers.



Global Headquarters

Enlogic Systems, LLC
St. Louis, MO USA
sales@amer.enlogic.com
636 821 5225

Enlogic Systems Europe, LTD

Worcester, UK
sales@emea.enlogic.com
+44 1905 5401 700

Enlogic Systems – Australia

Melbourne, Australia
sales@apac.enlogic.com
+61 39 9997 303

Enlogic Systems Asia Pacific, LTD

Hong Kong
sales@apac.enlogic.com
+852 2732 2886

Enlogic Systems China, LLC

Shanghai, China
sales_cn@apac.enlogic.com
+86 21 3461 2525

www.enlogic.com

Energy Management Solutions

Introducing the world's most innovative intelligent Power Distribution Units (iPDUs) designed to simplify rack energy and environmental management of your data center.

Enlogic iPDUs provide comprehensive, accurate energy and environmental data needed to utilize power resources efficiently, enhance capacity planning decisions, improve uptime, measure PUE (power usage effectiveness), and drive green data center initiatives to save you energy and money.

Enlogic's best-in-class design offers industry-leading metering accuracy, robust high temperature rating, comprehensive environmental management capabilities, exclusive hot-swap intelligence module, and patented Dual Network Access (DNA), all housed within an ultra-low profile chassis to save rack space and enable access to hot-swappable equipment.

■ **Metered iPDU (EN1000 Series):** Networked, real-time input and circuit breaker level monitoring for early threat warning, capacity & load balancing, and energy use optimization.

■ **Metered, Outlet Switched iPDU (EN2000 Series):** All features of the EN1000 series combined with remote, outlet on/off switching for power-up sequencing, power cycling and outlet use management.

■ **Outlet Metered iPDU (EN5000 Series):** All features of the EN1000 series combined with outlet level power & energy metering.

■ **Outlet Metered, Outlet Switched iPDU (EN6000 Series):** Comprehensive solution including features of both the EN2000 and EN5000 series.

■ **Inline Energy Meter (EZ1000 Series):** Real-time input circuit level monitoring solution for adding network monitoring to basic PDUs or stand-alone equipment.

← The Critical Component

Power and Energy Metering (V, A, VA, W, kWh, PF) to +/- 1% billing-grade accuracy.

Circuit Breaker Status Monitoring provides active monitoring and alarming of circuit breaker on/off status (excludes EN1000 series).

Locking IEC Receptacles provide secure power connection when used with optional locking power cords.

Hot Swappable Network Management Card for industry best MTTR.

Dual Network Access in 2N configuration for tenant/client applications or network redundancy. (patent pending)

Environmental Monitoring ready with support for up to 6 plug-and-play sensors.

Color-Coded Outlets by Breaker for easy identification.

Adjustable Tool-less Mounting for ease of installation.

Field Rewireable Power Cord Adjustable length and orientation to site conditions.

Premium Hydraulic-Magnetic Branch Circuit Breakers are stable at extreme hot aisle temperatures.

Large, easy-to-view OLED Display.

Daisy chain to manage and monitor up to 4 PDUs & 24 environmental sensors through a single IP address.

Ultra-Low Profile Design for better access to rack mounted equipment

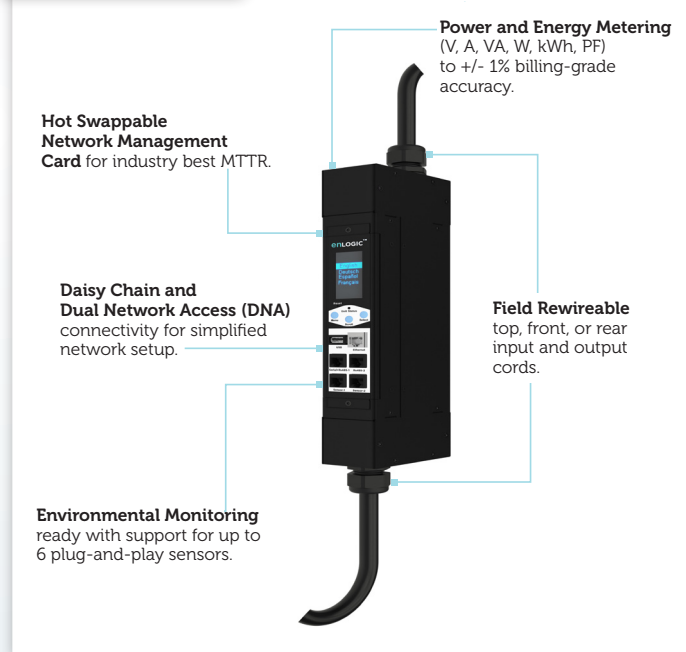
Inline Energy Meters

Enlogic's Inline Energy Meters can be used to monitor power and environmental conditions for attached IT equipment.

The EZ Series boasts billing-grade power and energy metering, and can connect up to 6 external sensors for complete threat detection and warning.

Inline Energy Meters eliminate the need for costly, time-consuming changes in a data center environment. Without losing critical uptime, or incurring costly engineering requirements, Inline Energy Meters save time, money, and reduce data center risk.

Features



Accessories

Simplify rack environmental management with Enlogic plug and play sensors. Every Enlogic Rack PDU and Inline Energy Meter is designed to accommodate up to 6 external sensor probes with user customizable alarms and warnings. Each sensor is engineered with an embedded analog-digital signal processing microchip for extended range and high accuracy operation. Every sensor probe is factory calibrated and designed for easy installation, setup, and identification.



Power Cords

Enlogic locking IEC power cords provide protection against accidental power loss of your attached IT equipment when used with any Enlogic PDU or APC® AP8000 Series PDU. The locking IEC plug fits into the IEC C13 or C19 outlet with a locking tab feature. The patented IT-equipment connector positively locks into the attached equipment power inlet with an internal locking mechanism on the ground earth pin.



Hot Swap Technology

Enlogic's exclusive hot-swap design allows quick and easy replacement without the need for costly downtime to attached IT equipment. Enlogic makes recovery easy with a utility grade kWh meter which continues to run before and during the replacement process for no loss of energy consumption data. User configuration settings are stored separately; hence the network management card can be replaced and reconnected to the network in less than 2 minutes.

Hot Swappable Network Management Card



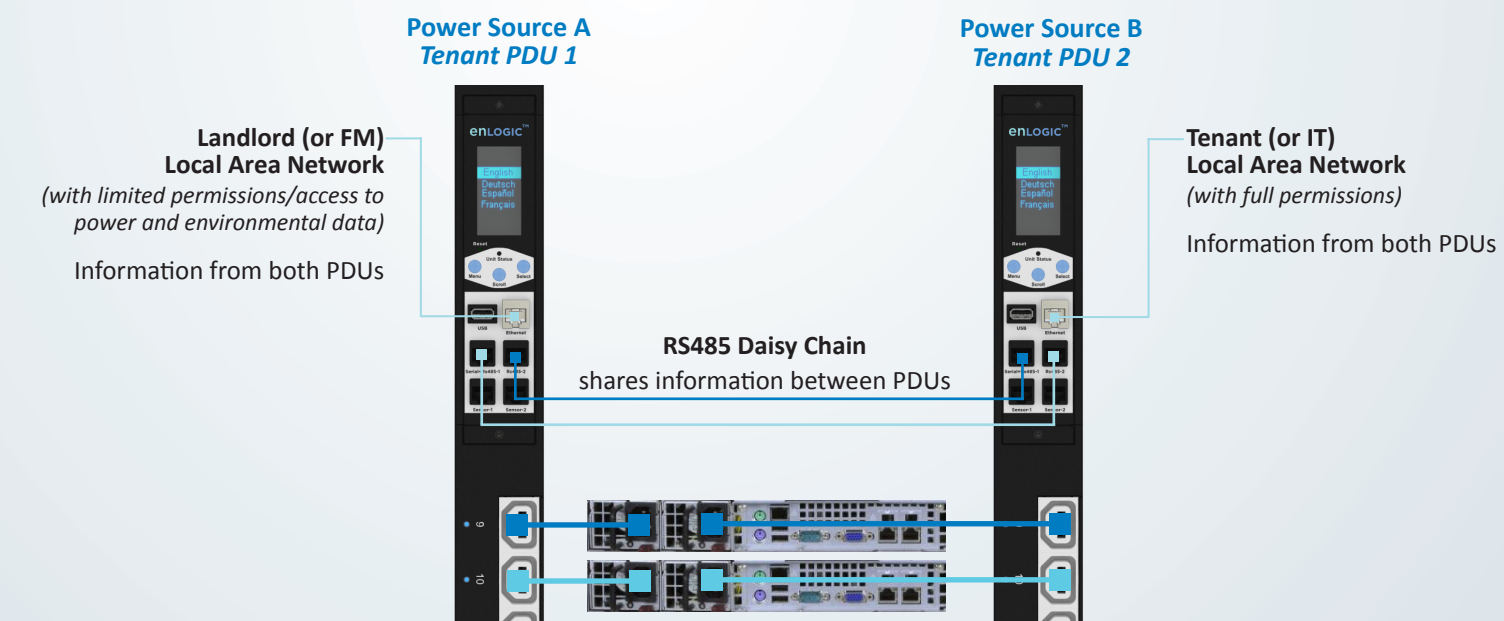
enLOGIC Dual Network Access

Two Separate Networks to Share Vital Data Directly at PDU Level



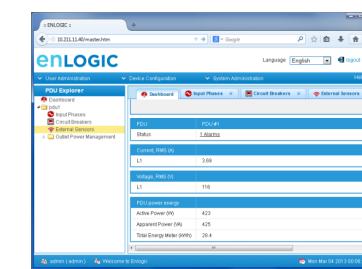
Enlogic's Patented Dual Network Access (DNA) allows for visibility of real-time vital statistics and operating information to two separate and secure networks.

DNA is typically deployed where two different groups need iPDU access; i.e., in colocation where both tenant and landlord require iPDU data on their own separate LANs. This eliminates the need for costly, separate landlord branch circuit kWh metering.



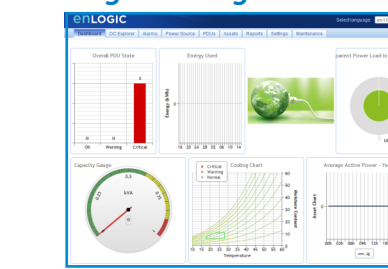
Remote iPDU Management

Built-in Web Interface



Directly connect to individual iPDUs with your web browser via your LAN to setup and manage alarms and data.

Enlogic Management Software



Remotely connect to Enlogic Software to manage multiple iPDUs for a combined dashboard view, consolidated alerts, & reporting.

DCIM Integration



Integrate your Enlogic iPDU to communicate with your existing DCIM or BMS solution through SNMP or optional Modbus interface.