



Smart Lights, Bright Cities

Frank den Ridder

LED EVENT 2016

Design en engineering trends voor LED-applicaties

BE WOENSDAG 30 NOVEMBER 2016
TECHNOPOLIS, MECHELEN
NL DONDERDAG 1 DECEMBER 2016
CONGRESCENTRUM 1931
BRABANTHALLEN, DEN BOSCH

It starts with light. Providing future proof solutions

Het verlichtingsnetwerk is de basis voor de smart city met de lantaarnpaal als vertrekpunt. Onze armaturen zijn dankzij de modulaire opbouw en open source techniek vandaag al gereed voor toekomstige ontwikkelingen.

Sustainer is an integration, prolongation and extension of existing companies

Dazzletek

Dazzletek

- 15 clients, 14K installed modules
- R&D Team with in depth knowledge of sensors and smart RF solutions.
- IP on Lighting Control System

RF Lighting Control



Sustainer

Sustainer enables clients to build a sustainable society with modern-future proof-smart-lighting and smart city solutions with a stable TCO.

To enable the open innovative eco-system Sustainer provides on top of the traditional luminaire business Smart Services with open technology.

Factory Philips Emmen

Factory Philips Emmen

- 240 resources, production capacity of
- 350K luminaires a year
- In depth knowledge of lighting market
- Former Indal/Industria organization
- Flexible production facility – able to deliver tailor made products in various quantities

Factory



Added

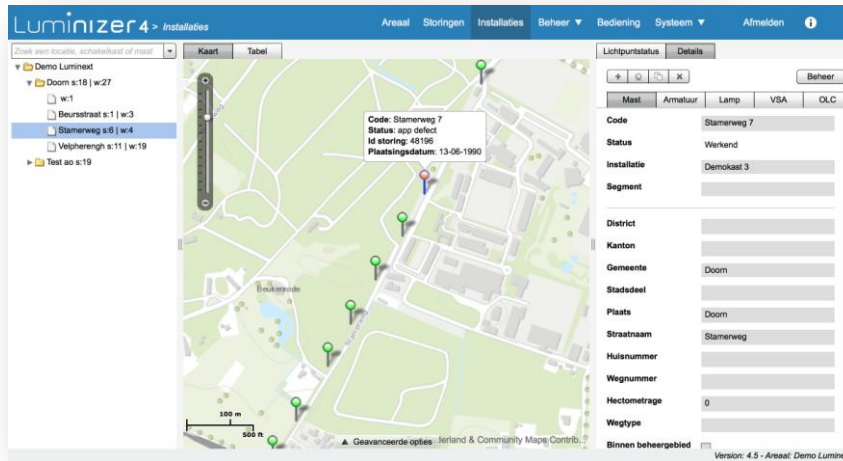
Smart factory with production and assembly facilities based on latest technologies.

System Overview



Rol van het backoffice platform

Failure geolocalisation



Luminext

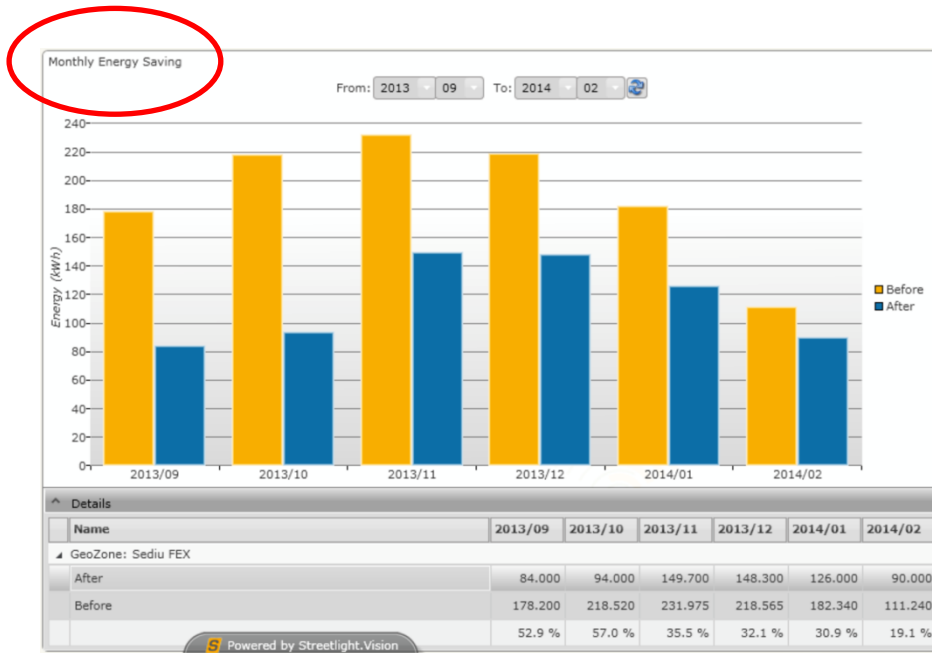


Master Alarms

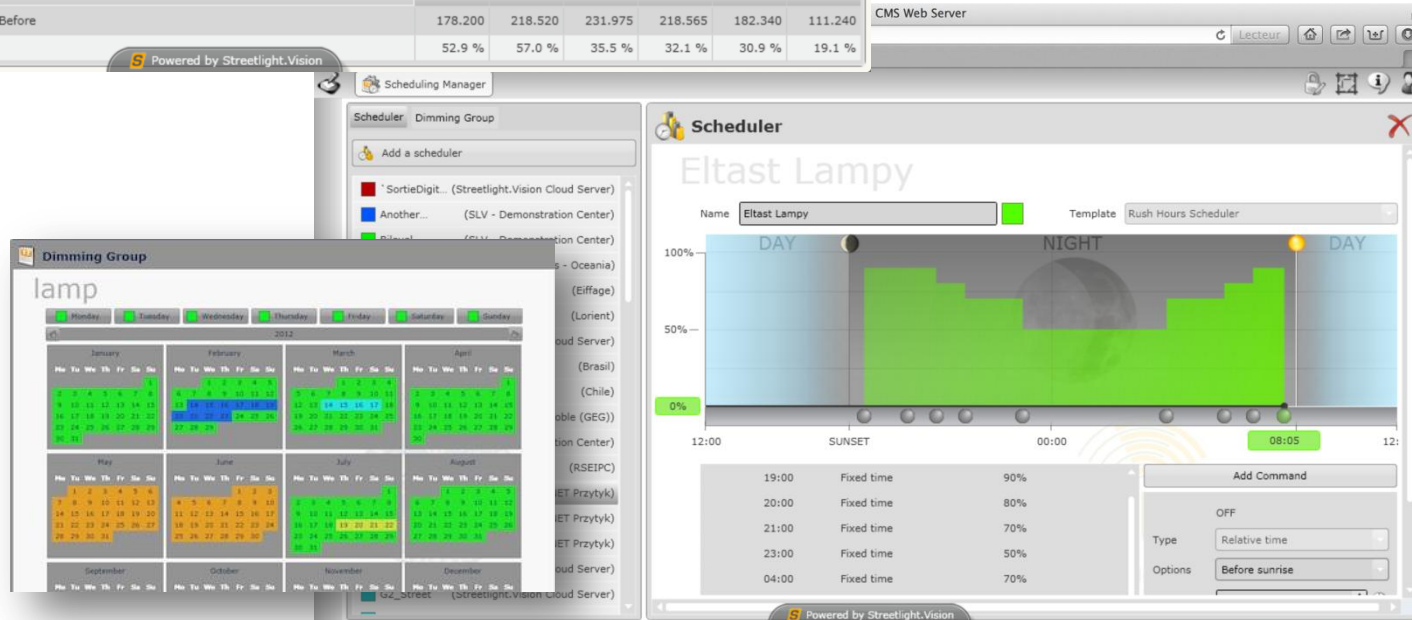
Rue Royale	device device[2] on SC_of_zone.2[2]	?	✓	✓	...	Lamp Switch Command
Rue Sainte-Catherine	device device[13] on SC_of_zone.2[2]	?	✓	✓	...	Dimming level - Commu
Lyon 4ème Arrondissement	device device[14] on SC_of_zone.2[2]	?	✓	✓	...	Lamp Switch Feedback
Boulevard des Canuts	device device[15] on SC_of_zone.2[2]	?	✓	✓	...	Dimming level - Feedba
Croix Rousse	device device[16] on SC_of_zone.2[2]	?	✓	✓	...	Main Current
Rue du Charlot d'Or	device device[17] on SC_of_zone.2[2]	?	✓	✓	...	Mains Voltage
Lyon 6ème Arrondissement	device device[18] on SC_of_zone.2[2]	?	✓	✓	...	Power
Dublin	device device[19] on SC_of_zone.2[2]	?	✓	✓	...	Power Factor
Hong-Kong	device device[20] on SC_of_zone.2[2]	?	✓	✓	...	Energy
Paris	device device[21] on SC_of_zone.2[2]	?	✓	✓	...	Lamp Burning Hours
	device device[22] on SC_of_zone.2[2]	?	✓	✓	...	
	device device[23] on SC_of_zone.2[2]	?	✓	✓	...	
	device device[24] on SC_of_zone.2[2]	?	✓	✓	...	
Total		1				

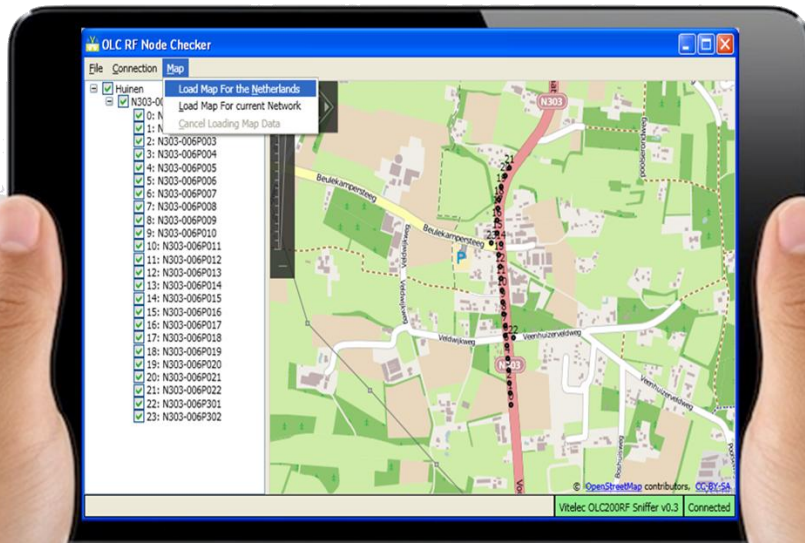
Name	Priority	Trigger	Creation time	State
GeoZone: DEMO - Place des Terreaux (4 items)				
Alarm Name User	3	Alarm Name Admin	09:10:19 09:33	🔔
Acknowledge alarm : This alarm is now fixed ! Thanks				
Alarm Name User	3	Alarm Name Admin	09:10:15 23:32	🔔
Alarm Name User	3	Alarm Name Admin	09:10:15 23:33	🔔
Alarm Name User	3	Alarm Name Admin	09:10:15 23:38	🔔
GeoZone: DEMO - Saint Stephen Green (5 items)				
No data from this Segment Controller	3	No data from this Segment Controller	09:10:19 09:32	🔔

Failure Analysis



The StreetLight Vision Open Source platform adds up to the maturity of the complete Lighting Control solution.





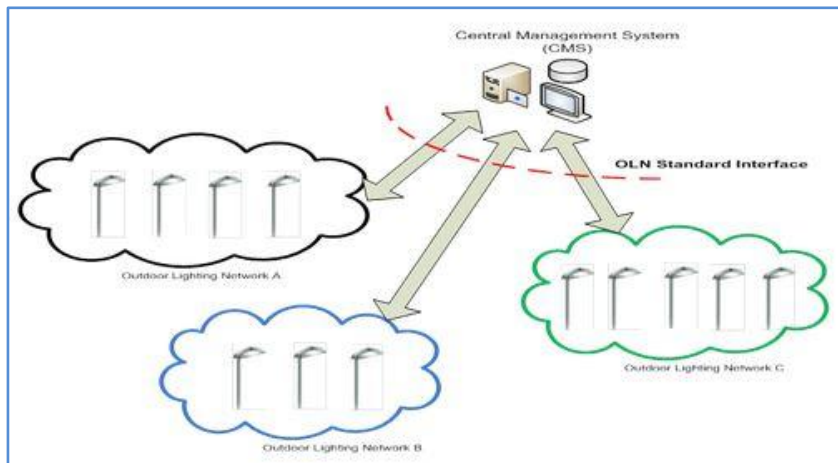
StreetLight Vision
Back Office is
compliant with the
TALQ specification



TALQ Consortium

ALiS®
Approved public lighting management software

For the standardization of a management software interface for Outdoor Lighting Networks



Sustainer
smart lights, bright cities

Schröder

PHILIPS
**Philips
Lighting**

OSRAM

Silver Spring
NETWORKS

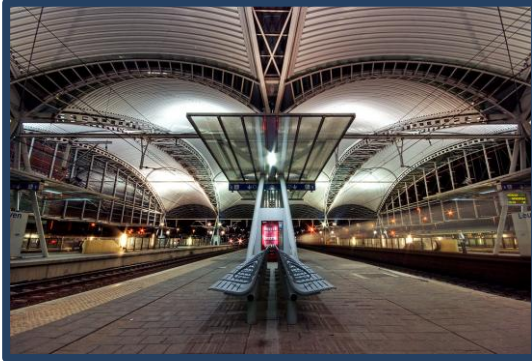
Streetlight.vision

ZUMTOBEL

Dazzletek / Sustainer projects



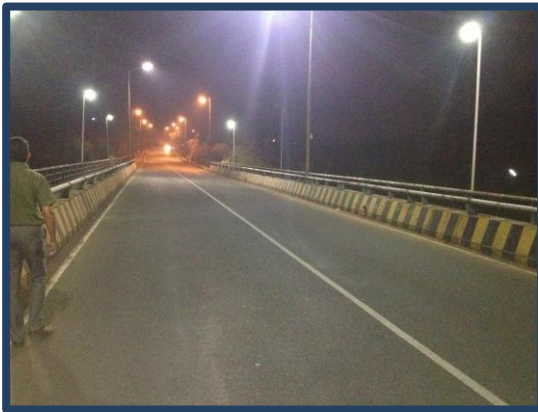
Enkele internationale projecten



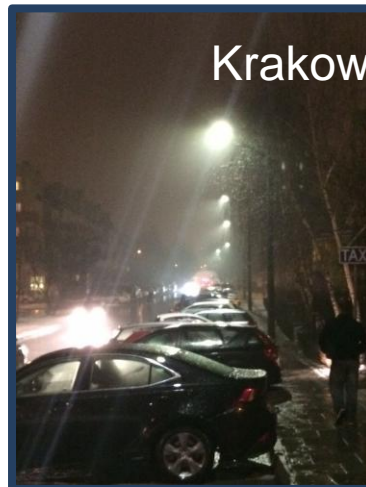
Leuven, Belgie



Cape Town, SA



Chennai, India



Krakow, Poland



Maastricht

From smart lighting to bright cities

Prepare the future

Streetlights

Environmental
Sensors

Low Voltage

Electrical
Cabinets

Traffic
counting

Network
Routers

Streetlight
cabinets

Energy meters

Bike
Stations

Traffic Light

Camera

Bus Stops

Advertisin

Connecting the dots...

Parking place
detection

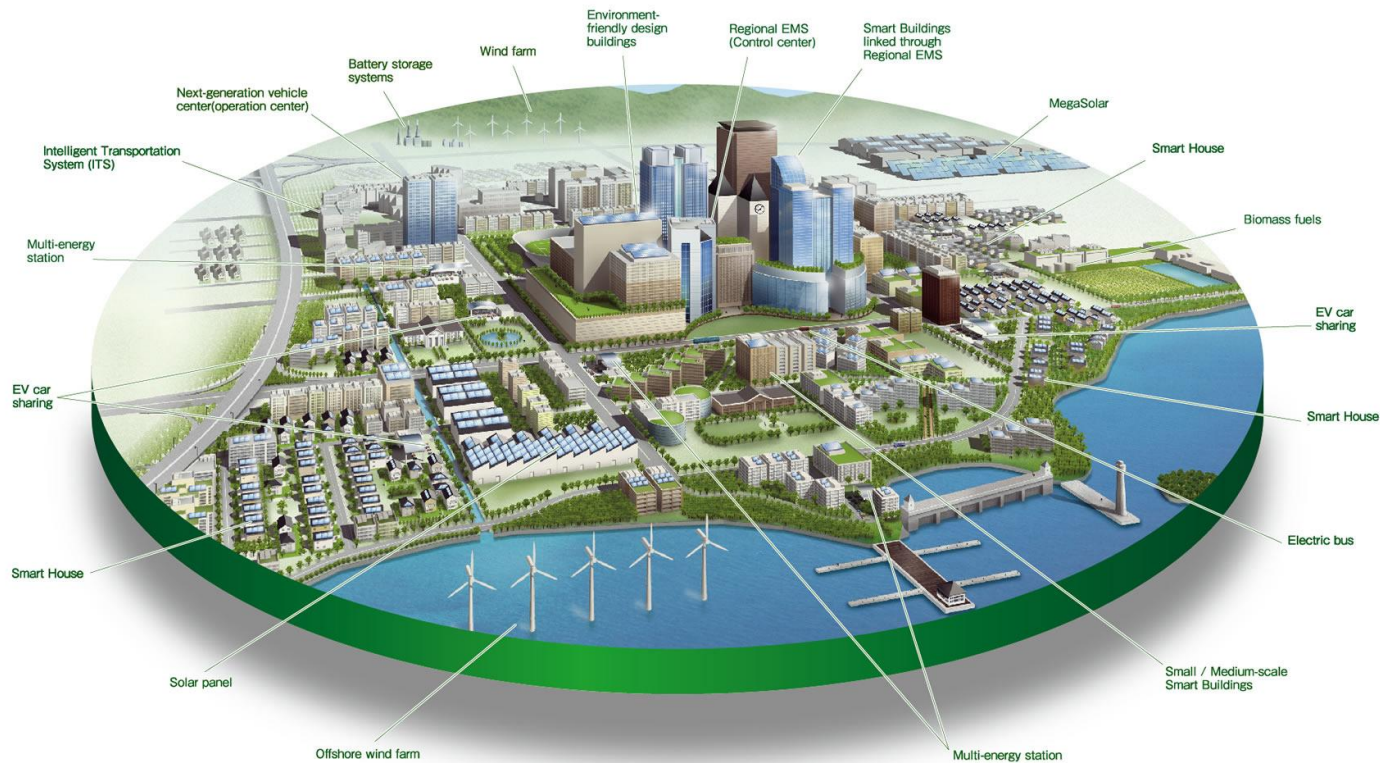
Waste
Container

Gas and
Water meters

Car Chargers



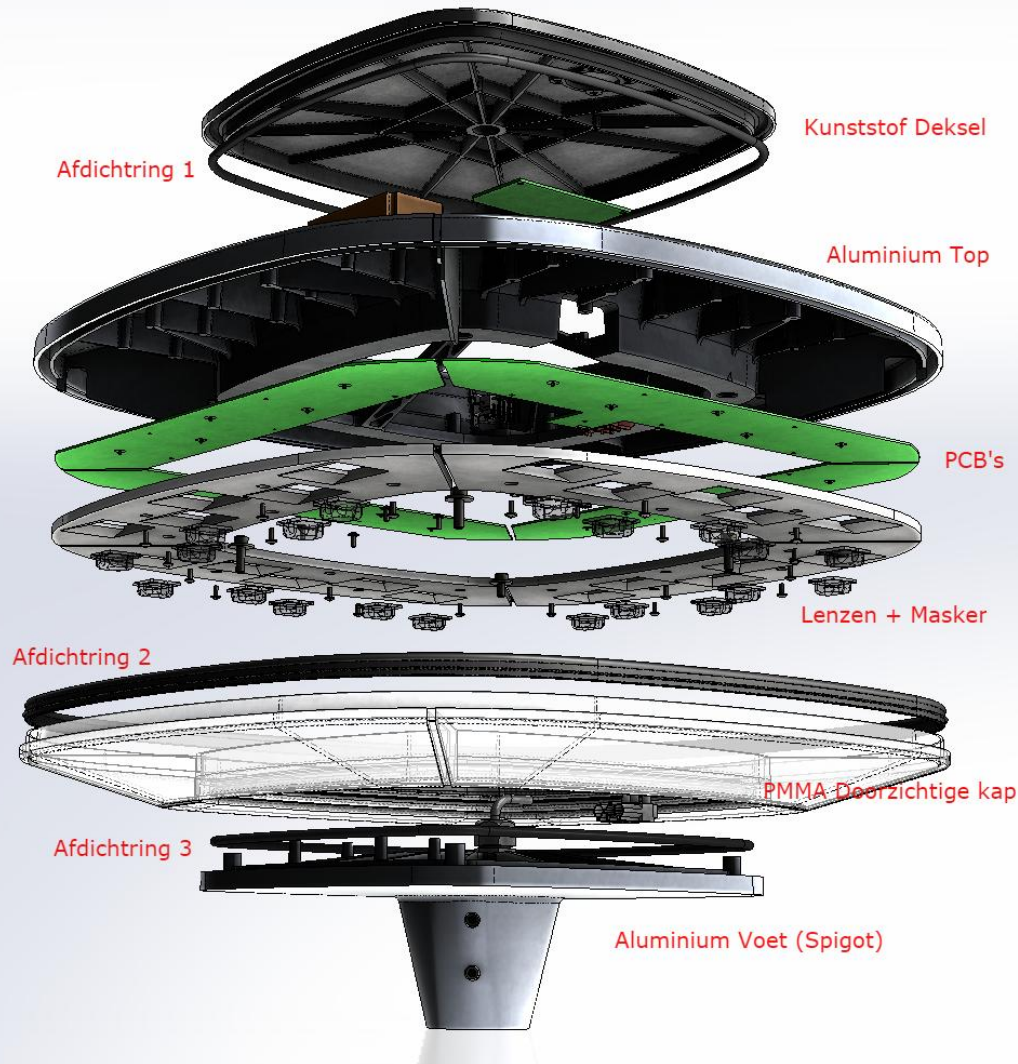
What business are we in?



Sustainer Vision:

The market is moving from traditional lighting towards smart lighting, smart outdoor luminaires. By integrating sensors and connectivity into the luminaire, all kind of applications can be build to improve the quality of life for citizens. An open eco system will create the necessary condition to facilitate & accelerate this development.

Opbouw Sustainer1



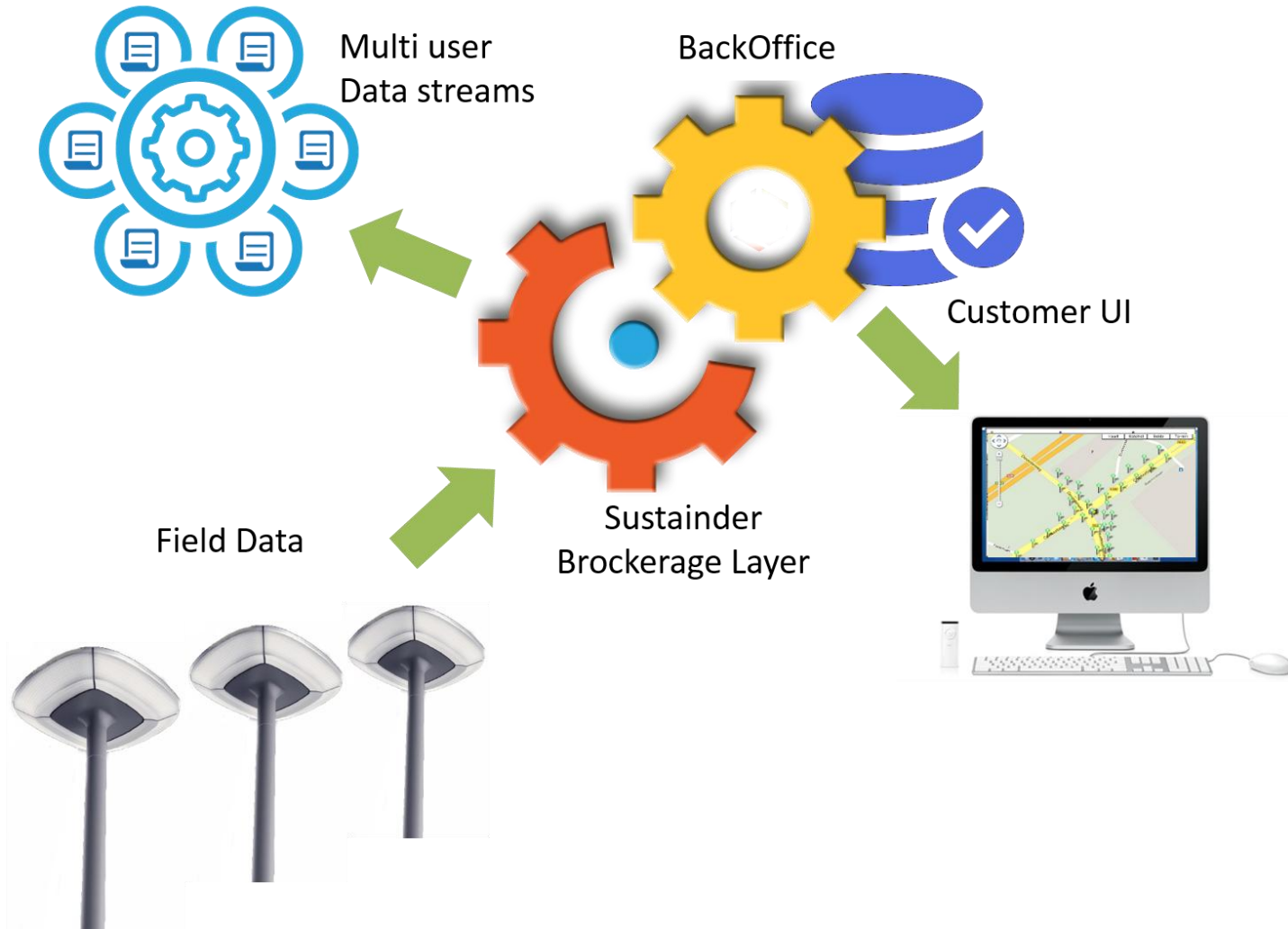
Sustainer 1



Sustainer Flex Technology



Brokerage Layer





Future Proof Technology



Partner up. The smart city is a team effort

We hebben onze eigen specialistische rol binnen het eco-systeem van slimme verlichting. Door samenwerking met complementaire partijen behalen we het optimale resultaat.

Dank voor uw aandacht

www.sustainer.com

info@sustainer.com