



PLANT

o f t h e F u t u r e

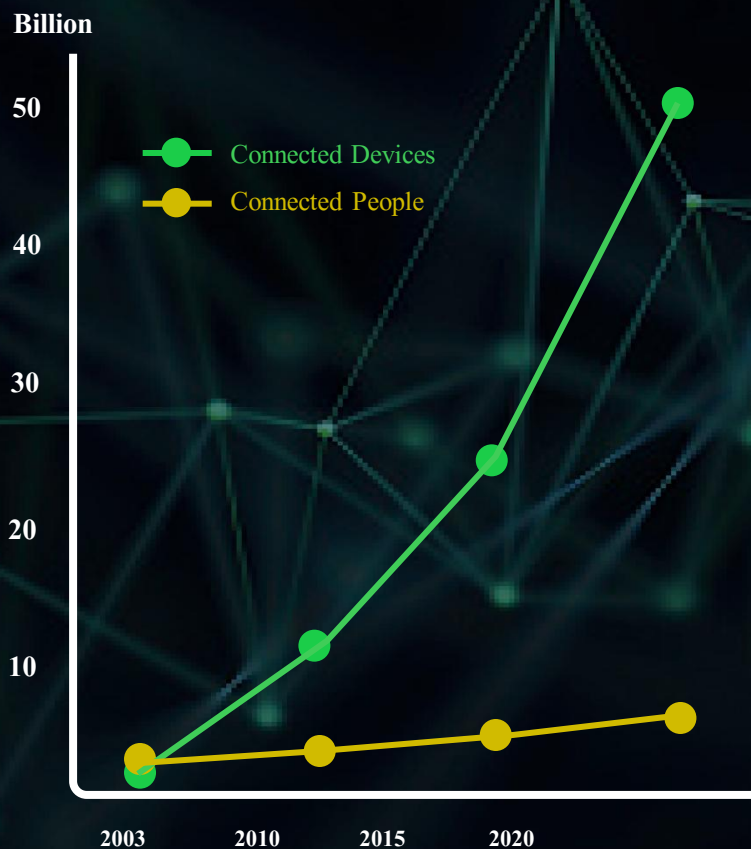
16 Maart 2016

Rob van den Bos / Product Manager Automation

16 maart 2017 ••• Hart van Holland Nijkerk

Industrial Ethernet

Making Demand CONNECTED and EFFICIENT



INTERNET OF THINGS

Source : Cisco, Internet World Statistics

Life Is On

Schneider
Electric

Making Demand CONNECTED and EFFICIENT

IoT

ACCELERATION

Driven by pervasive penetration of
MOBILITY & ANALYTICS

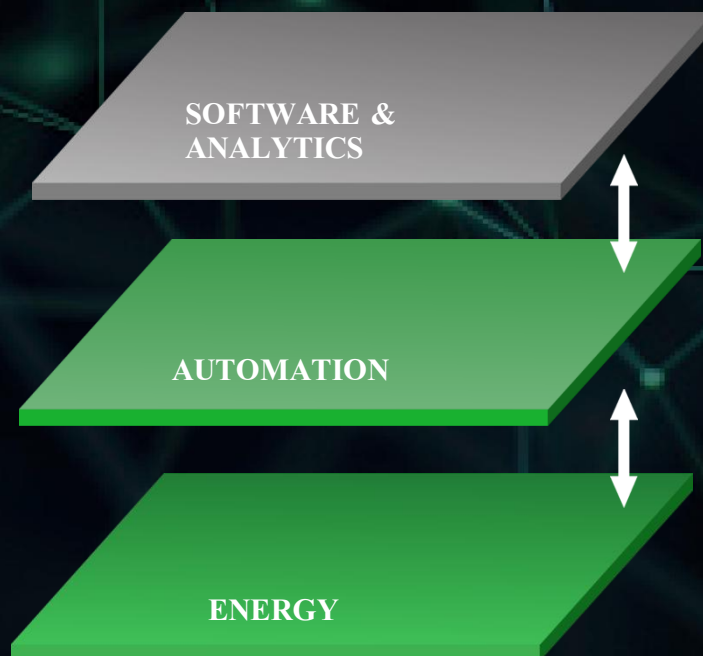
Making Demand CONNECTED and EFFICIENT

IoT

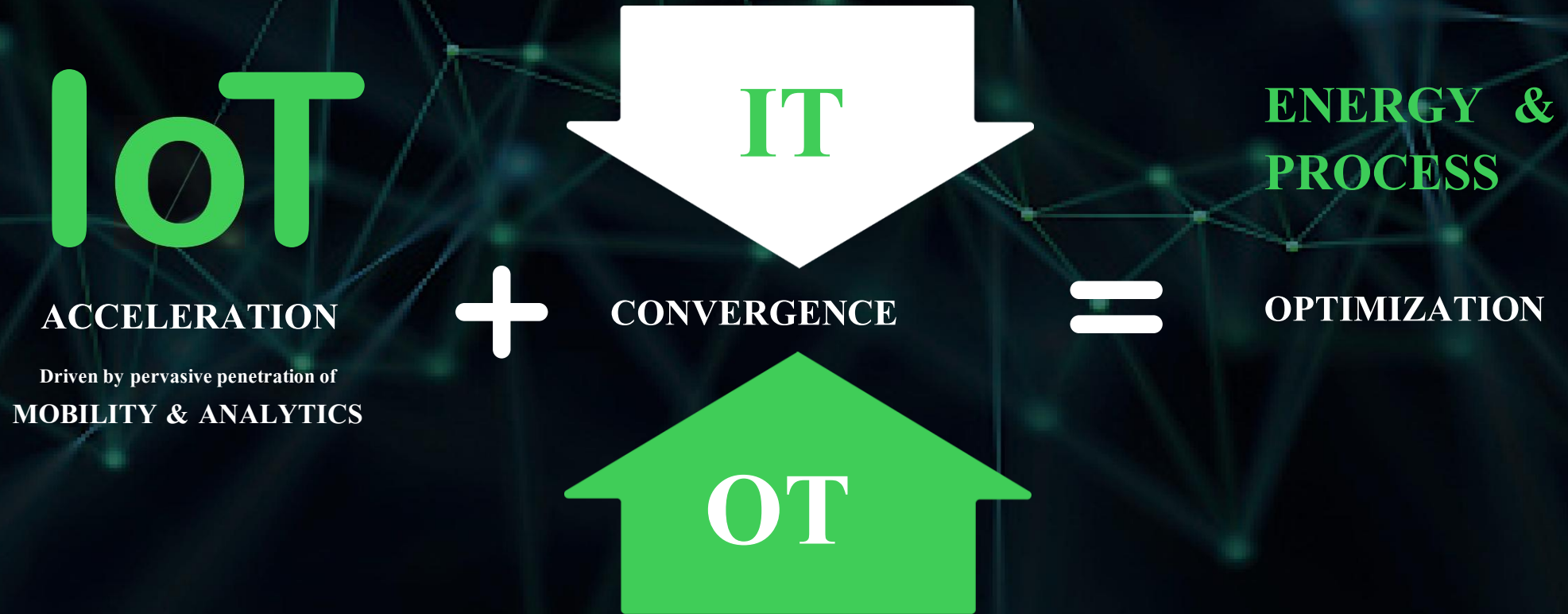
ACCELERATION

Driven by pervasive penetration of
MOBILITY & ANALYTICS

+



Making Demand CONNECTED and EFFICIENT



Schneider
Electric

Serves

70%

world energy
consumption

Massive Untapped
Efficiency Potential

SOFTWARE &
ANALYTICS

AUTOMATION

ENERGY

4

Markets

>30%



Building & Residential

~2%



Data Centers & Networks

>30%



Industry



Infrastructure

>82%

Buildings

~58%

Industry

~79%

Infrastructure

Source: World Energy Outlook 2012,
OECD / IEA, Internal analysis

What's driving DIGITIZATION in industries?



CONNECTIVITY

- Lower cost of sensors
- Standards-driven connectivity



MOBILITY

- Pervasive and affordable communication
- Rich UI
- Recognition of operator



CLOUD

- Massive aggregation of data
- Stakeholder sharing
- Concentration of specialists



ANALYTICS

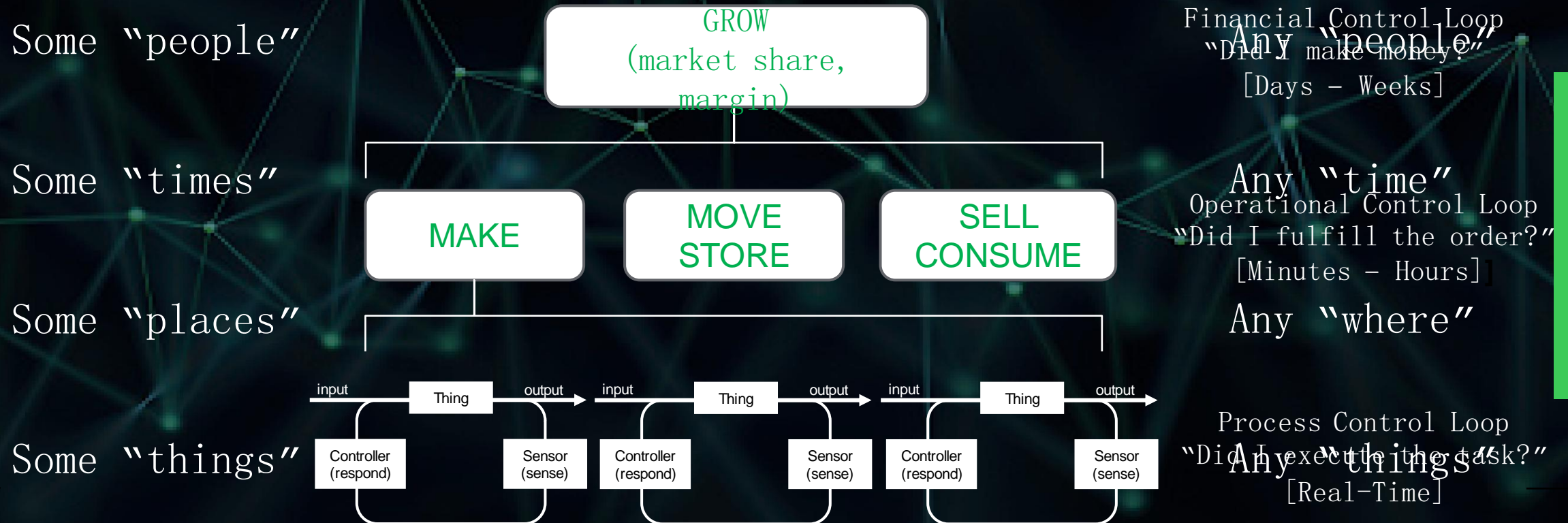
- New functionalities
- Artificial intelligence optimizing performance at all levels

Life Is On

Schneider
Electric

For business, IT-OT convergence is a critical st

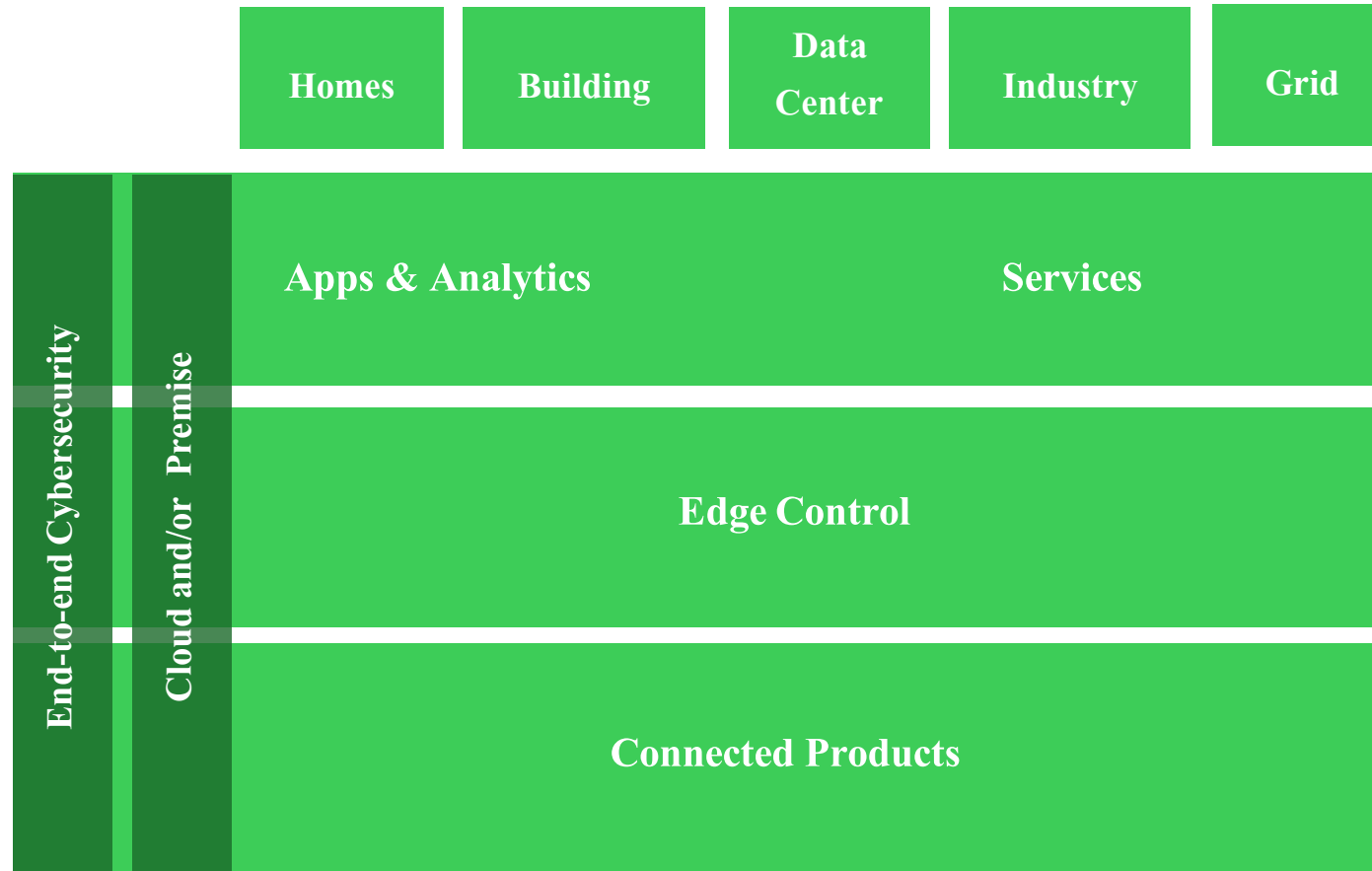
IT today: Managing a world of "Persons"



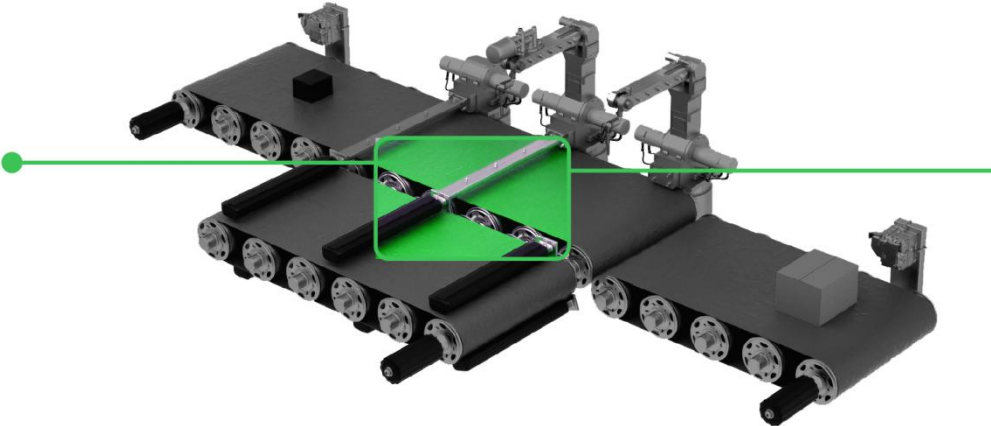
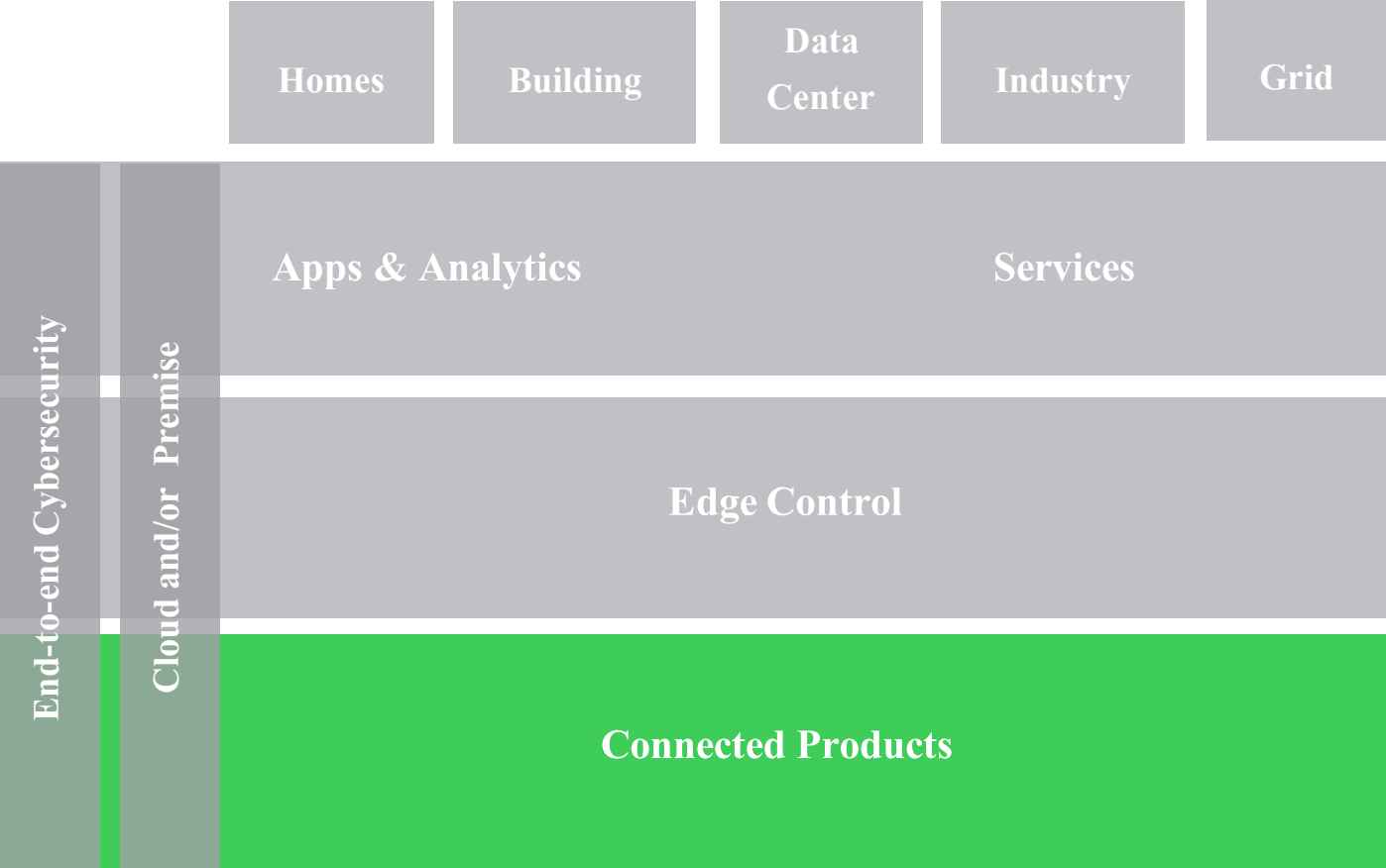
OT today: Controlling a world of "Things"



INNOVATION FOR VALUE



Connected products: the smart “things”

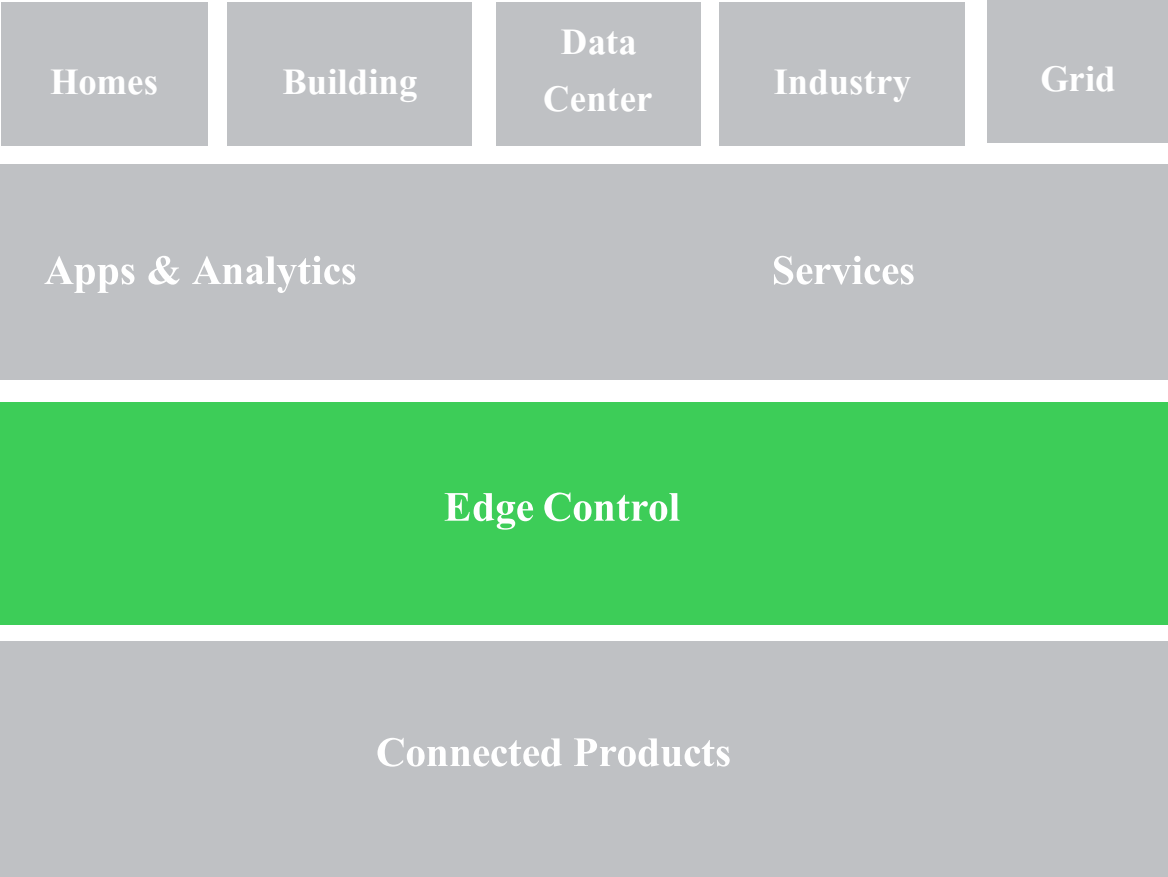


A range of variable speed drives for smart machines

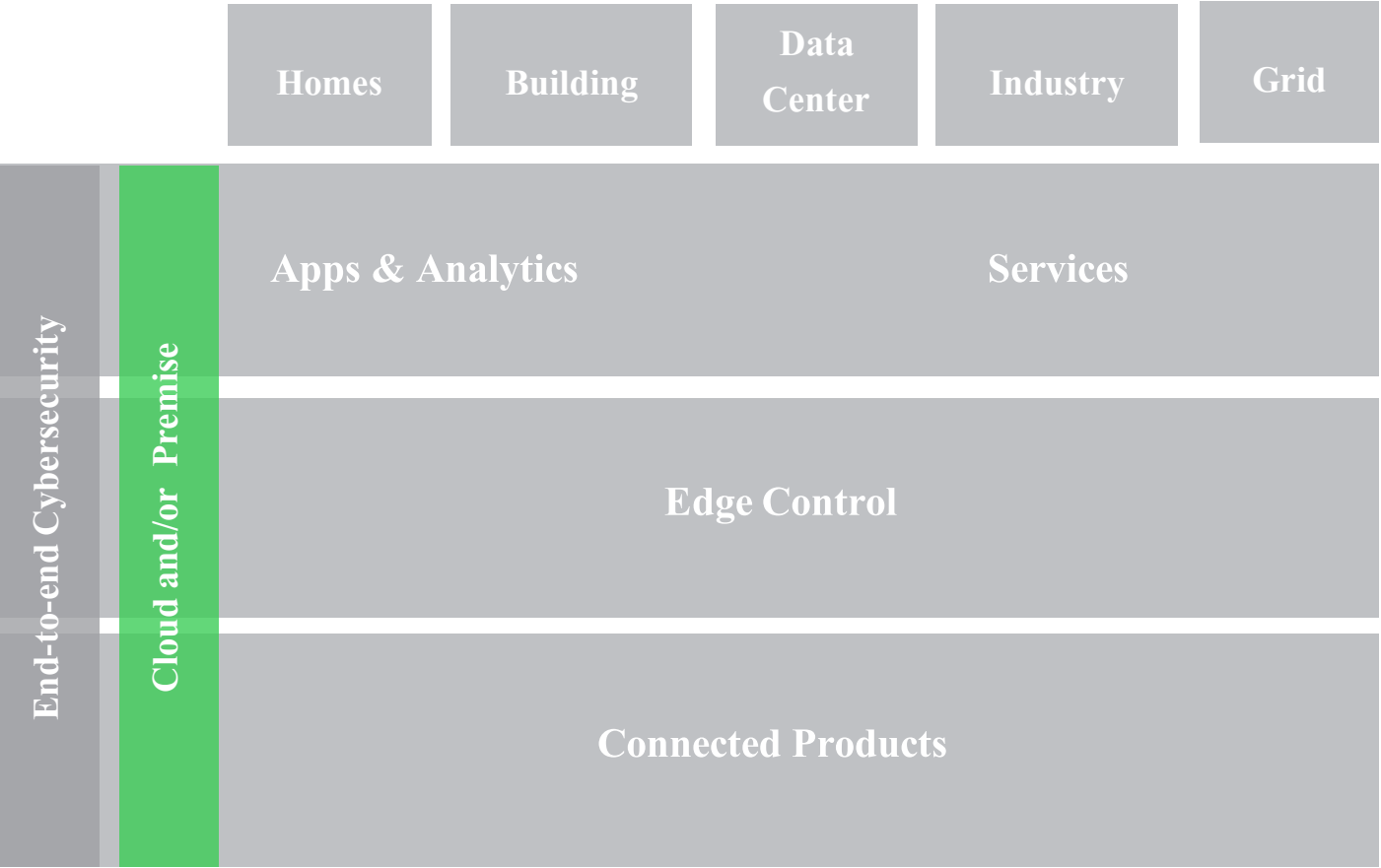


- Achieve Maximum Flexibility
- Extended Machine Availability
- Full Connectivity & Integration

Edge Control: constant on-premise reliability

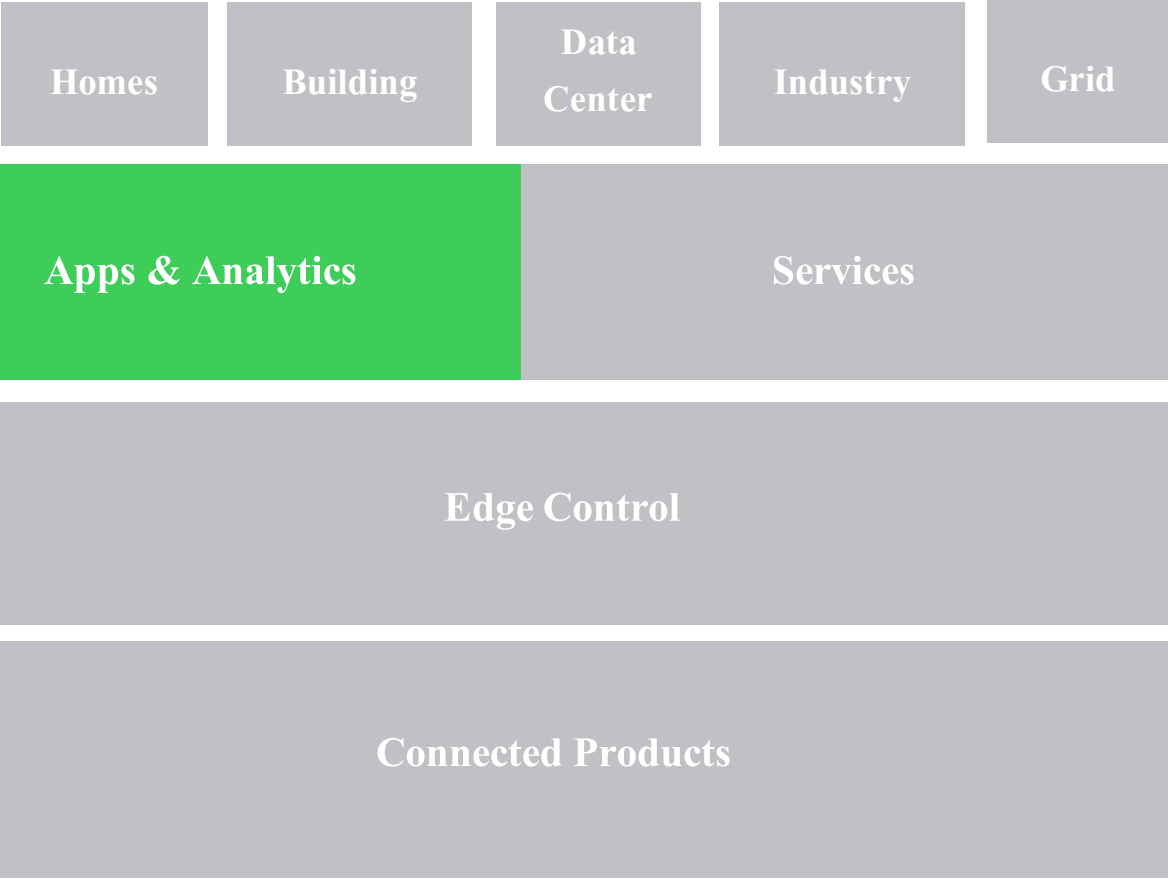


EcoStruxure Cloud: Enabling new apps and services



EcoStruxure™ Cloud

Apps & Analytics



Augmented Operator

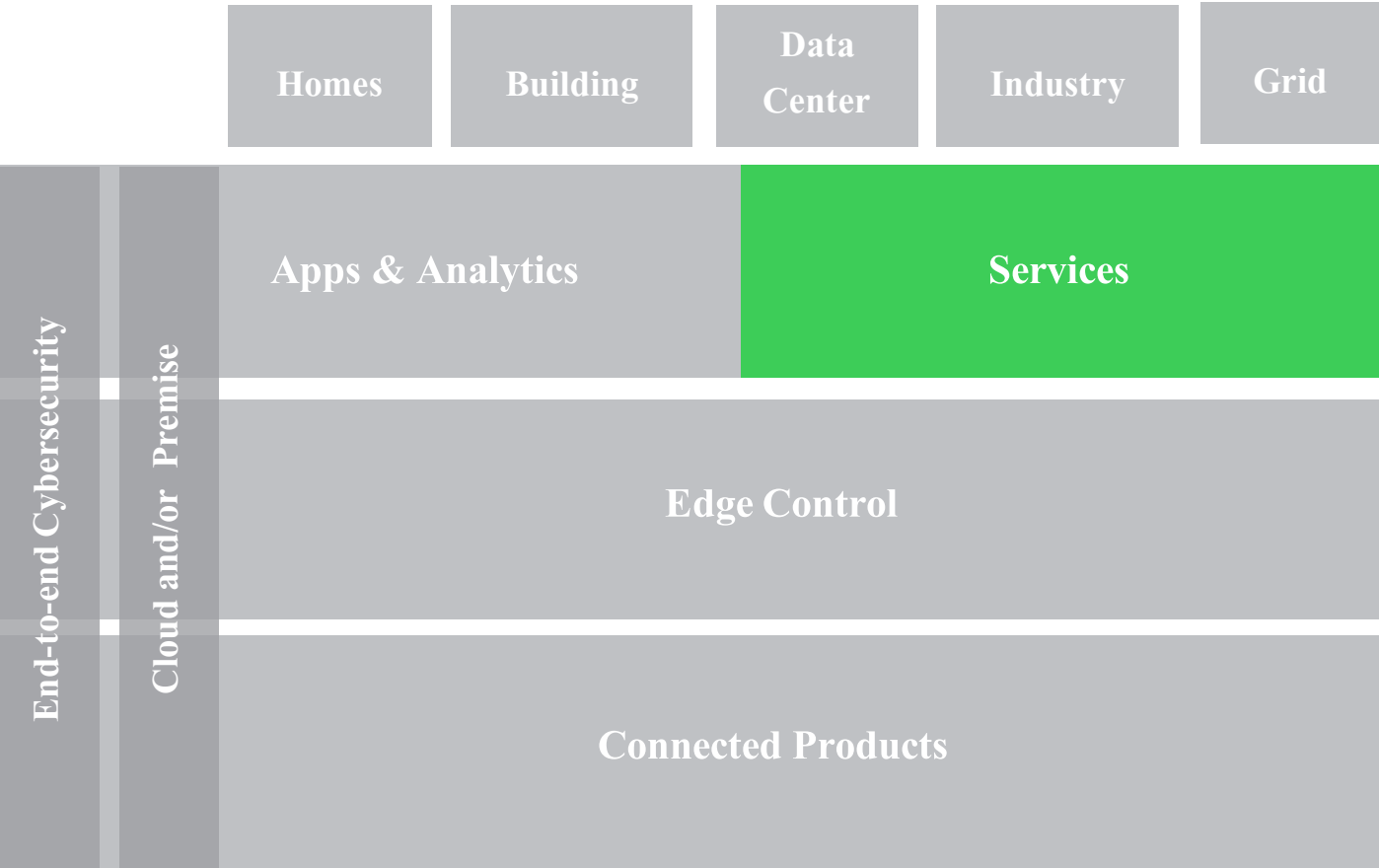
An intuitive User Interface for increased Efficiency, Error Free operations and Quicker Autonomy



Smart Glance



Services: The new frontier of value





**DO YOU
REMEMBER?**

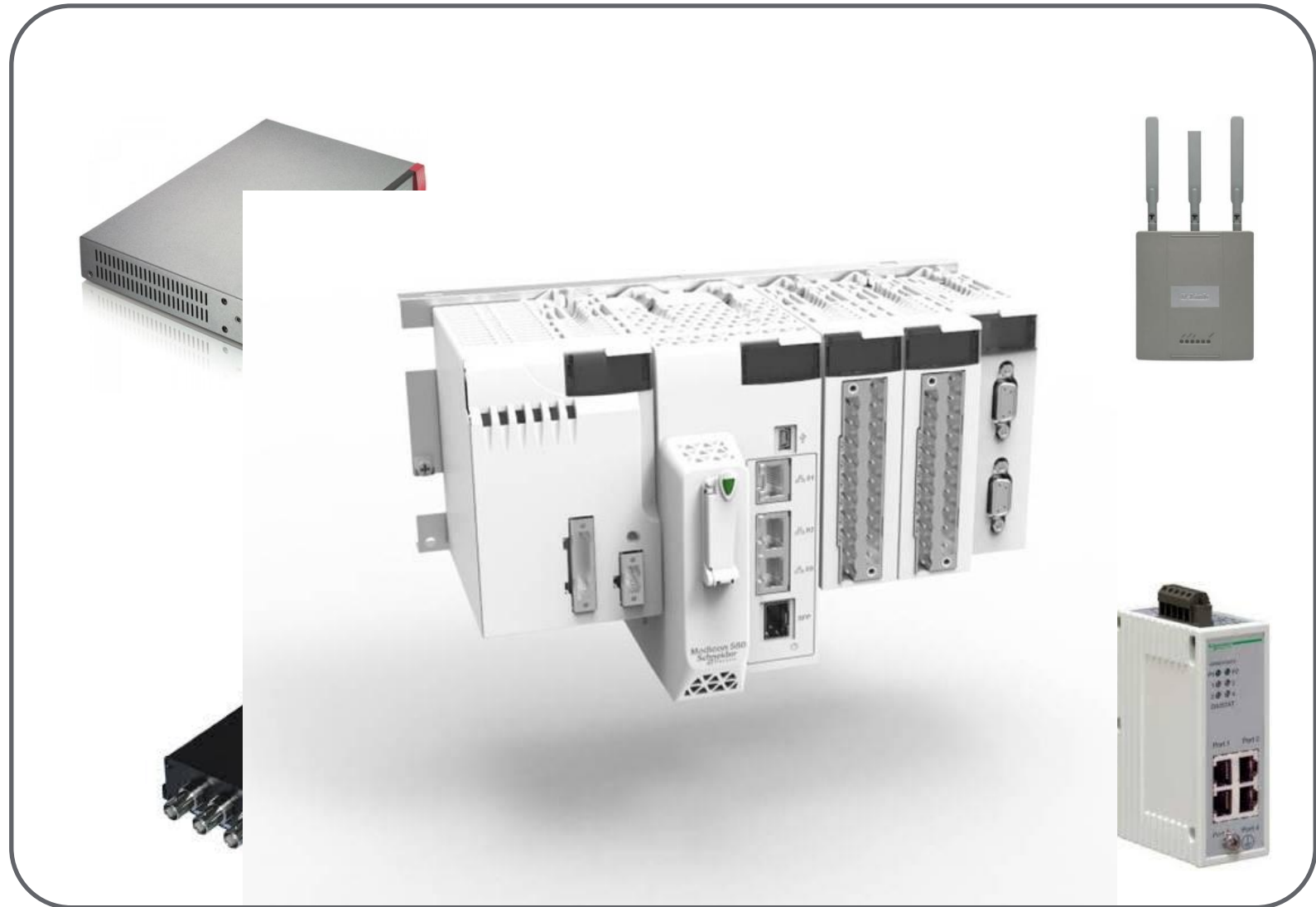
Do you remember...?

Now consider the
revolution
brought on by the
introduction of
the **Smart Phone**



Do you remember...?

And now
consider the new
era ushered in by
the M580 **ePAC!**



The Plant of the Future will excel in 3 areas

1

Asset Performance

- Cloud-based apps
- Wireless connectivity
- Low-power WAN
- Low-cost sensors



2

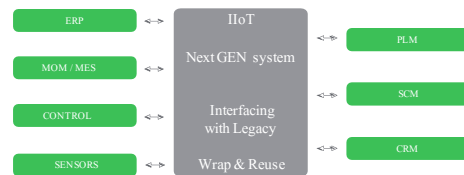
Augmented Operators



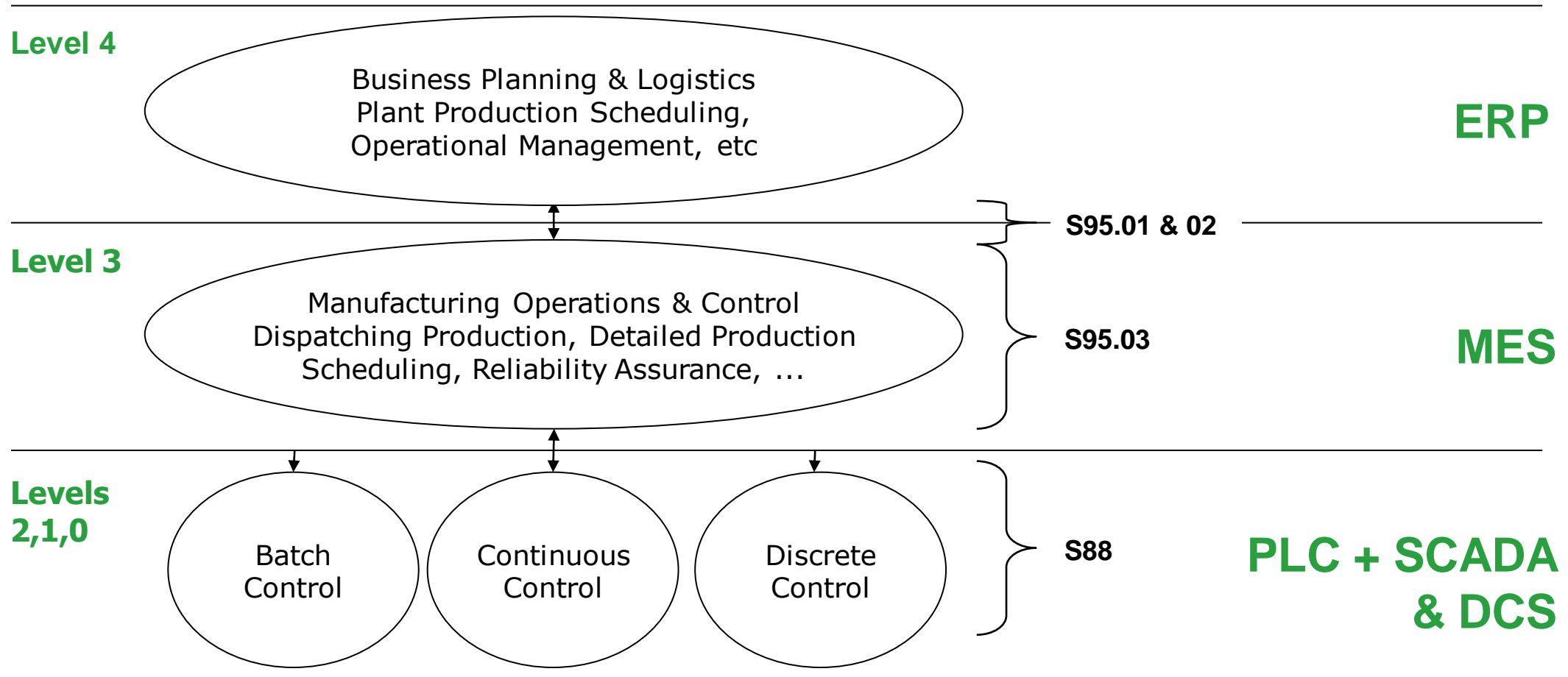
SmartGlance

3

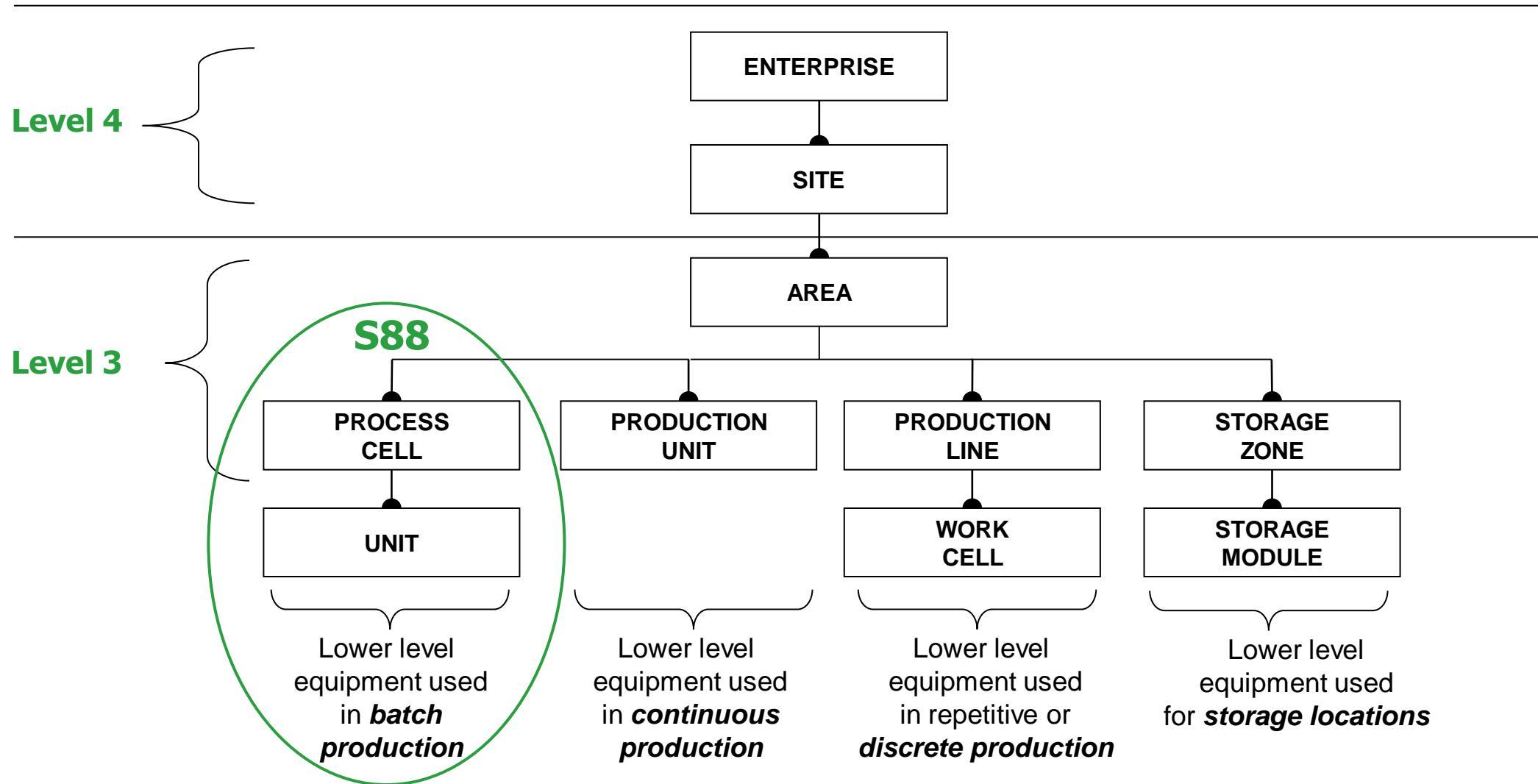
Smart Enterprise Control



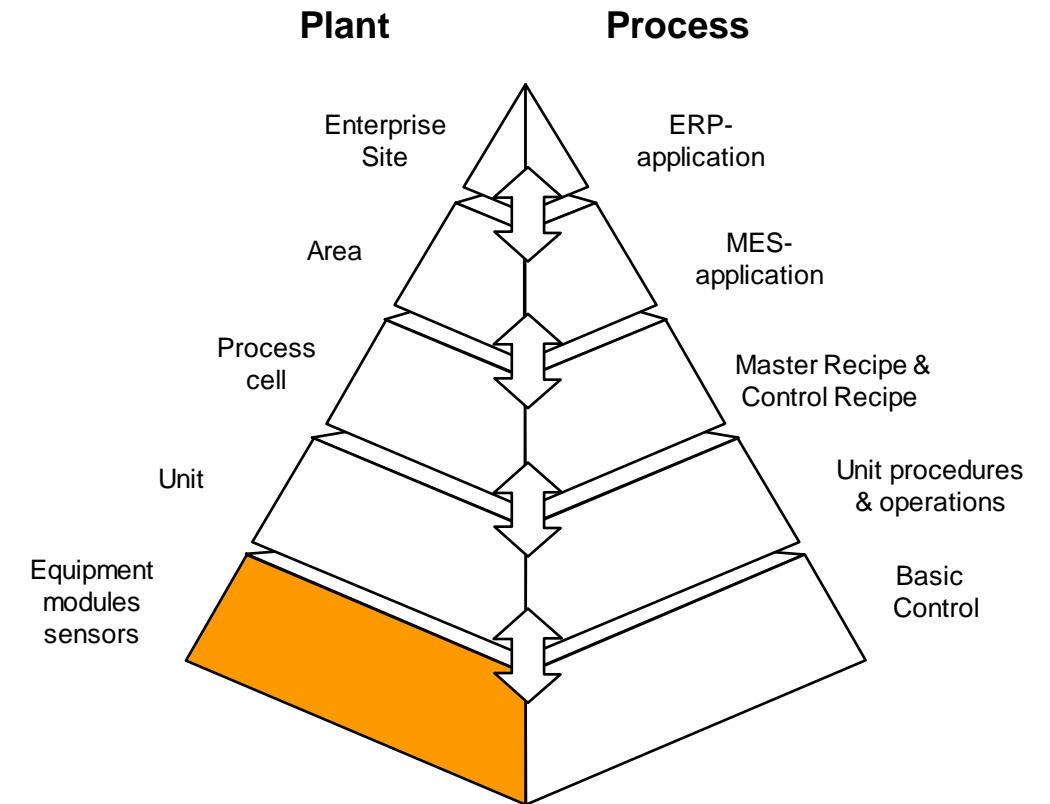
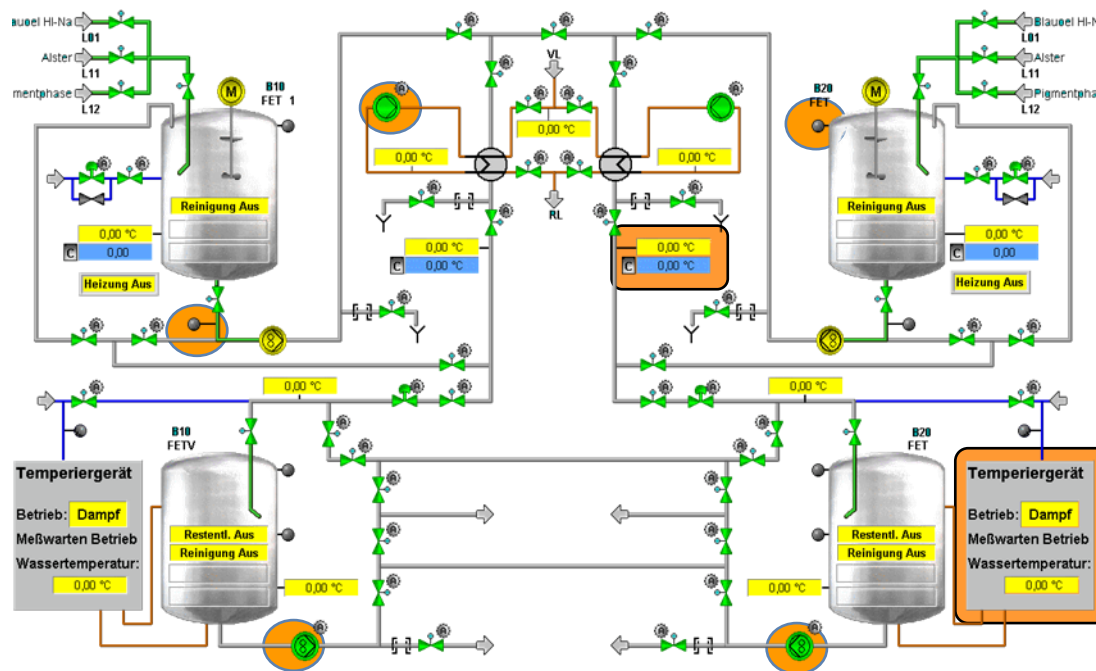
Use the ISA95 structure / Hierarchical Activity Model



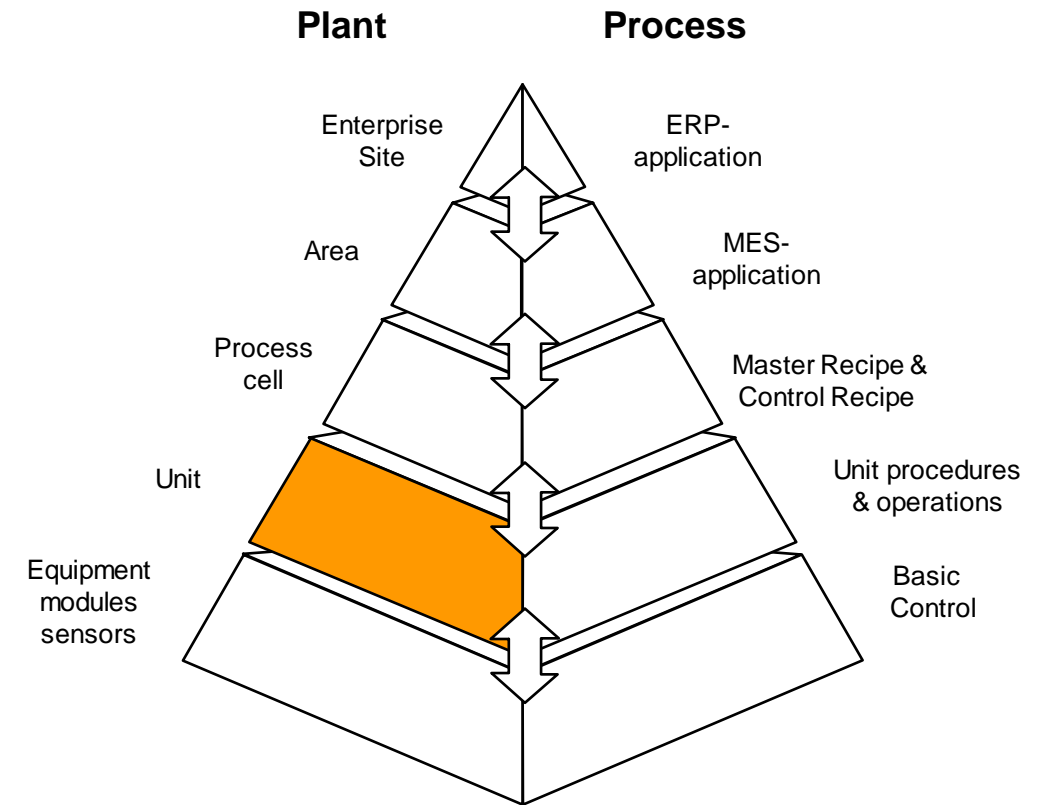
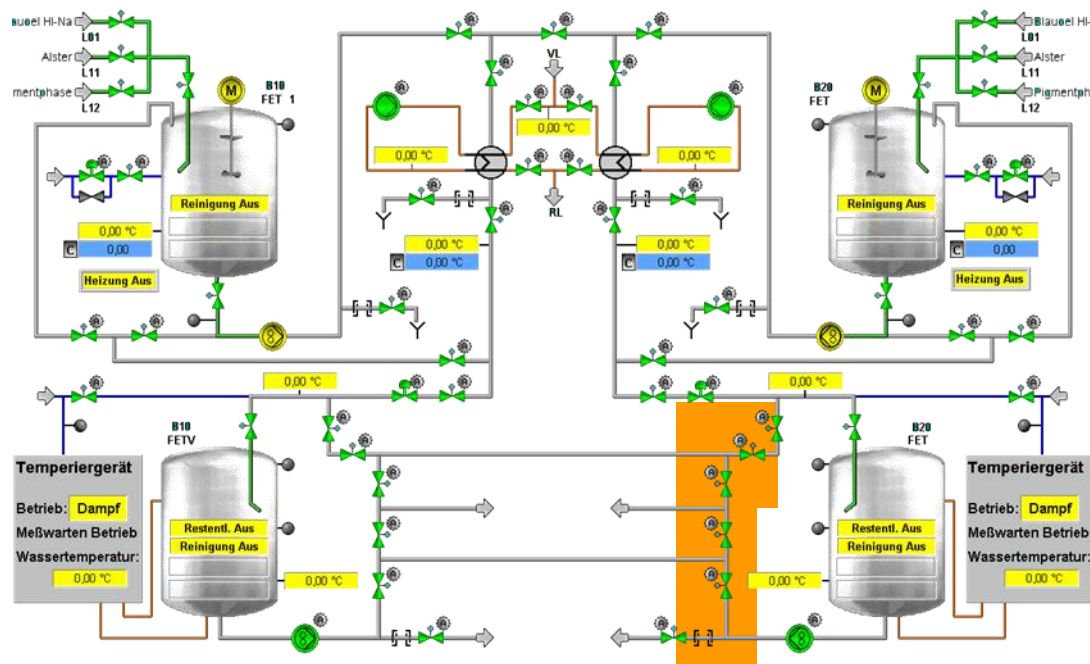
Use the ISA95 structure / Hierarchical Equipment Model



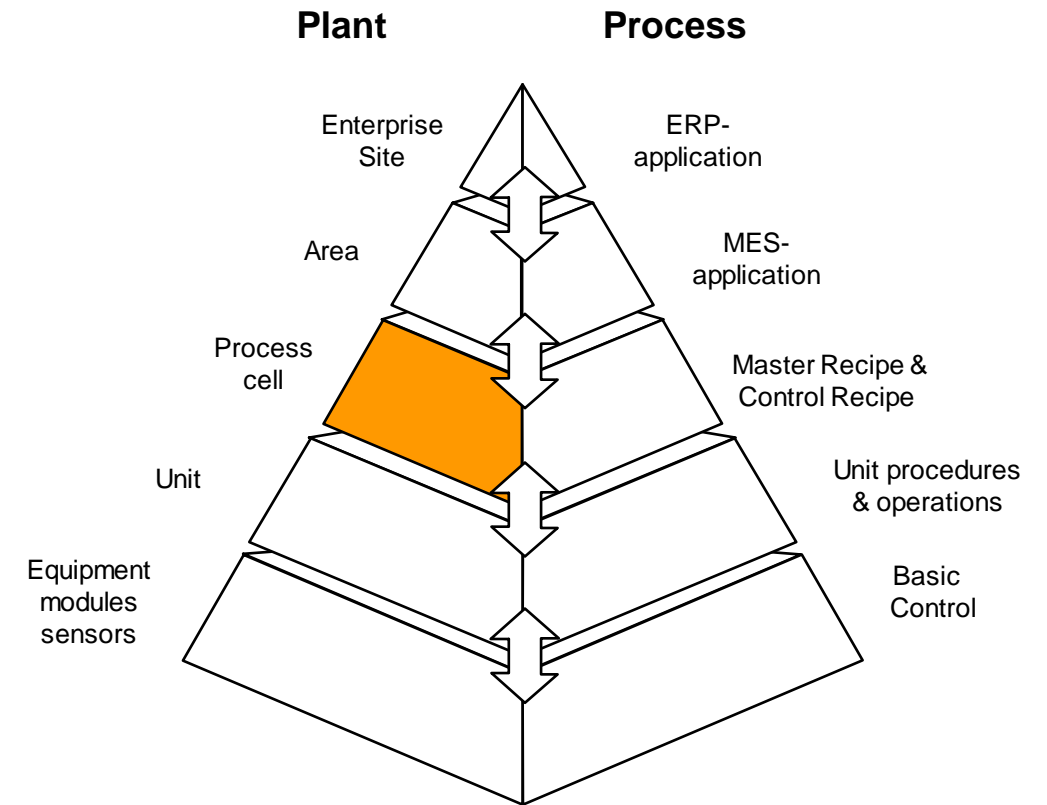
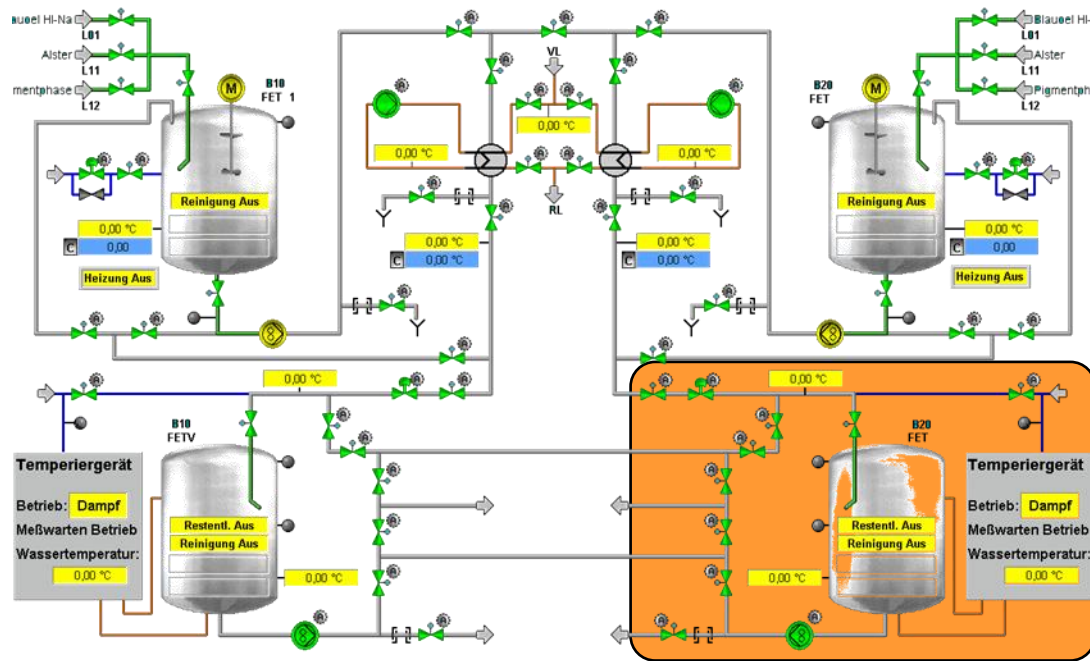
Use the S88 structure for FLEXIBLE Batch Processing



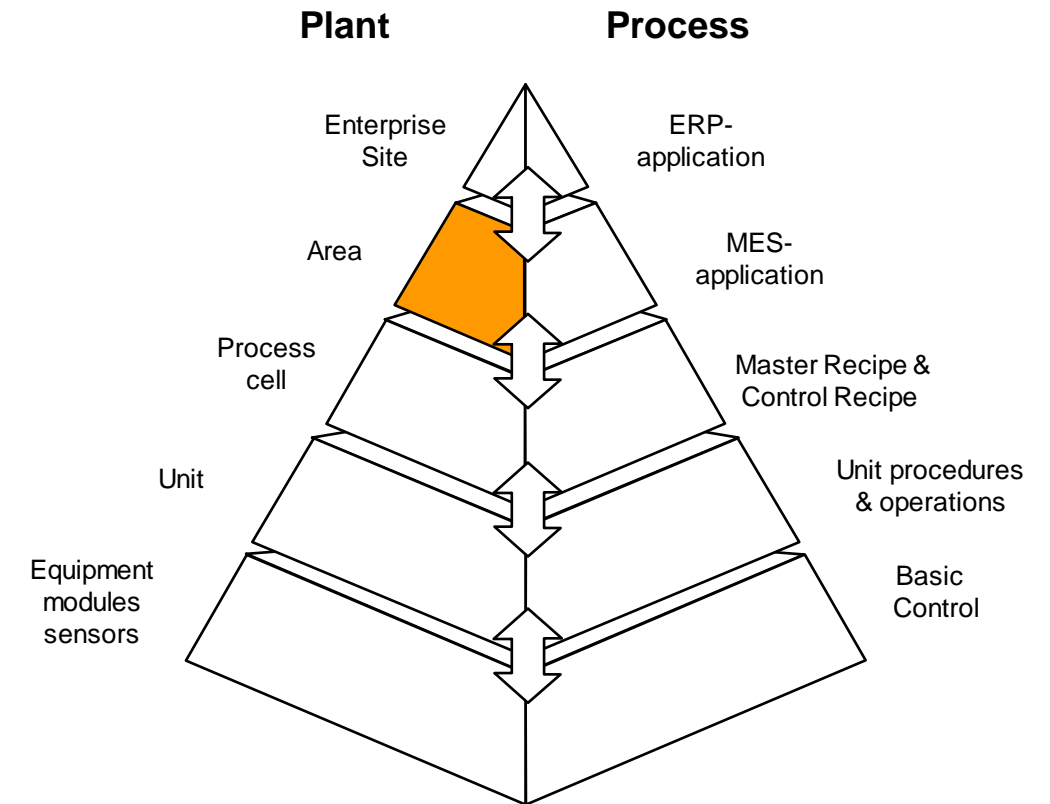
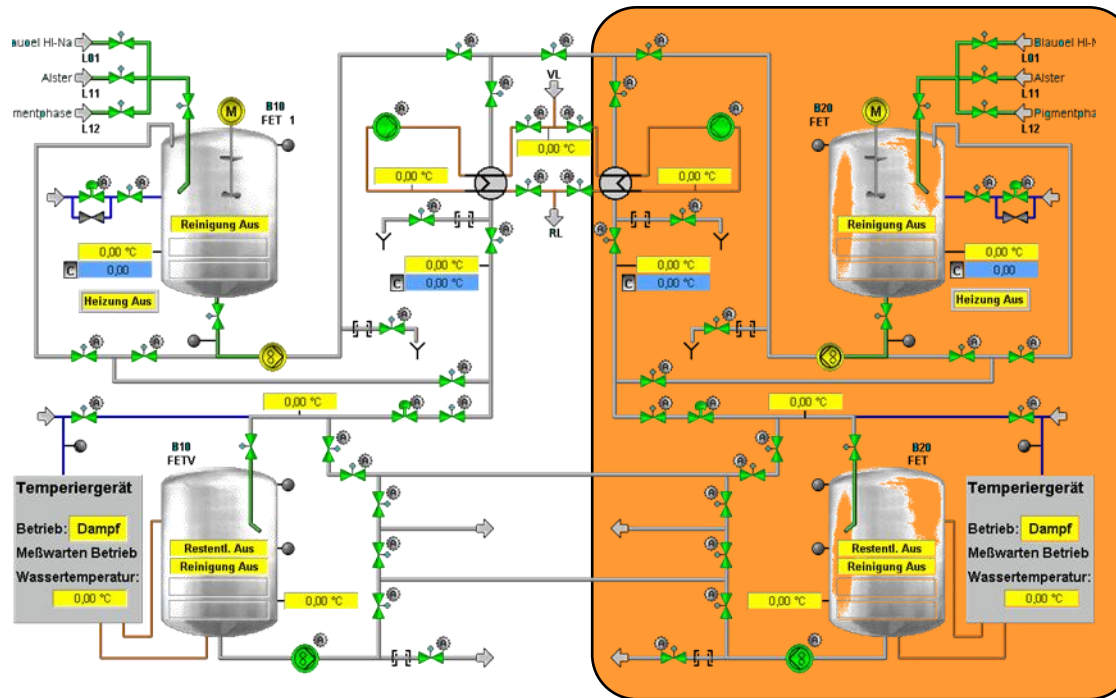
Use the S88 structure for FLEXIBLE Batch Processing



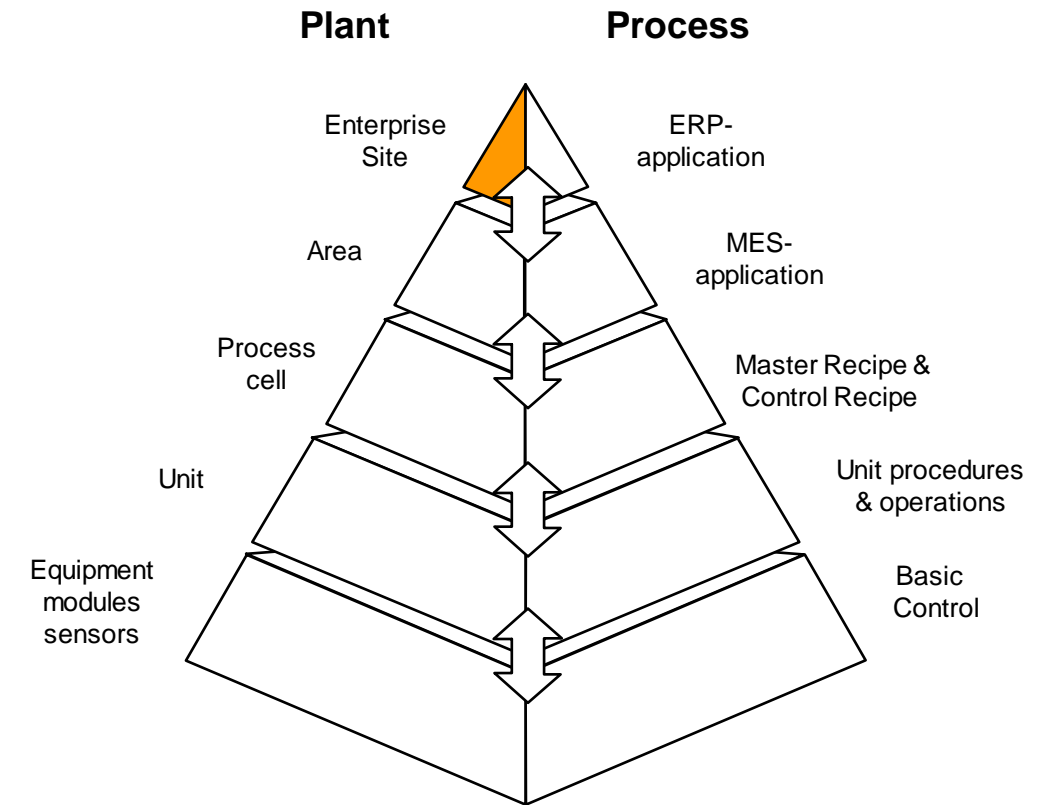
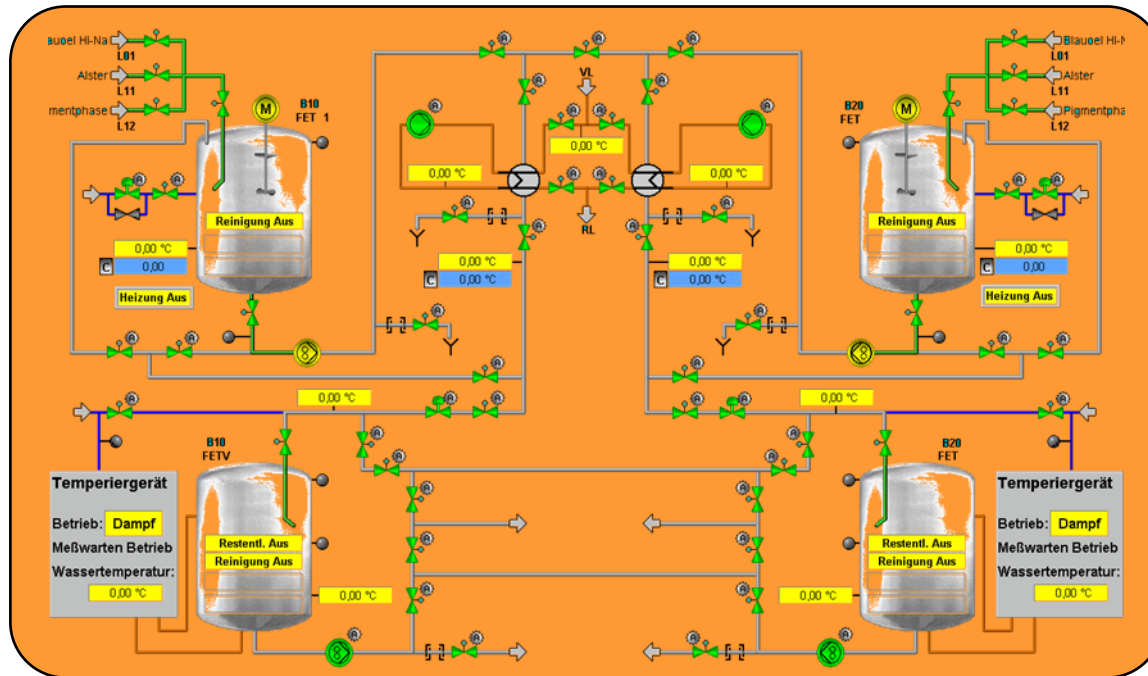
Use the S88 structure for FLEXIBLE Batch Processing



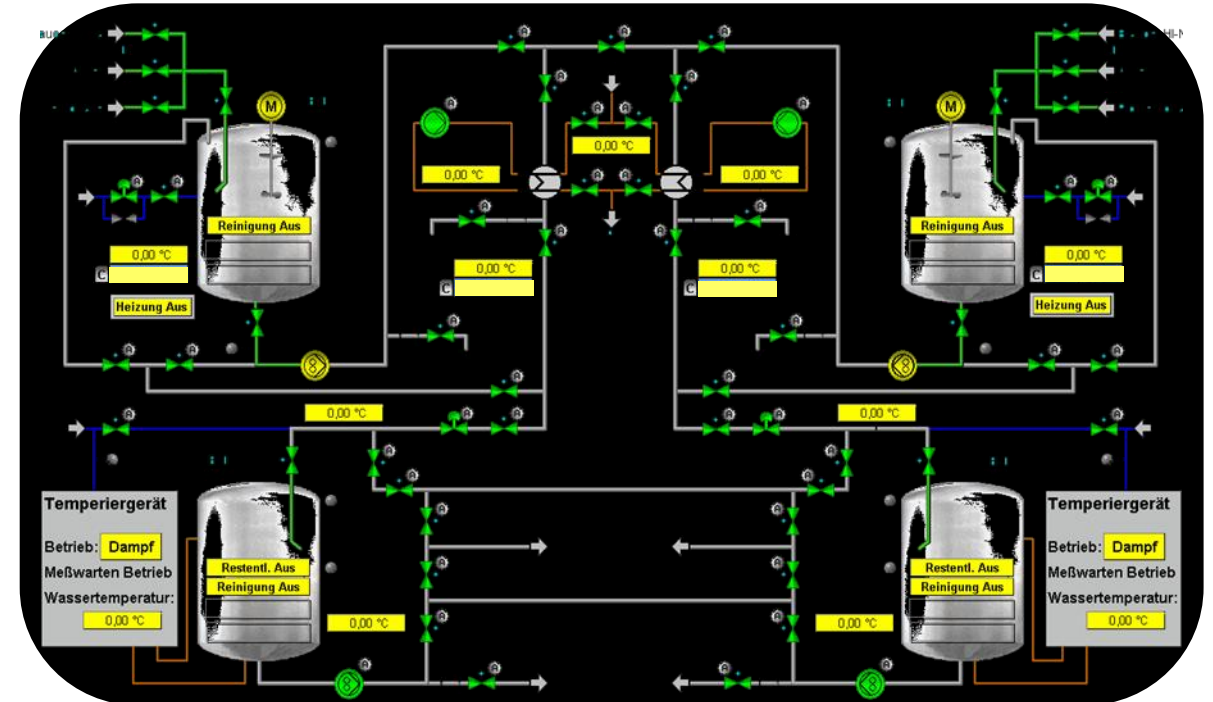
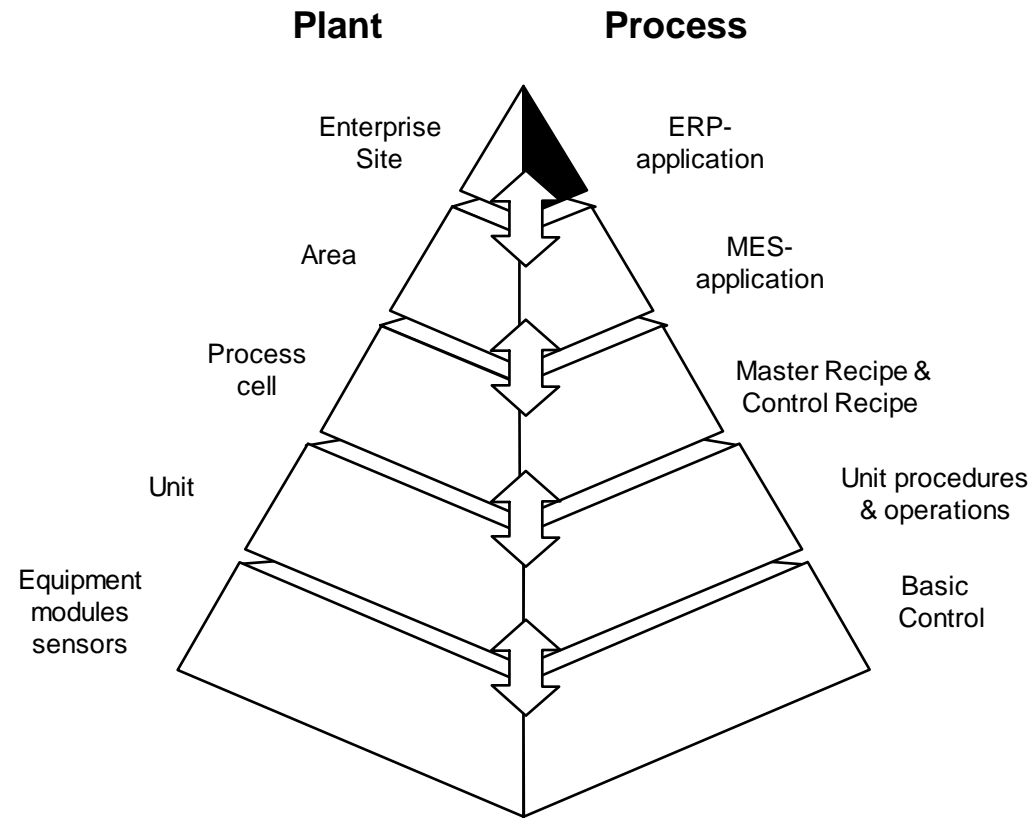
Use the S88 structure for FLEXIBLE Batch Processing



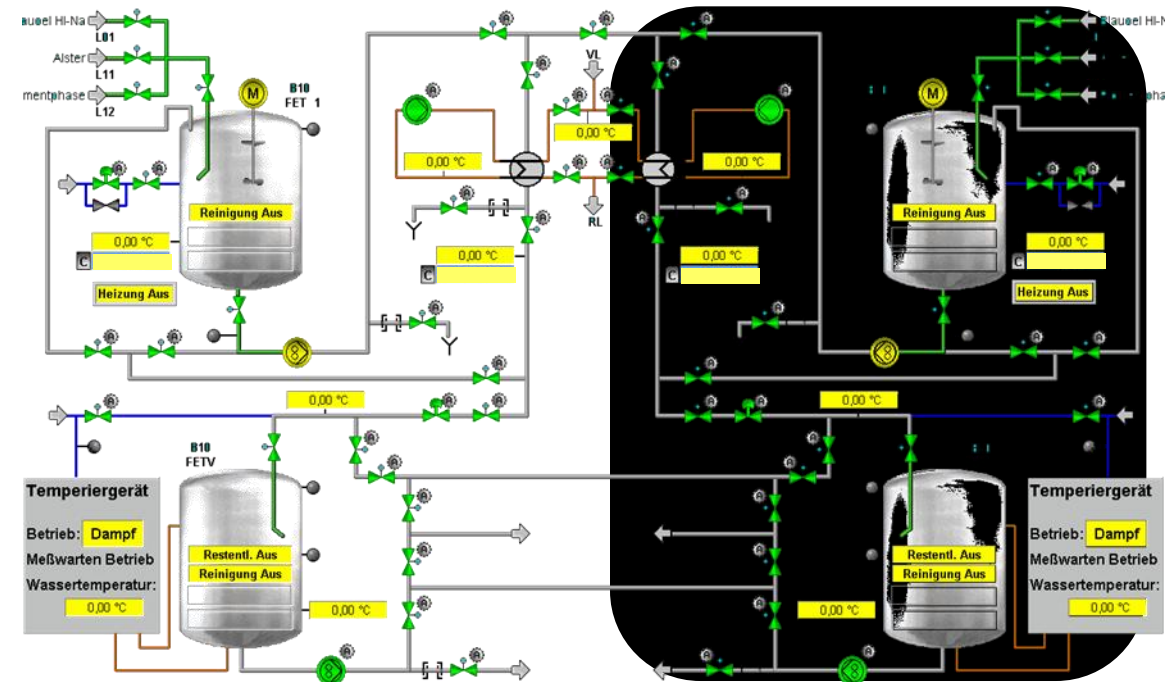
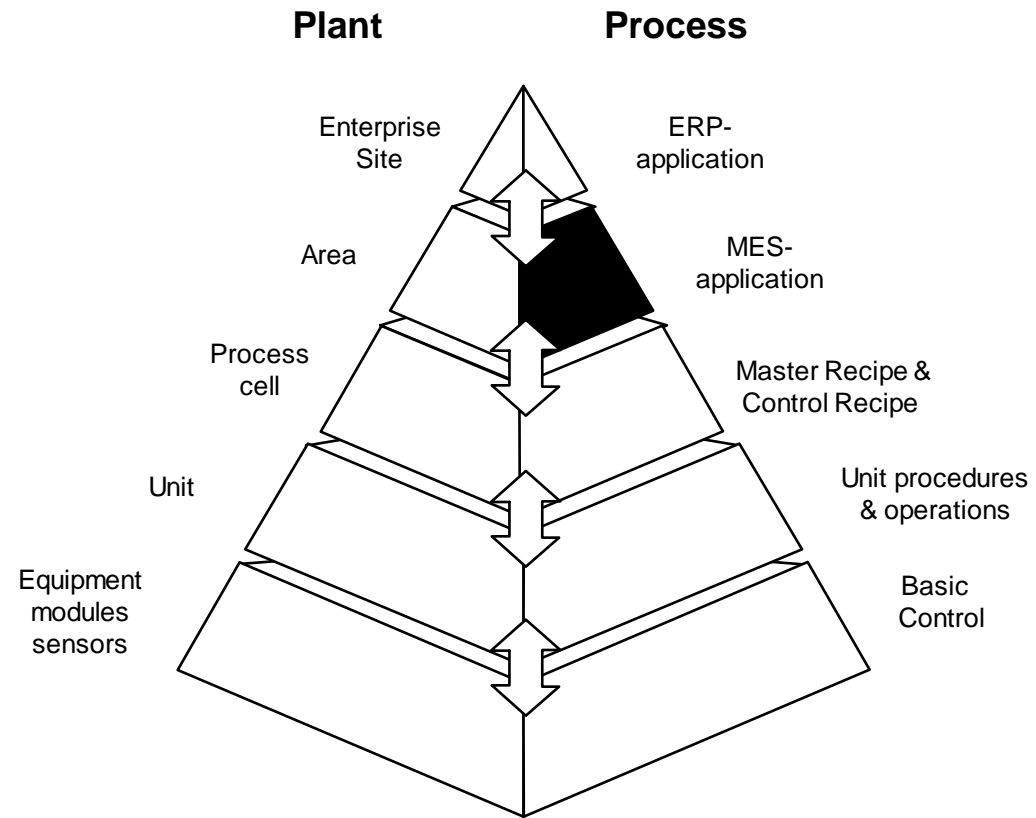
Use the S88 structure for FLEXIBLE Batch Processing



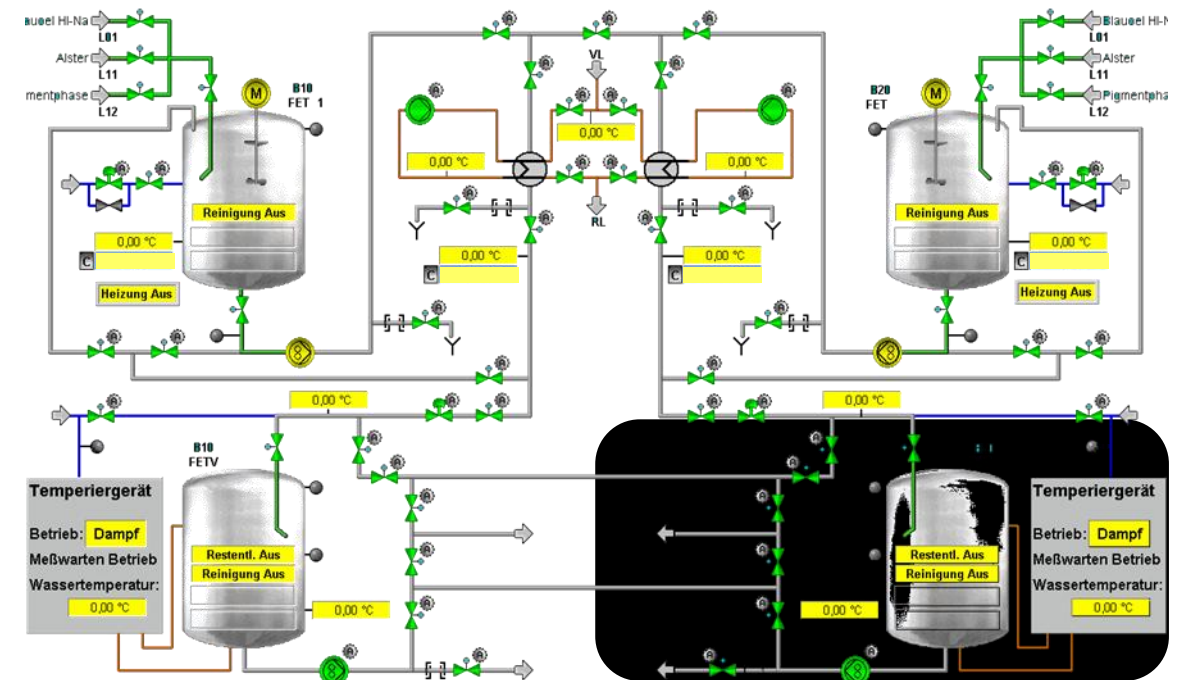
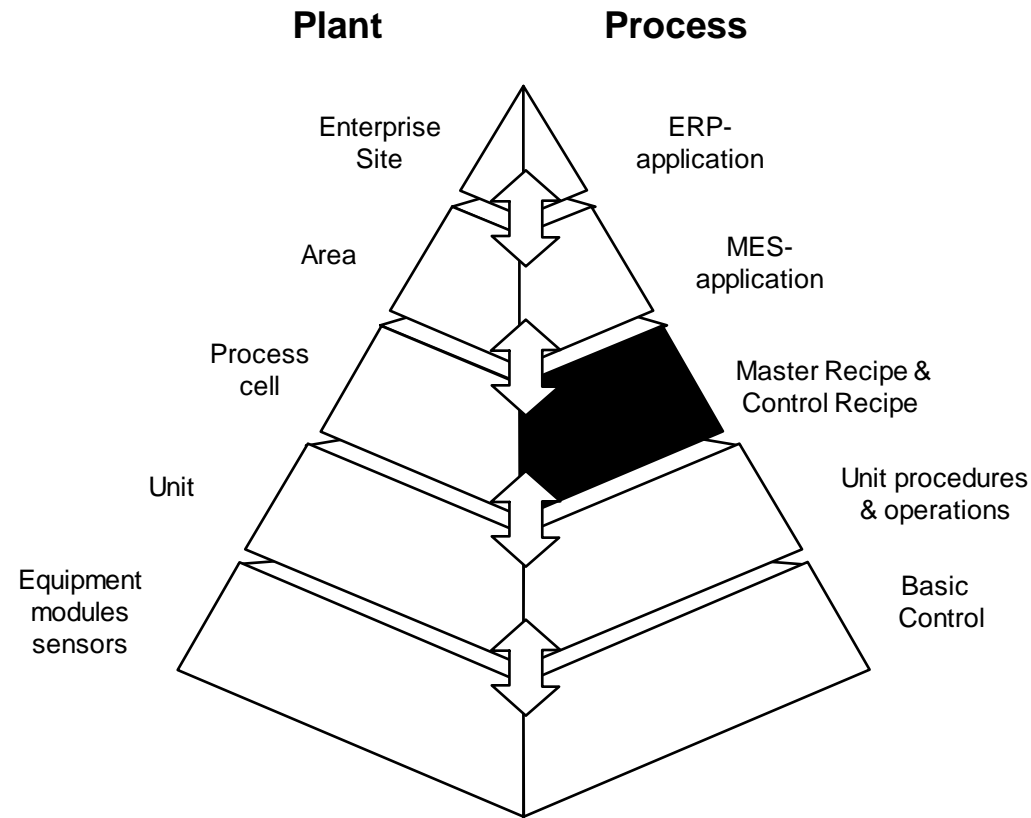
Use the S88 structure for FLEXIBLE Batch Processing



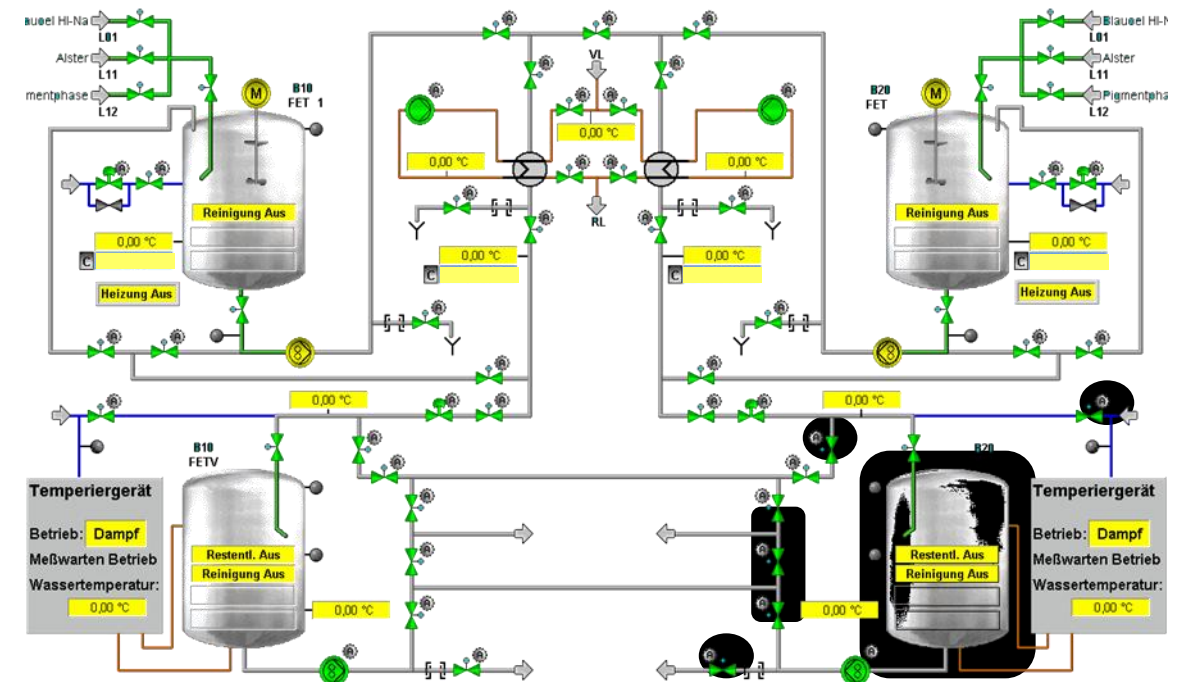
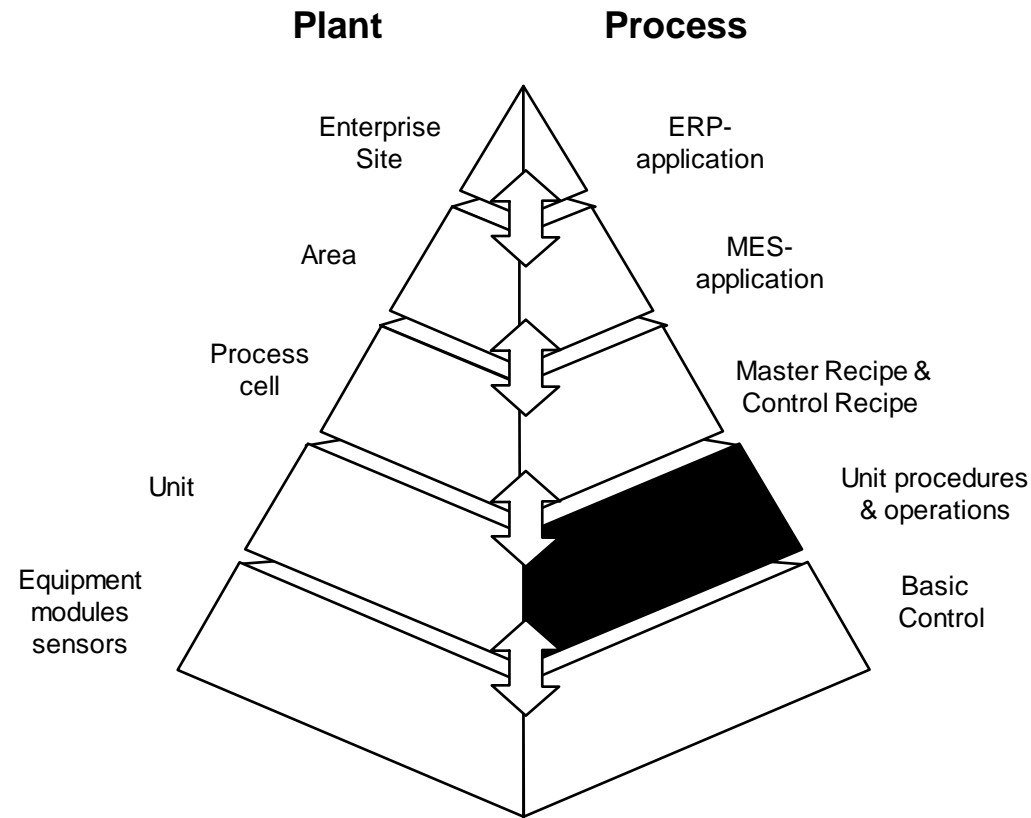
Use the S88 structure for FLEXIBLE Batch Processing



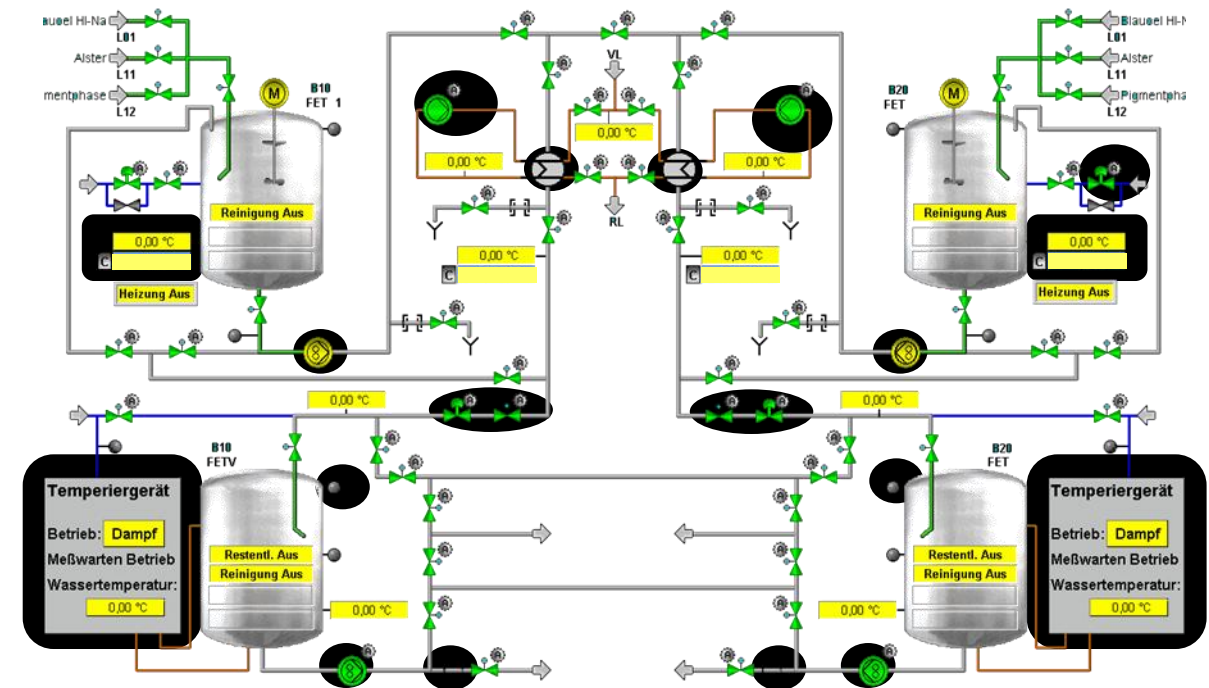
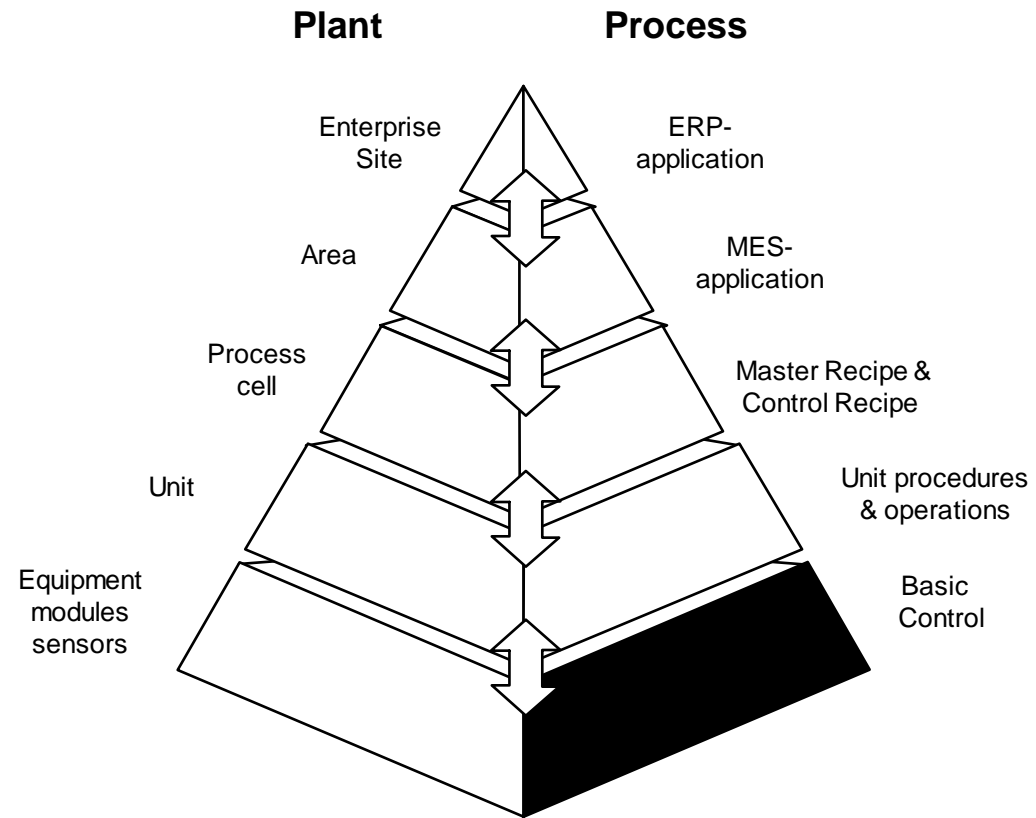
Use the S88 structure for FLEXIBLE Batch Processing



Use the S88 structure for FLEXIBLE Batch Processing



Use the S88 structure for FLEXIBLE Batch Processing

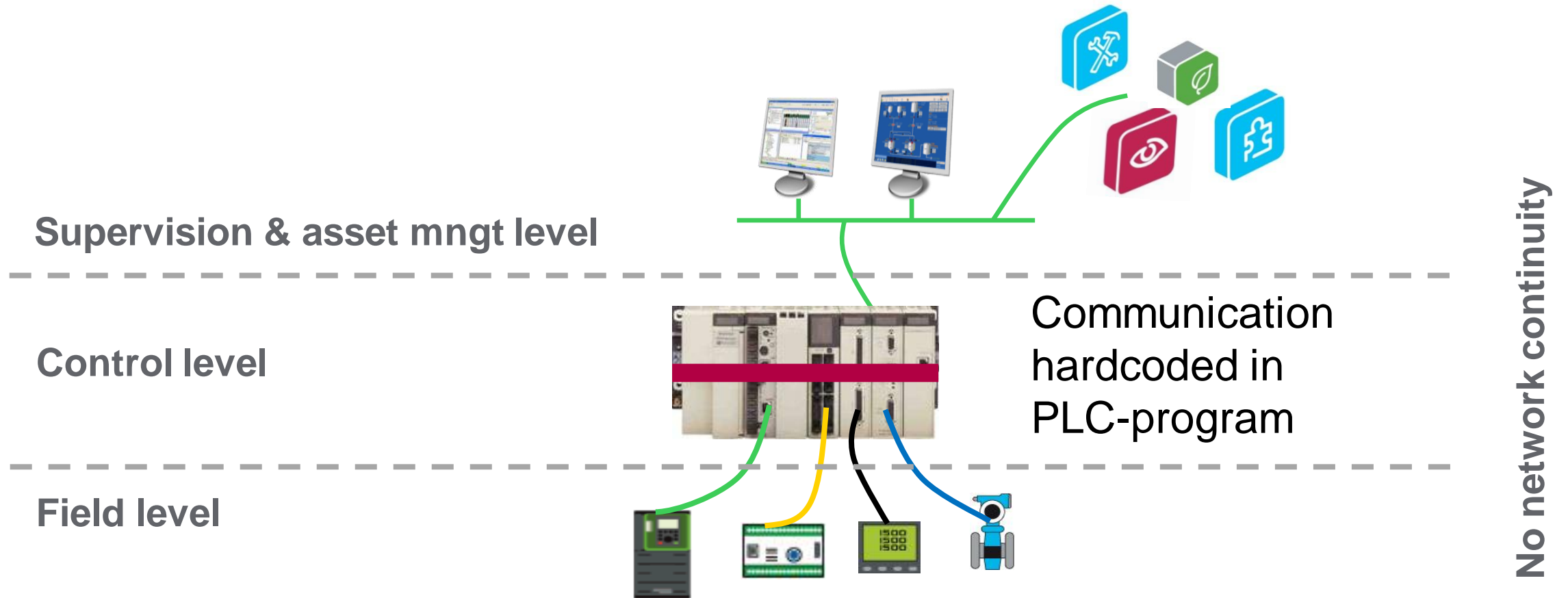




Fully **transparent & open** architecture

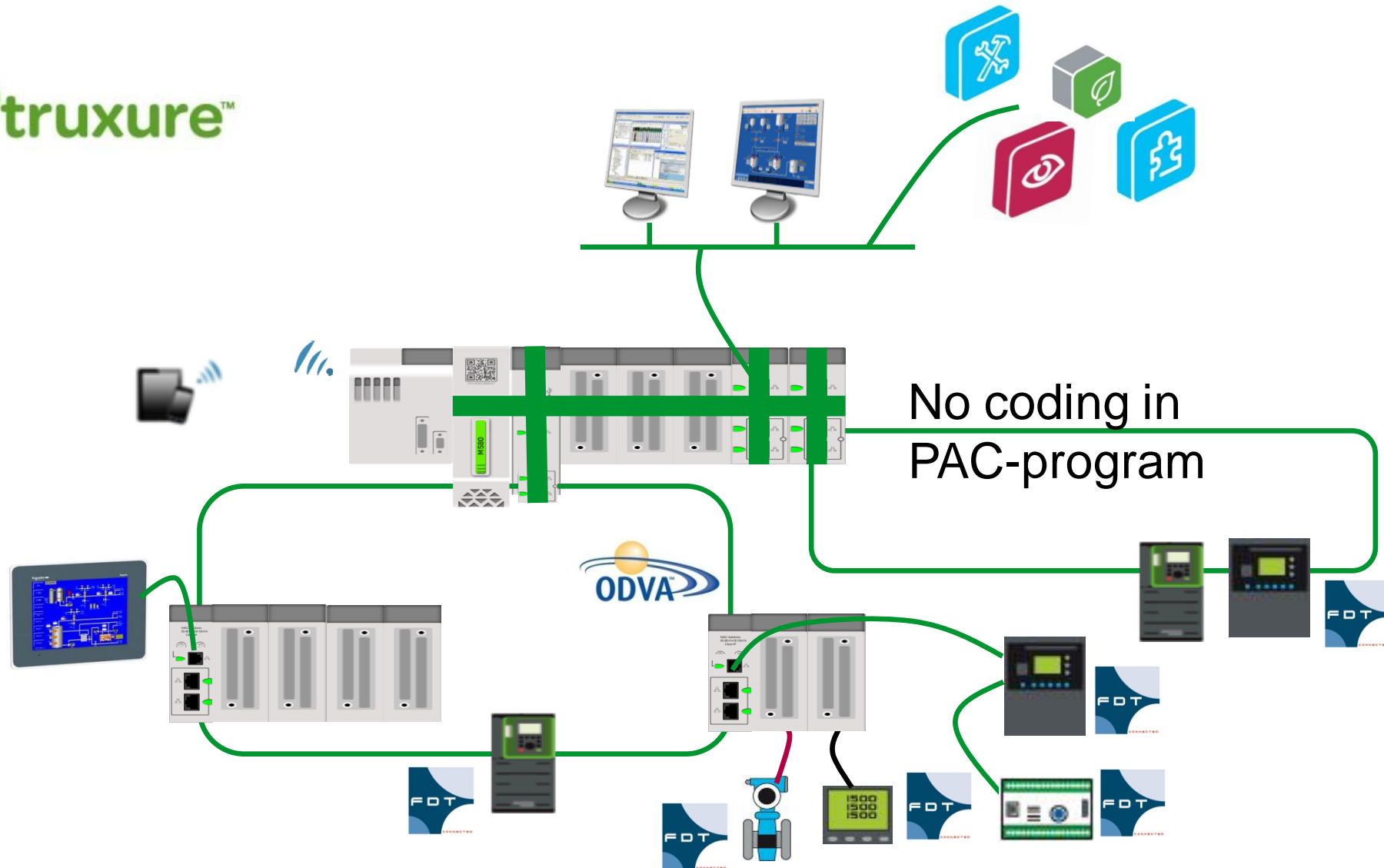
Now we provide a totally transparent and open architecture **from bottom to top**. since Ethernet communication is also integrated as the **backbone** of the **M580 system bus**.

From slow Data Processing via heterogeneous networks...



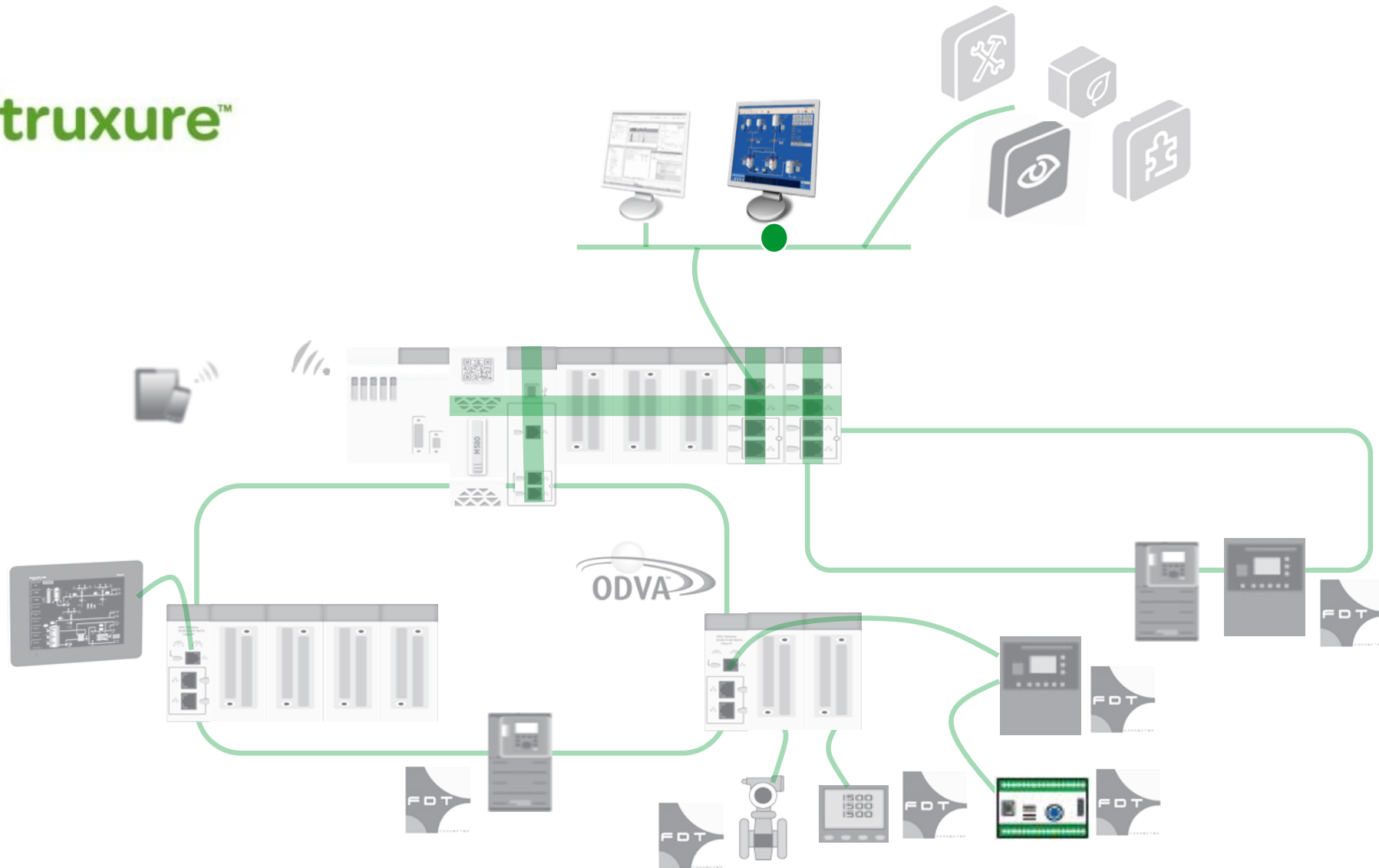
...to very FAST Data Processing via a single Ethernet backbone

Plant  truxure™



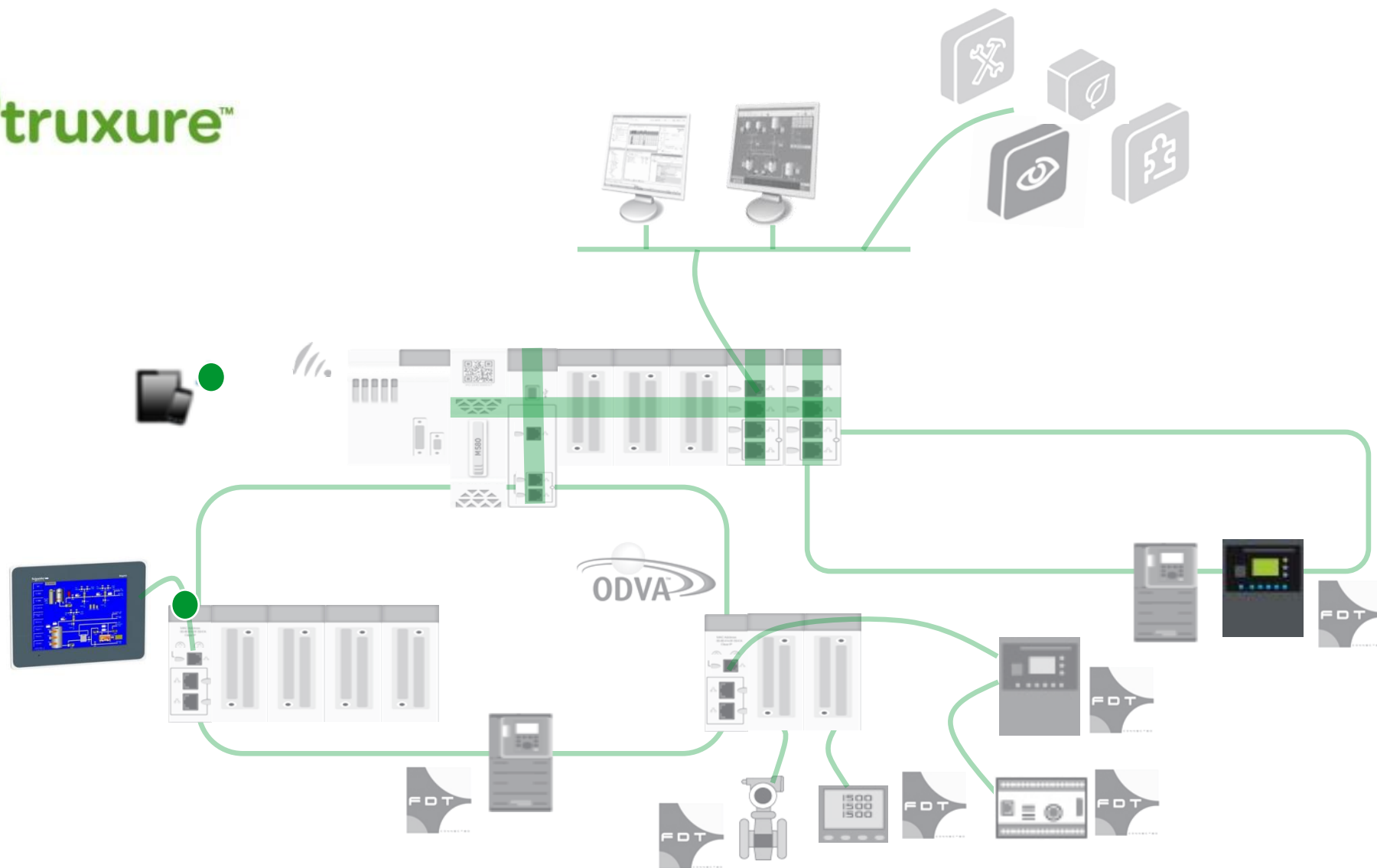
Bottom-to-top FLEXIBLE & TRANSPARANT Data Processing

Plant  truxure™



The right data at the right time in the right location

Plant  truxure™

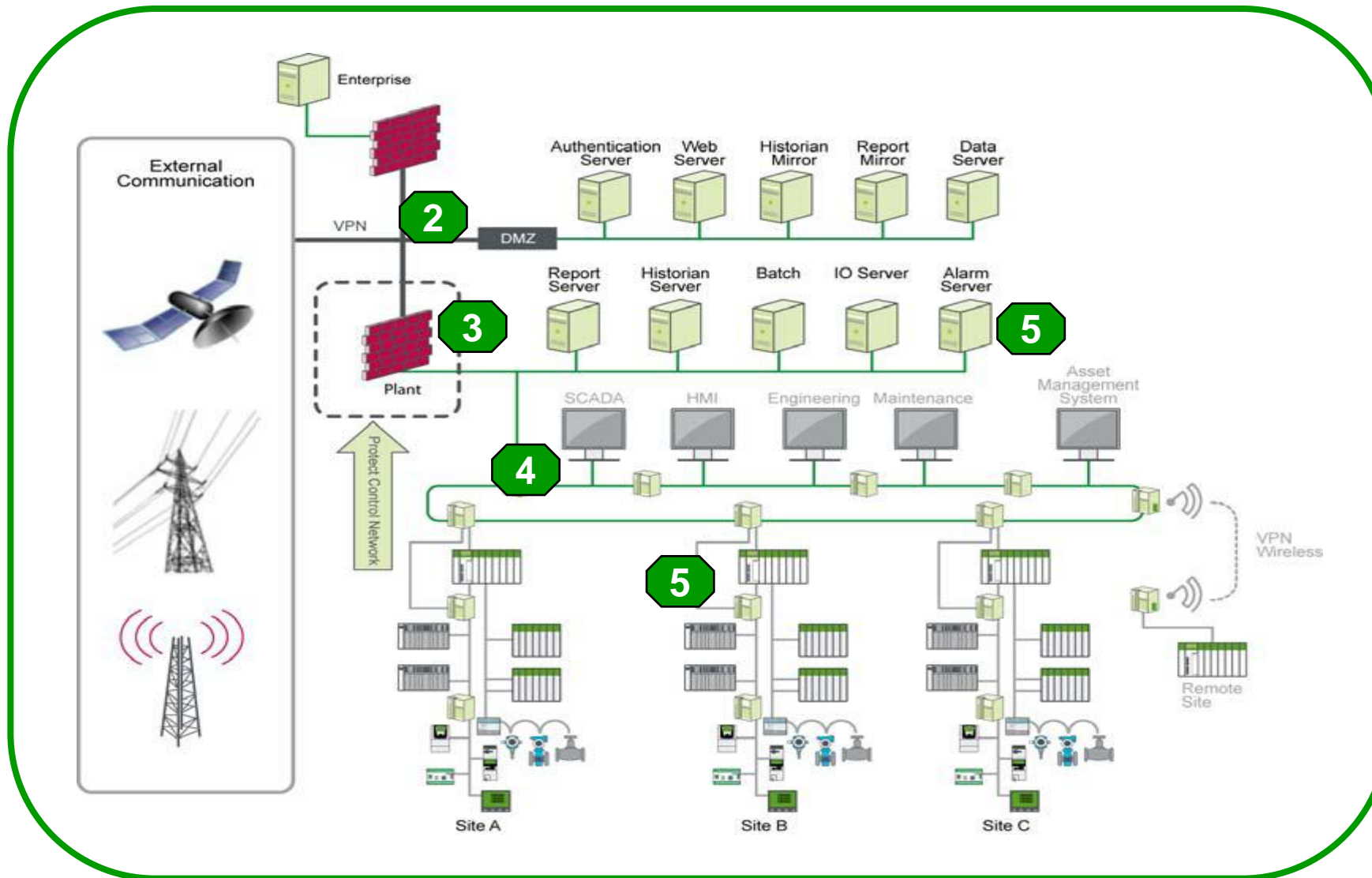




Smart Data & Cyber Security

Smart Data, direct from the source requires strong functionality in **Cyber Security**. Doing this both on system level as well as on product level

Defense-in-Depth Approach

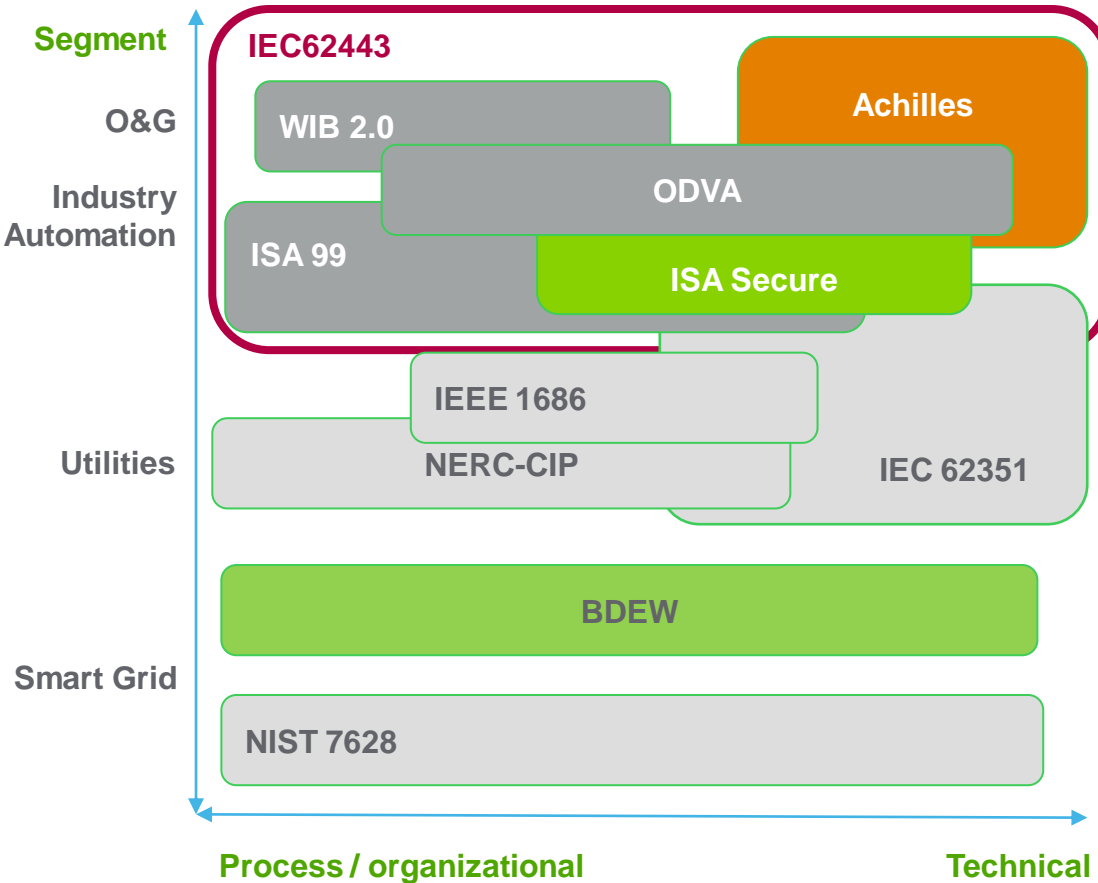


6 key steps:

1. Security Plan
2. Network Separation
3. Perimeter Protection
4. Network Segmentation
5. Device Hardening
6. Monitoring & Update

Cybersecurity Ready

voldoet aan cybersecurity standaarden



Geïntegreerde Security functies zoals gedefinieerd door de standaarden:

IEC62443

- Evolutie van ISA99. Dekt apparaten systemen en gebruik van systemen af

Achilles Level 2

- Gedetailleerde inspectie van TCP/IP verkeer
- Omvat Ethernet, ARP, IP, ICMP, TCP en UDP
- Toont de robuustheid aan tegen een gedefinieerde set van testen





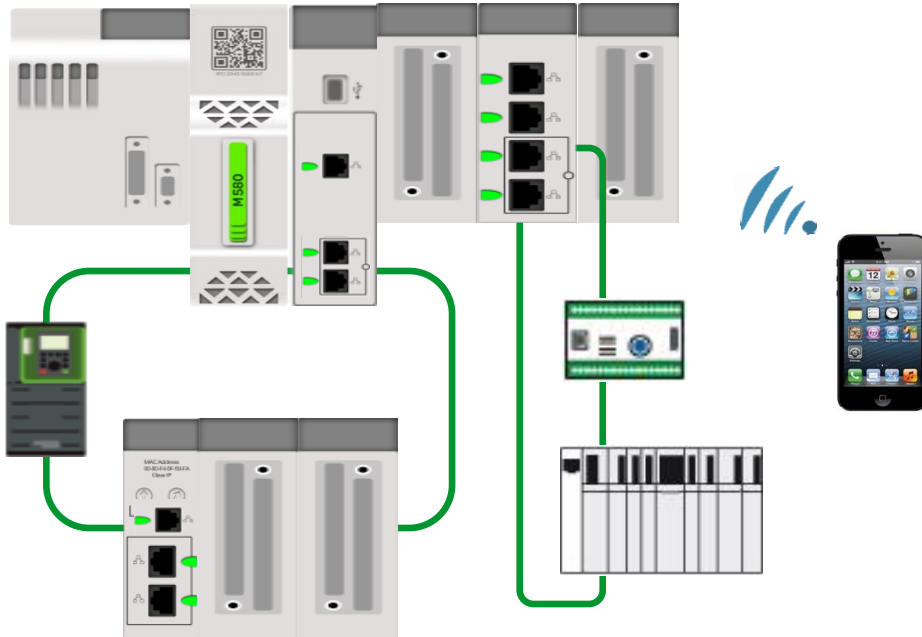
Integrated architecture

Simplify cabling, power supply, configuration, troubleshooting, to a cost effective architecture, with reduced footprint



Integrated modules: Switches , WiFi access point, optical fiber converter, serial, AS-i, CANopen*, and Profibus* gateways, routers*...

Discover what an Agile PAC means



Flexible in Design & Architecture

- Ethernet integrated in the controller
- Simple integration of core devices (FDT/DTM)
- Flexible & scalable topologies

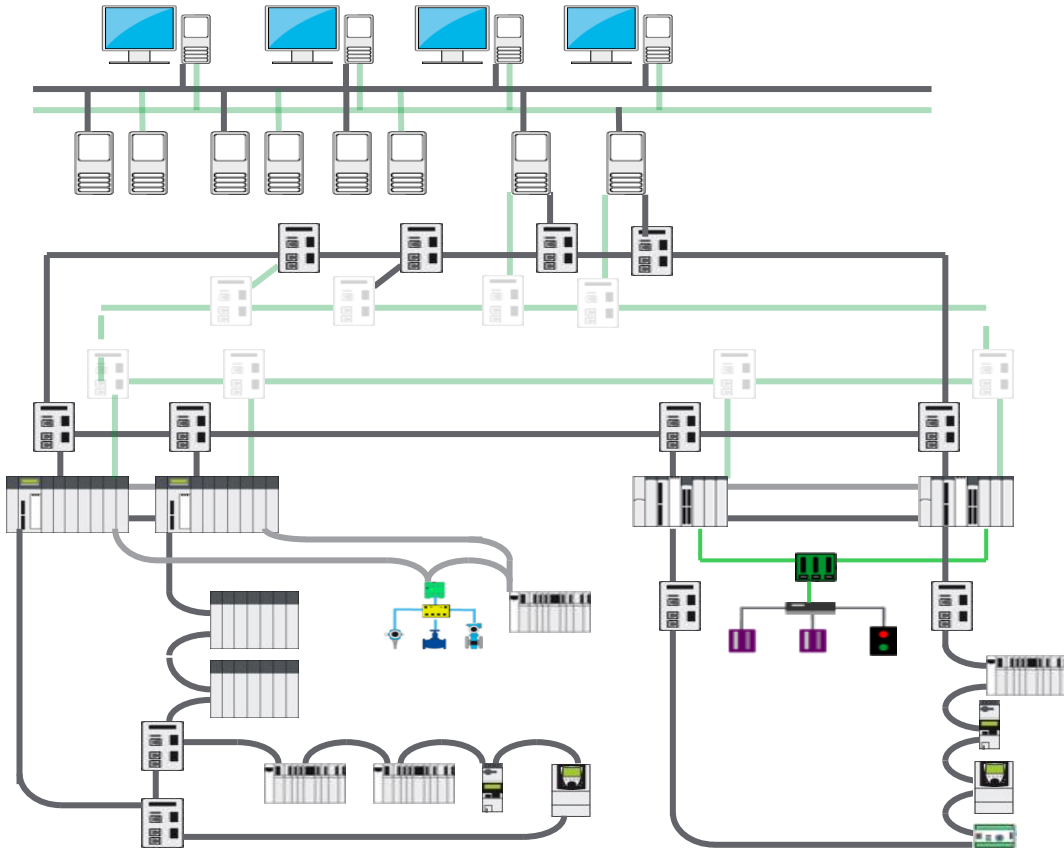
Flexible in Operations

- Change Configuration On The Fly (CCOTF)
- System Time Stamping (no programming)

Flexible in Maintenance

- Full system diagnostic from your smart phone

High Availability



Plant  truxure™
99.9996% availability

CCOTF = Change Configuration On the Fly

No stoppage of the proces when:

- An I/O drop is added to the system
- An I/O module is added and configured
- An I/O channel is configured

Automatic update of all variables
from PAC to SCADA via Speedlink Dynamic.

Hot swap for all X80 modules.

The Plant of the Future will excel in 3 areas

1

Asset Performance

- Cloud-based apps
- Wireless connectivity
- Low-power WAN
- Low-cost sensors



2

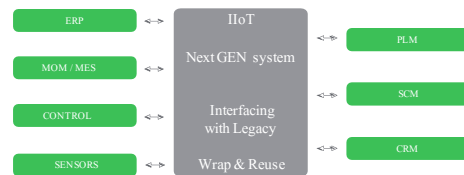
Augmented Operators



SmartGlance

3

Smart Enterprise Control



Bezoek onze stand om dieper op de materie in te gaan

Life Is On



16 maart 2017 ••• Hart van Holland Nijkerk

Industrial Ethernet

Life Is On

