

A man with glasses on his head, wearing a light-colored shirt, is smiling and looking at a laptop screen in an office environment. The background is blurred, showing office furniture and a window.

# Verticale integratie eenvoudiger dan ooit

2016, March 15

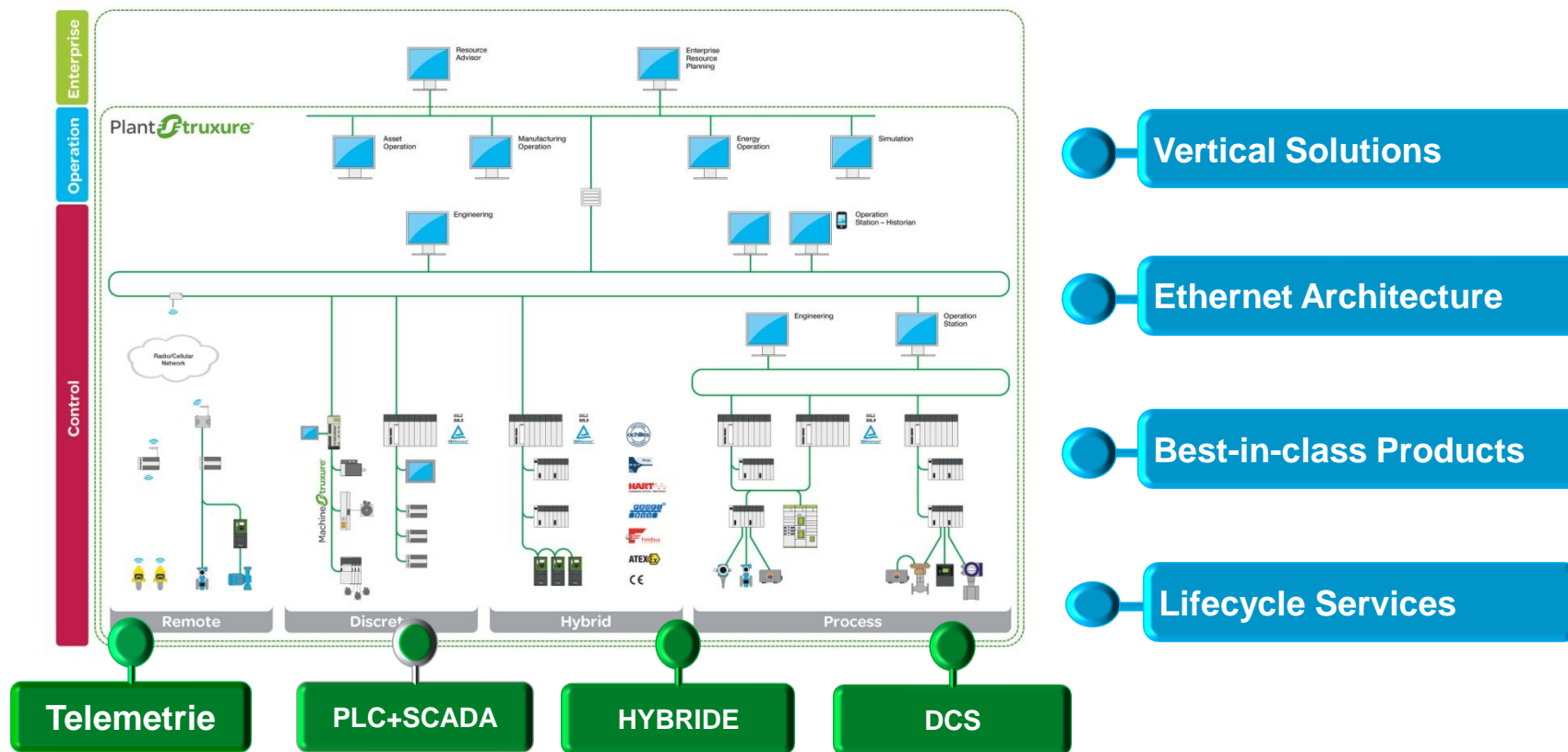
Rob van den Bos, Product Manager Automation

Life Is On

**Schneider**  
Electric

# Connected Architecture for your “Transparent Factory”

An Automation architecture should bring solutions for Telemetry, PLC+SCADA, Hybride and DCS together making a complete offering of lifecycle services to serve you make your business more efficient. From initial design until modernization.



# Connected architecture

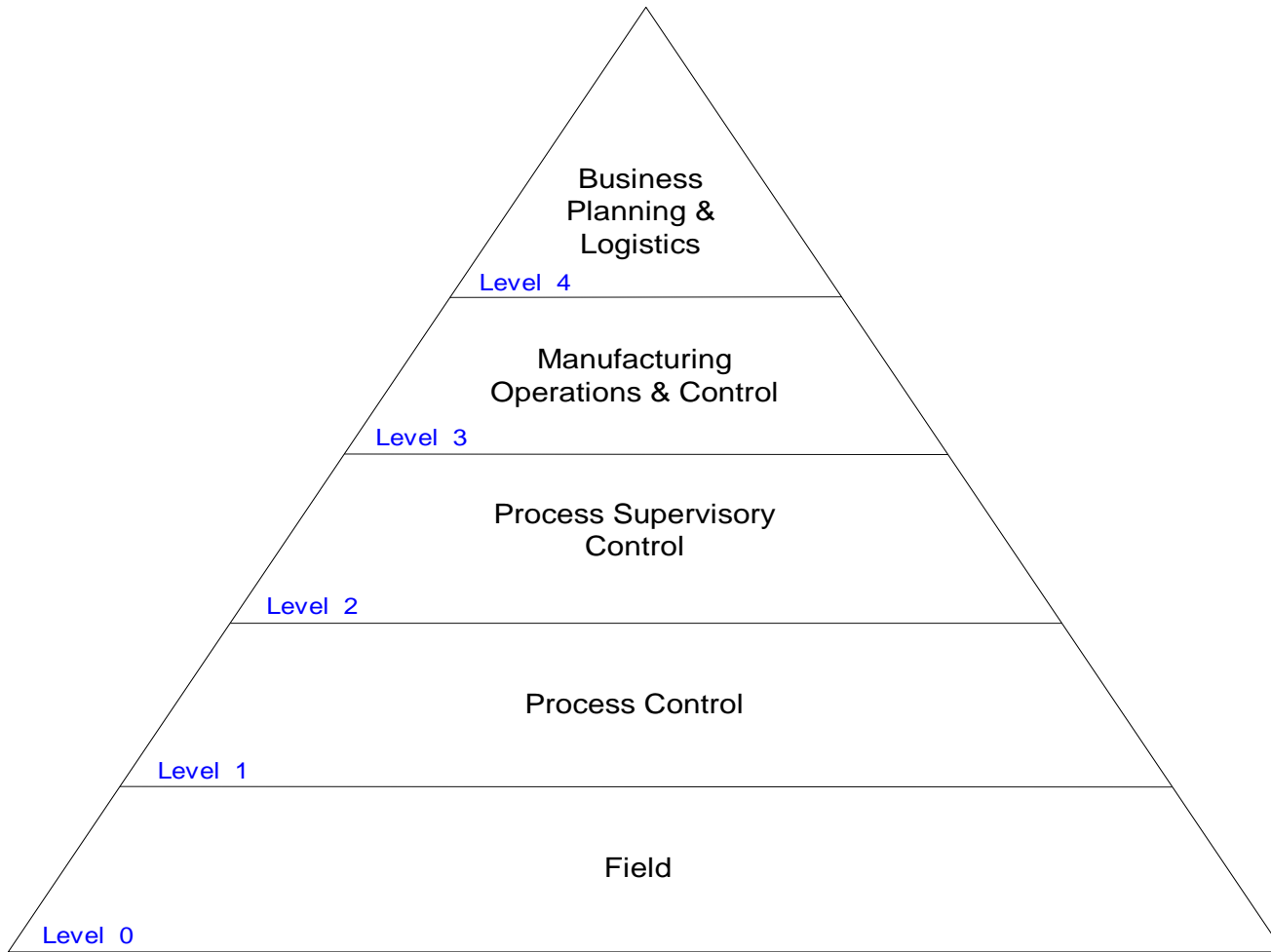
**Industry 4.0**, Smart Factories, Industrial Internet of Things (IIOT), hyperconnectivity...

All these concepts are **already** fully addressed with the **ePAC**, within an open **Ethernet** Automation **architecture**

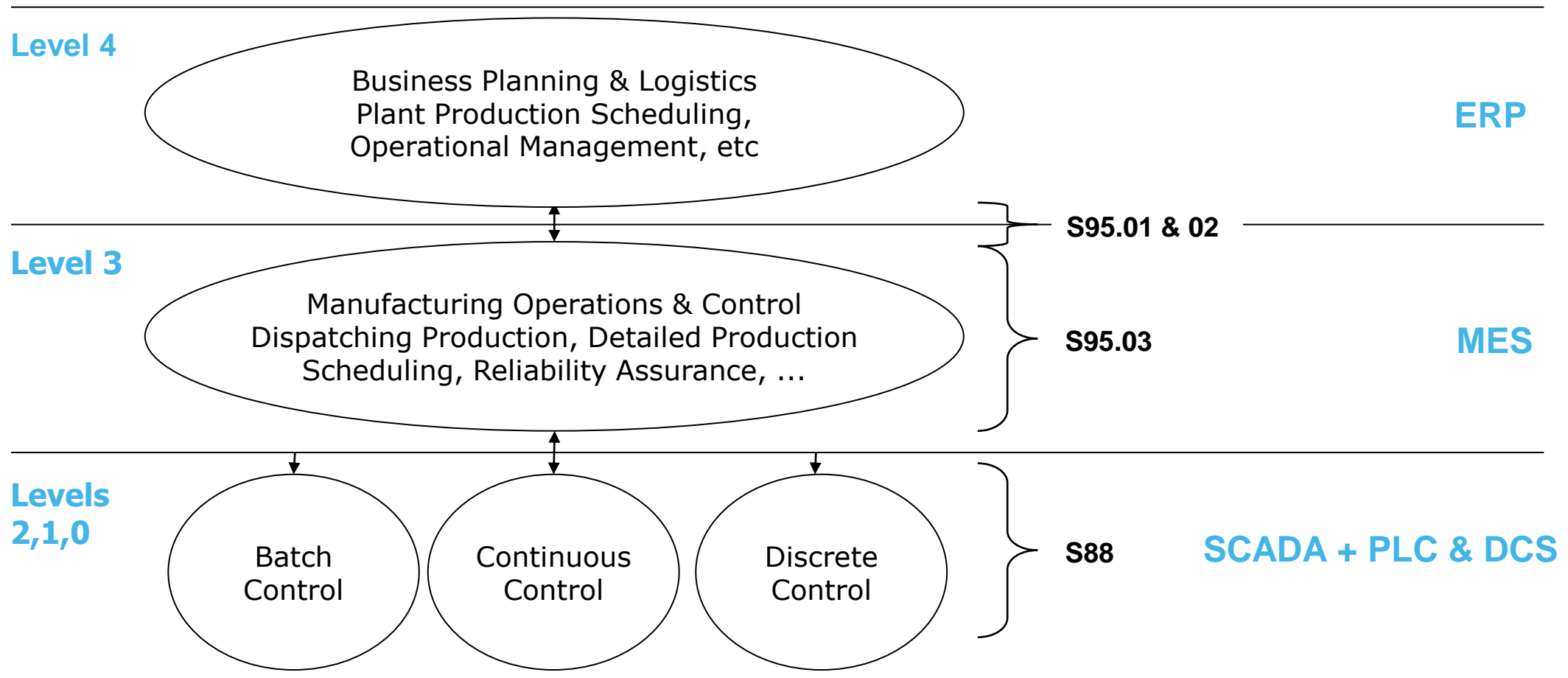




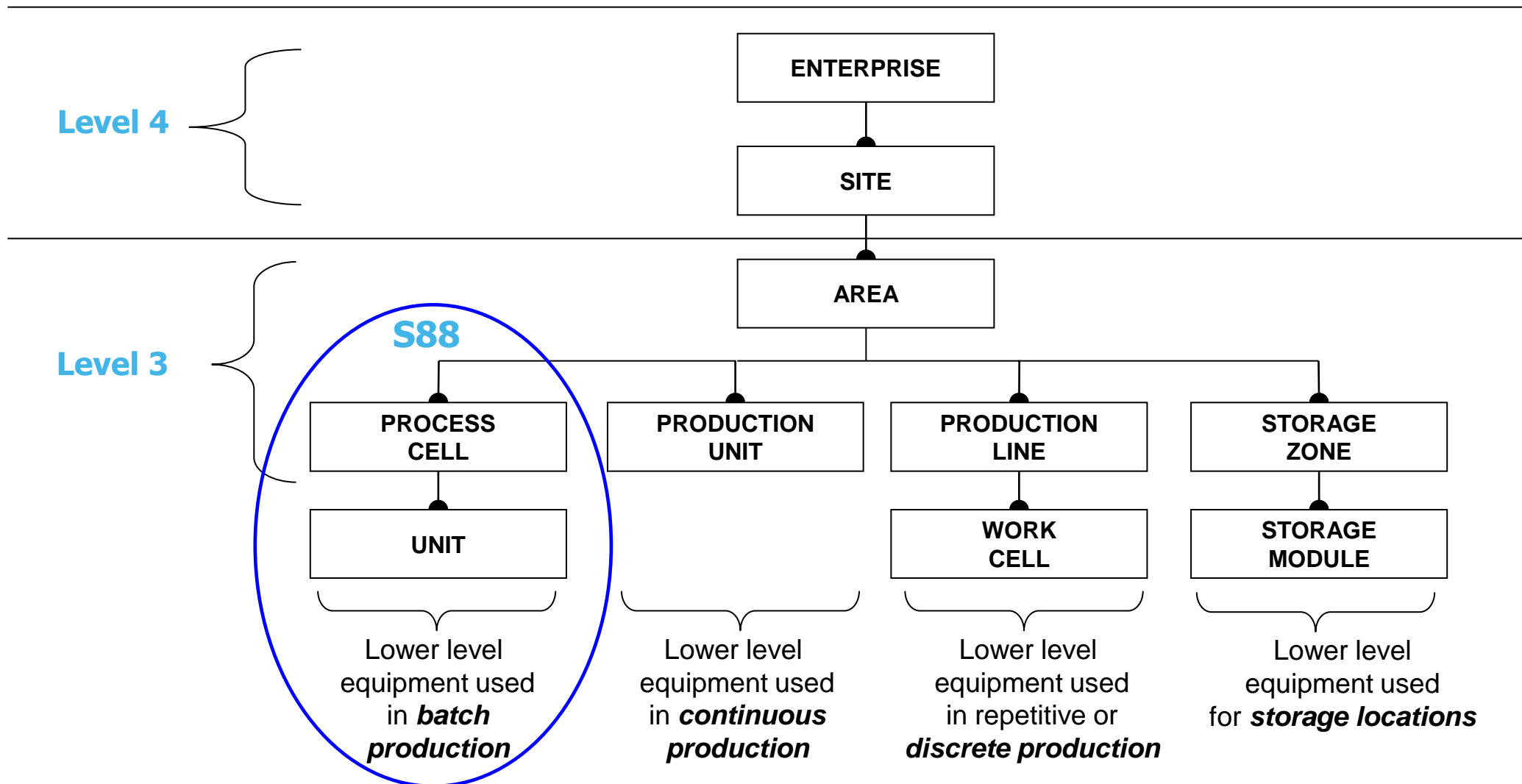
# The Transparent/Smart Factory asks for a structured definition of information sources & user-requirements



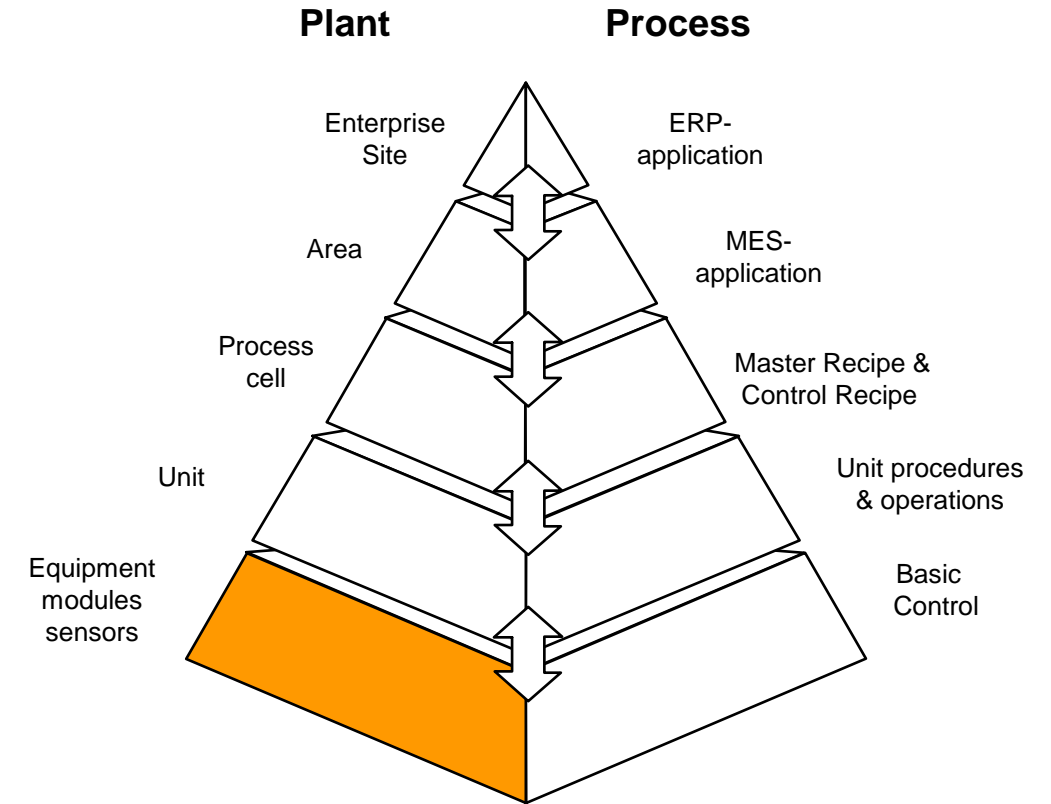
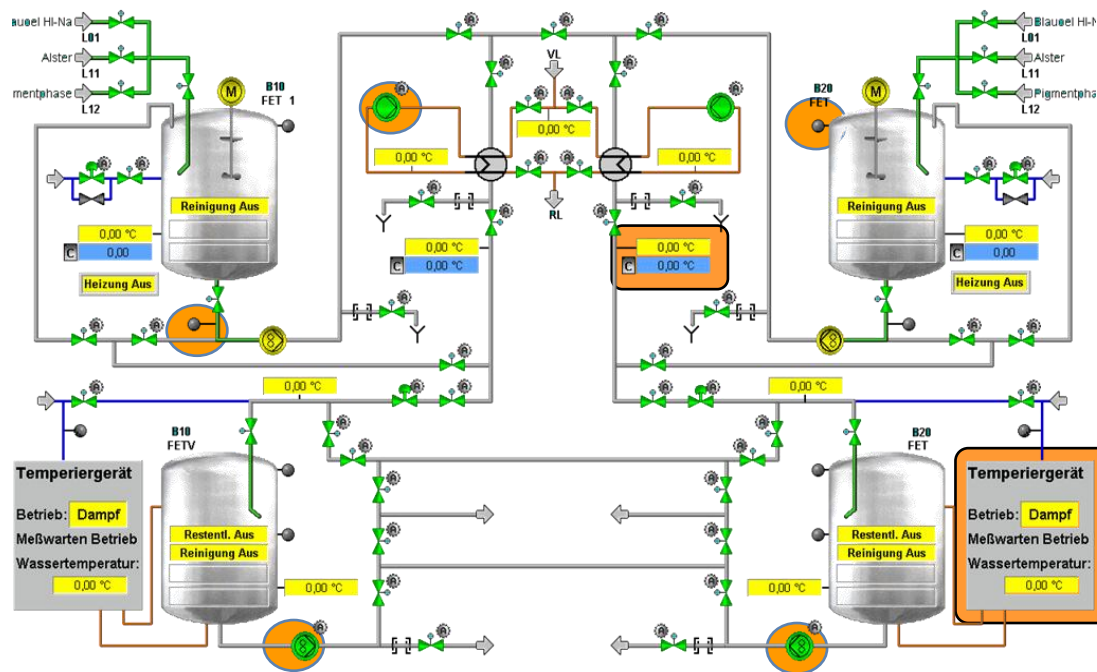
# Use the ISA95 structure / Hierarchical Activity Model



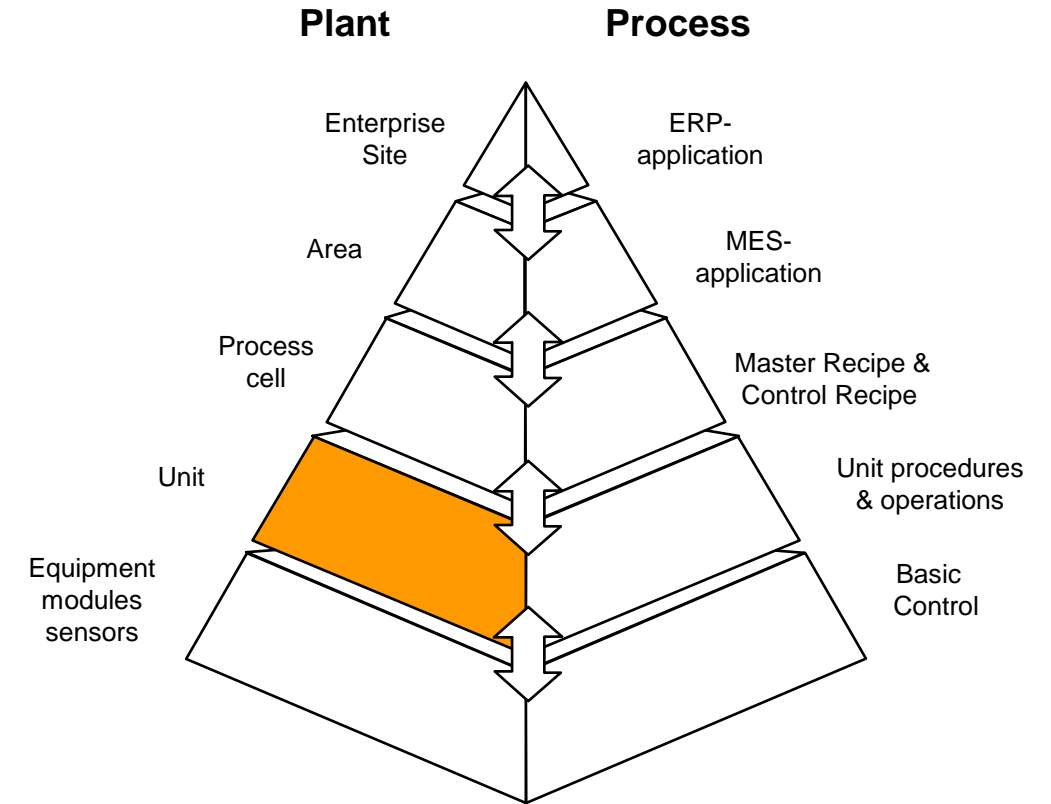
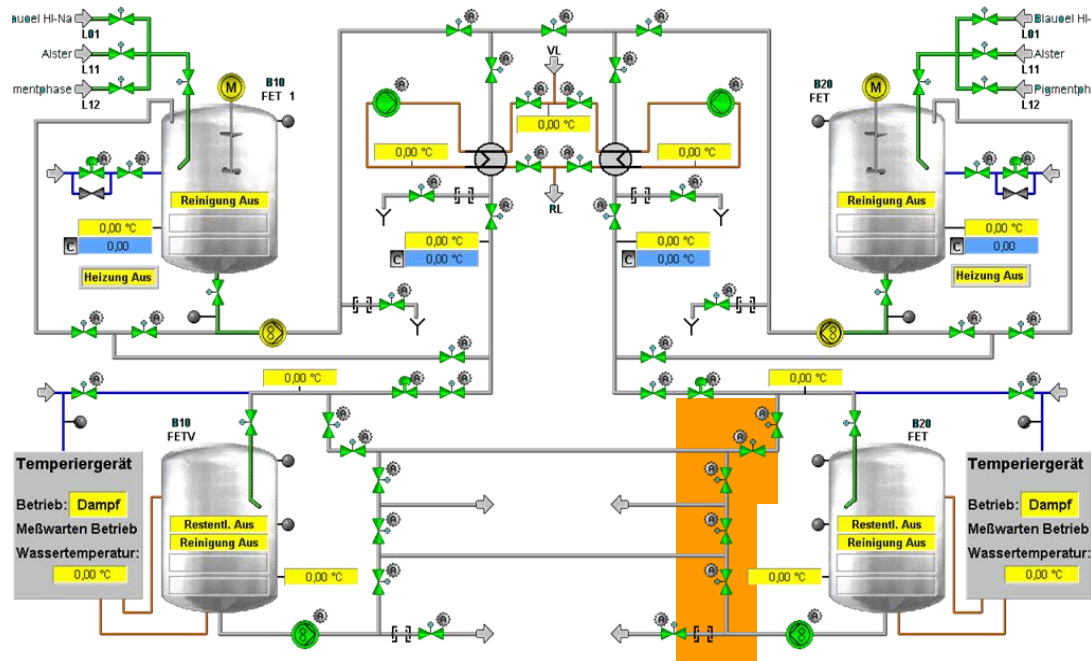
# Use the ISA95 structure / Hierarchical Equipment Model



# Use the S88 structure for FLEXIBLE Batch Processing

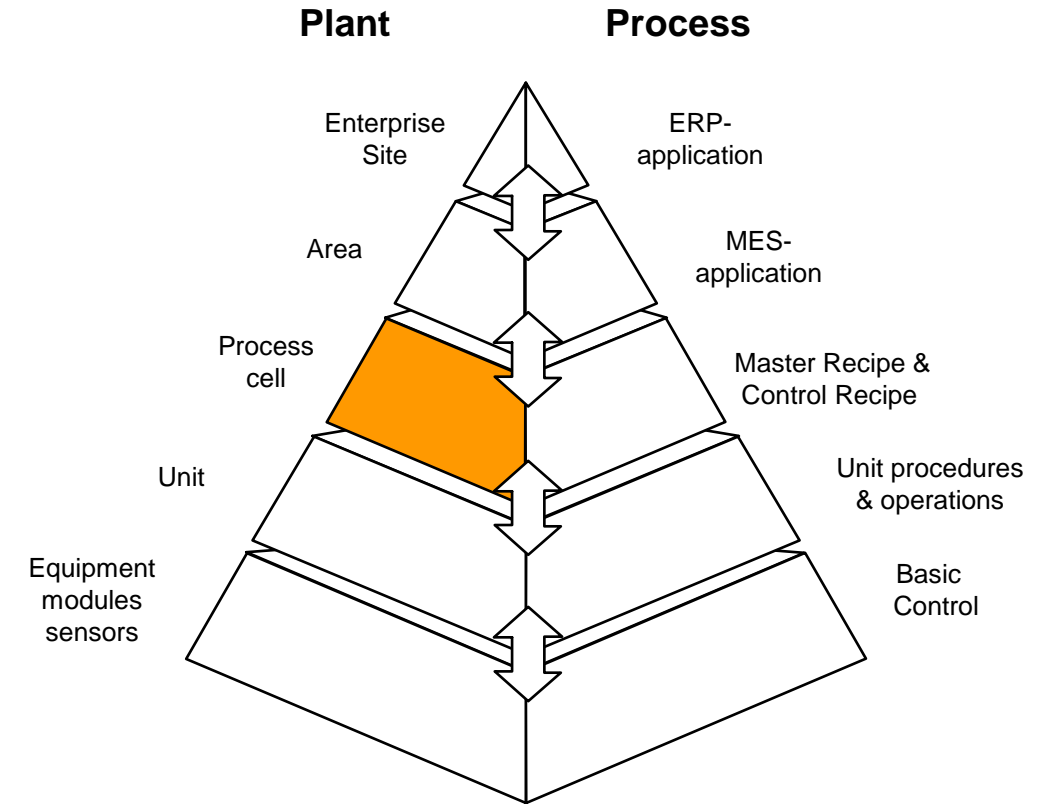
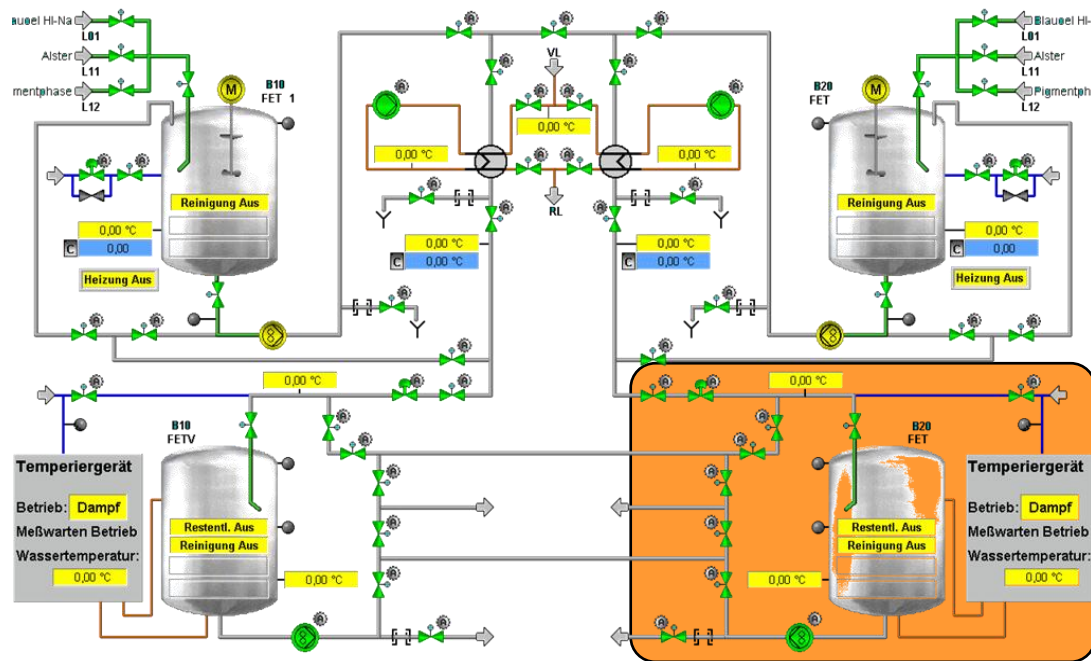


# Use the S88 structure for FLEXIBLE Batch Processing

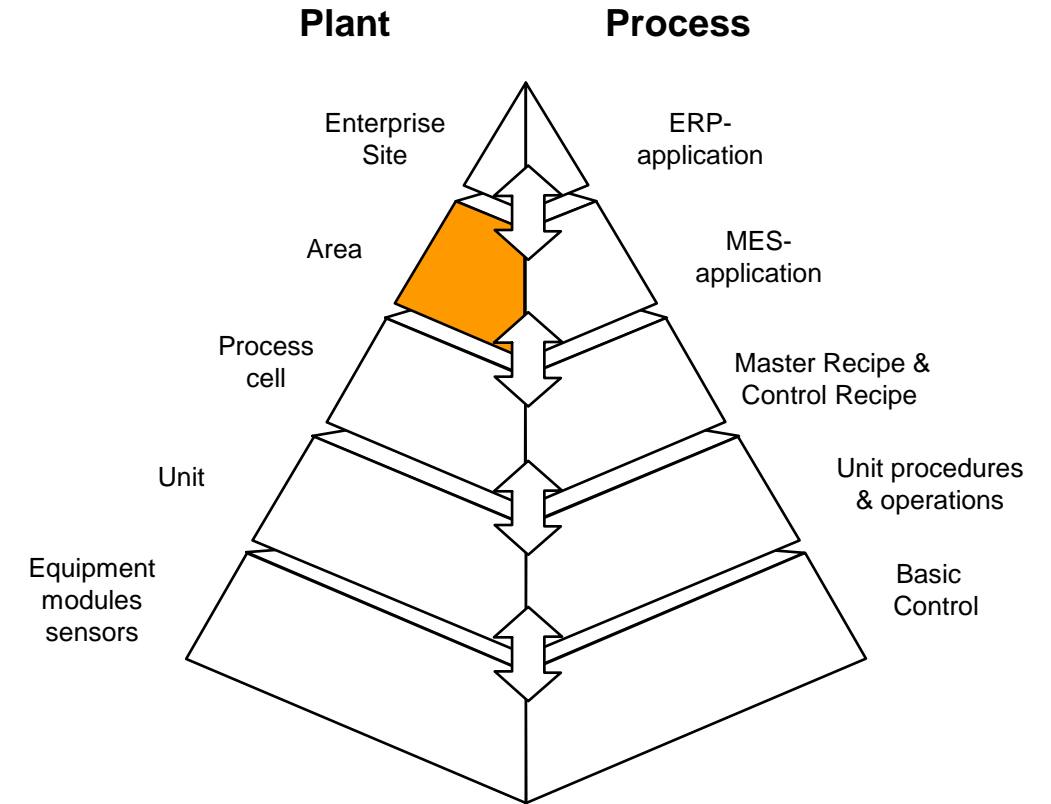
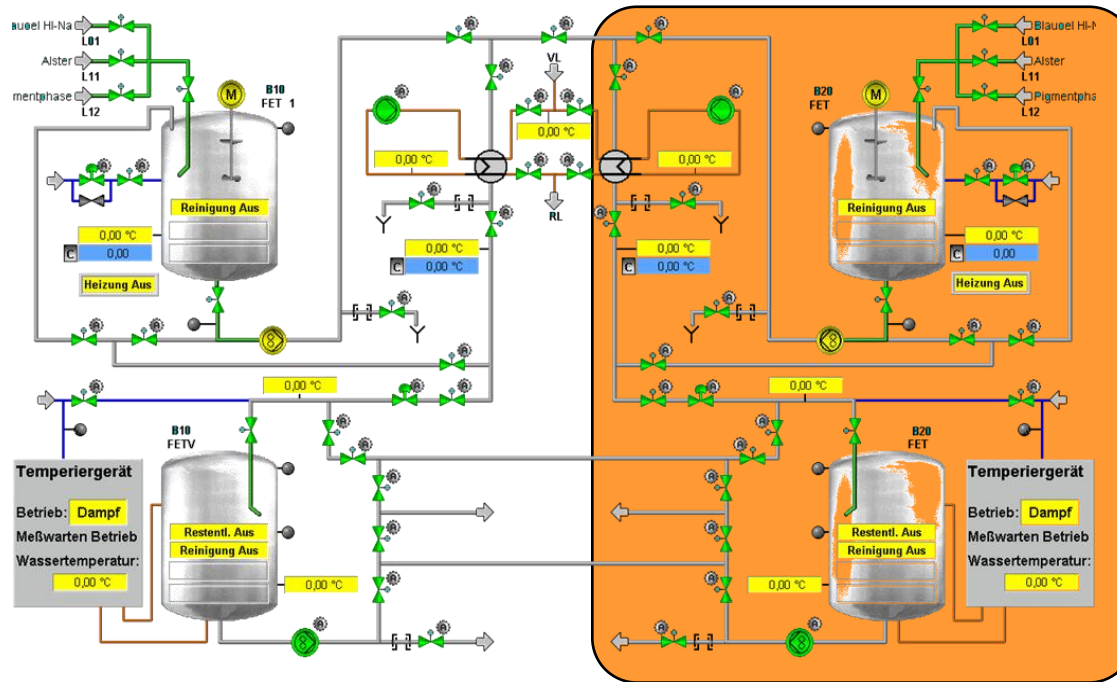




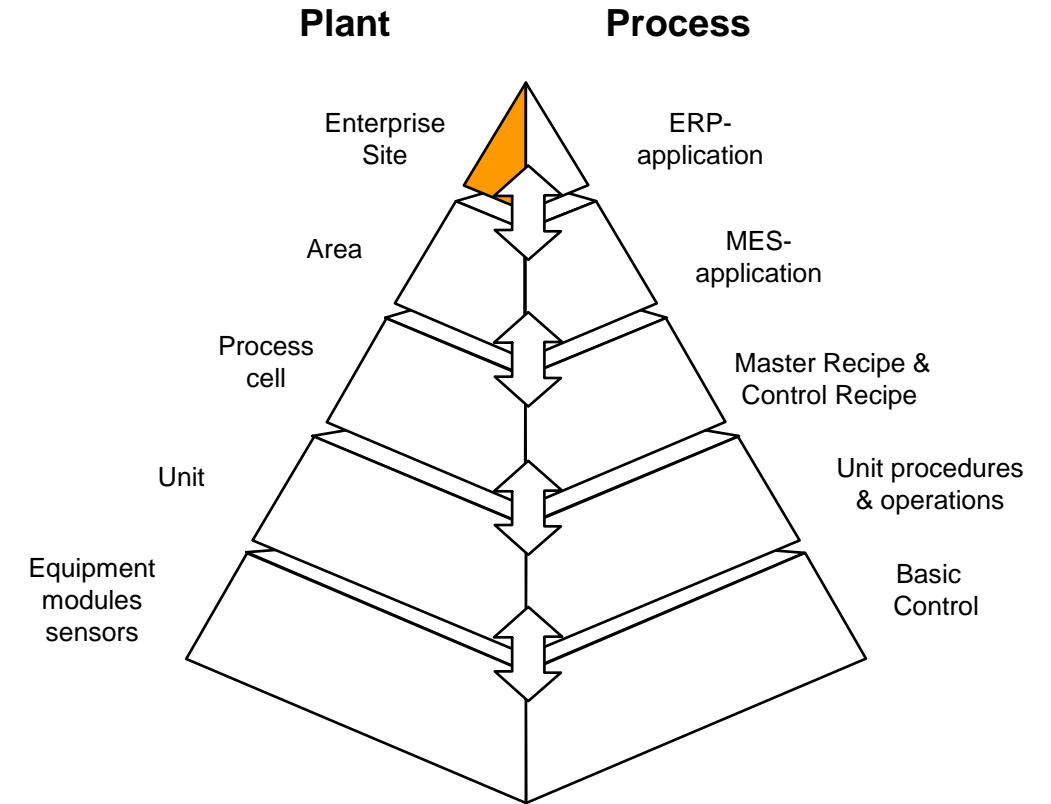
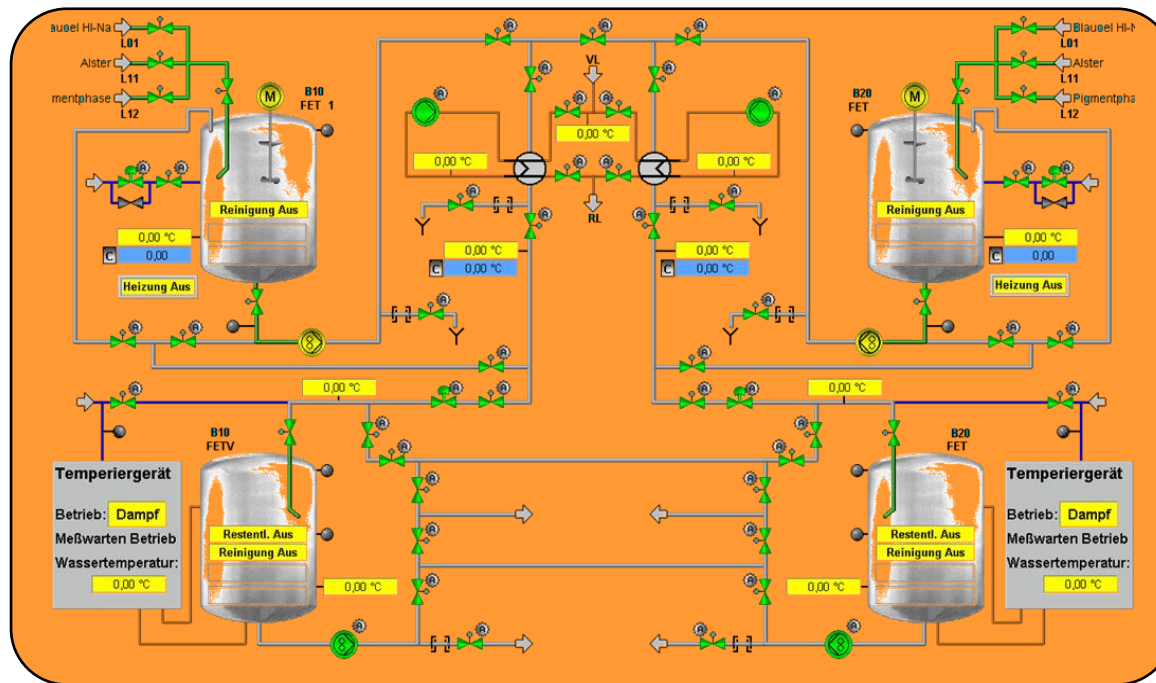
# Use the S88 structure for FLEXIBLE Batch Processing



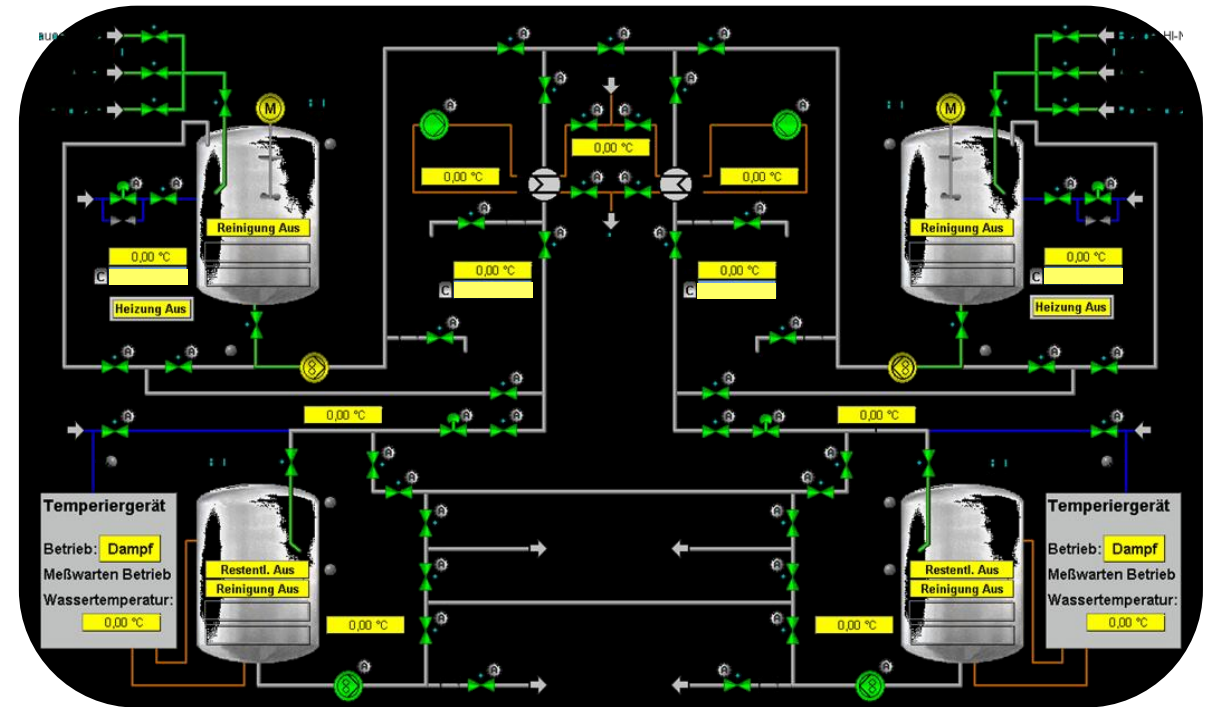
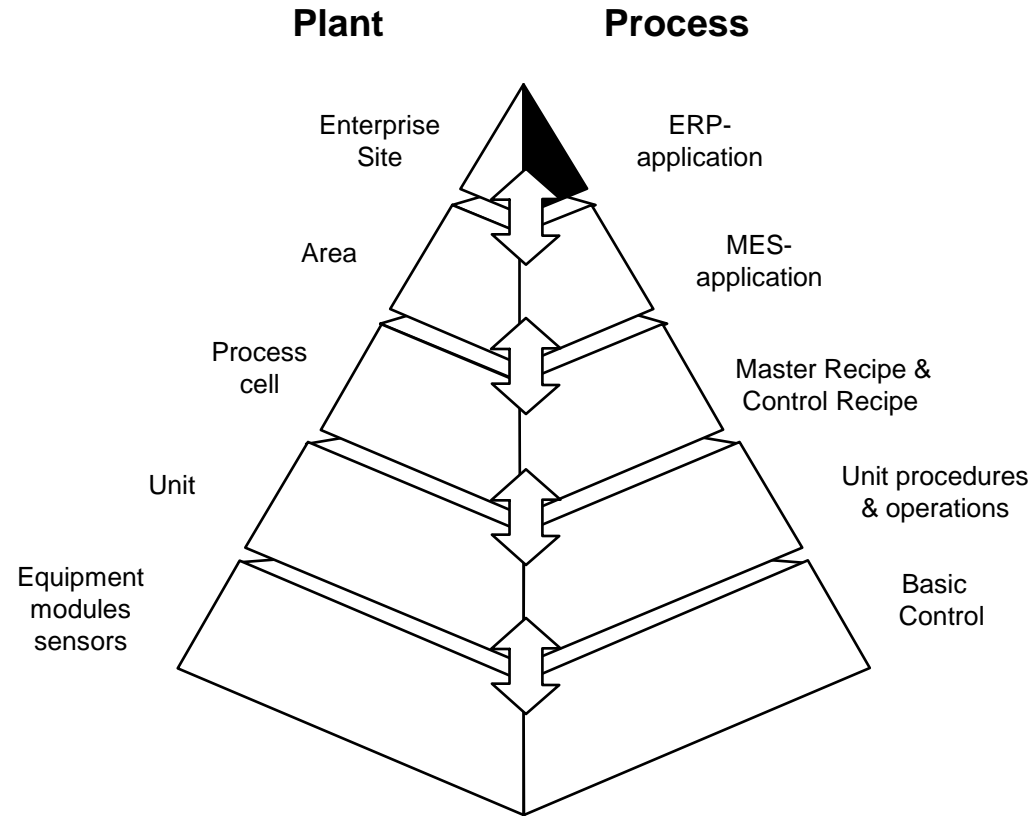
# Use the S88 structure for FLEXIBLE Batch Processing



# Use the S88 structure for FLEXIBLE Batch Processing

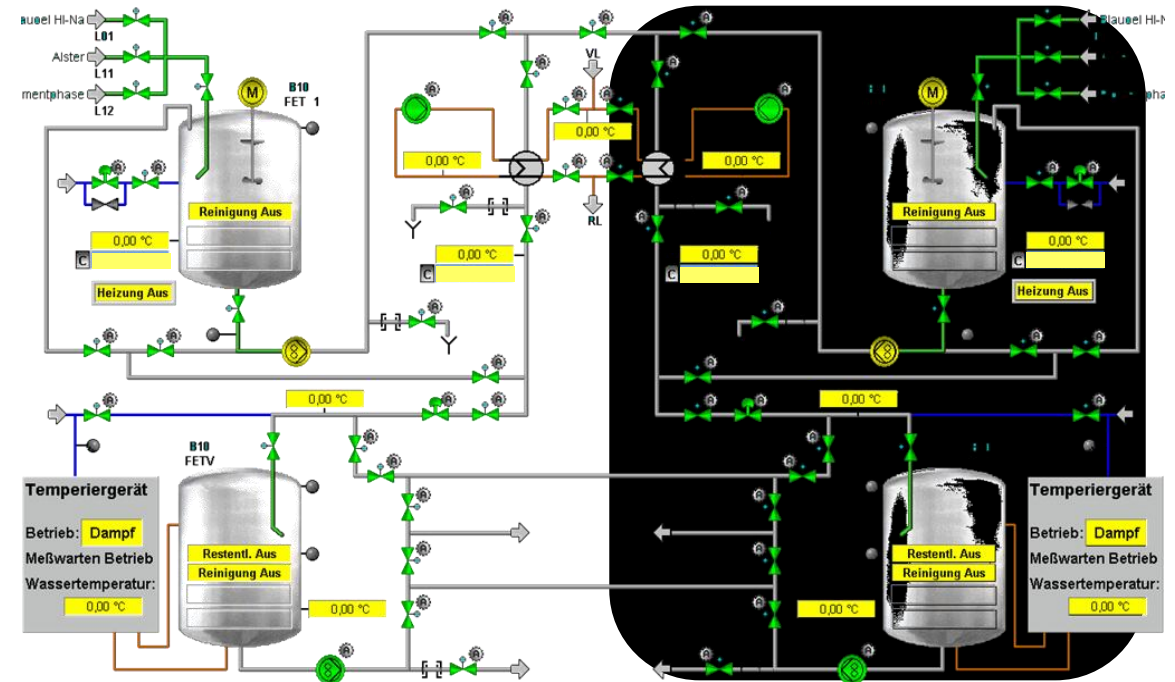
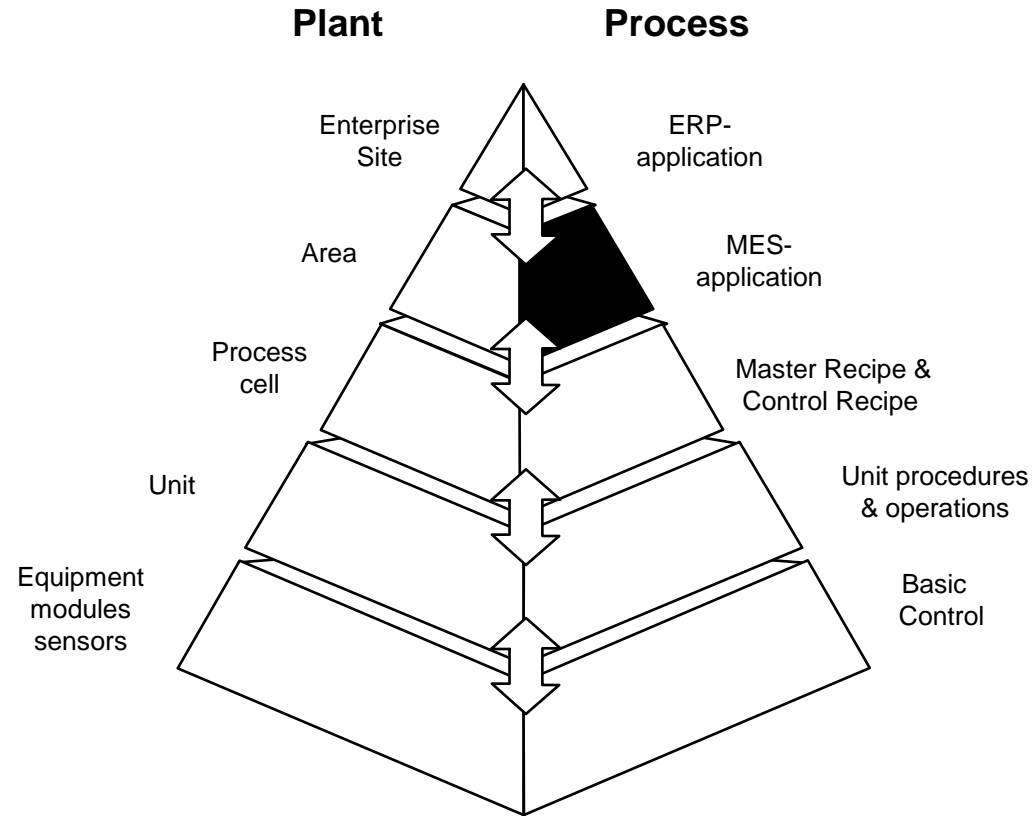


# Use the S88 structure for FLEXIBLE Batch Processing

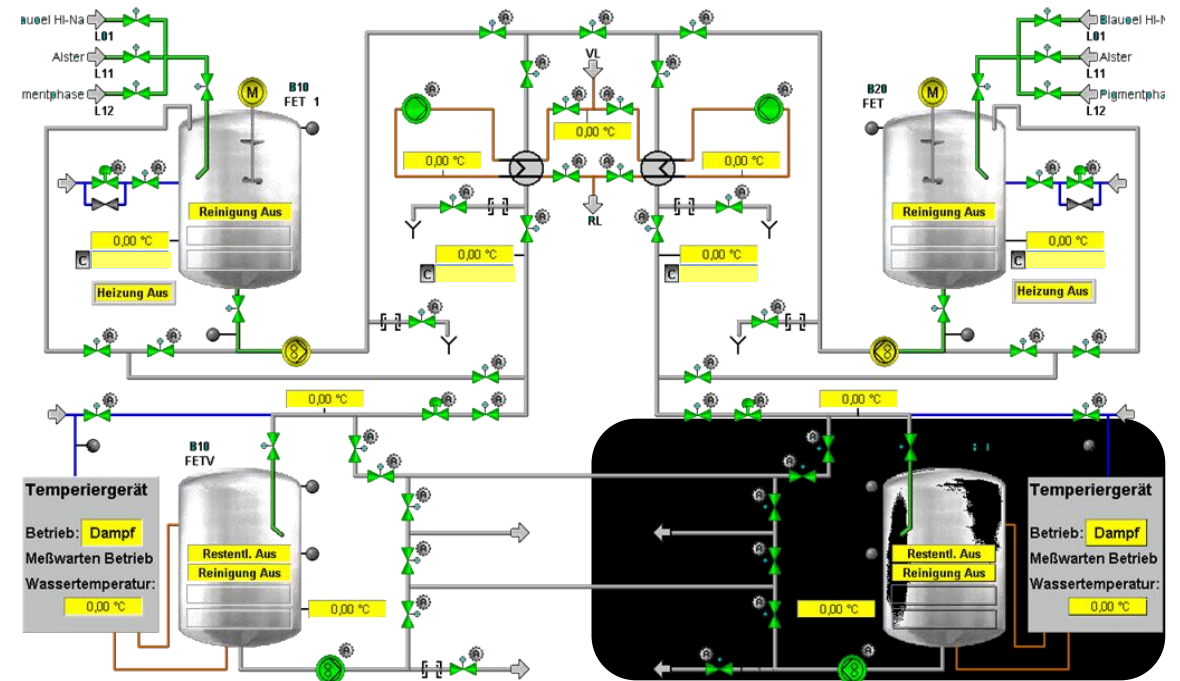
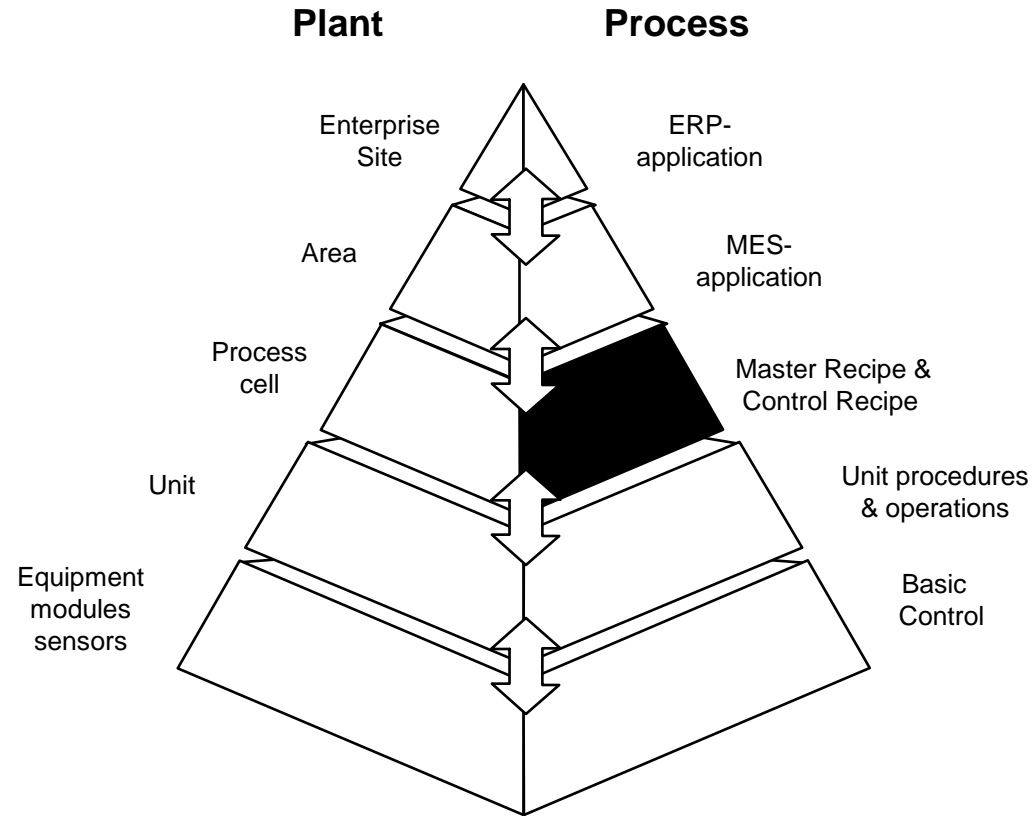




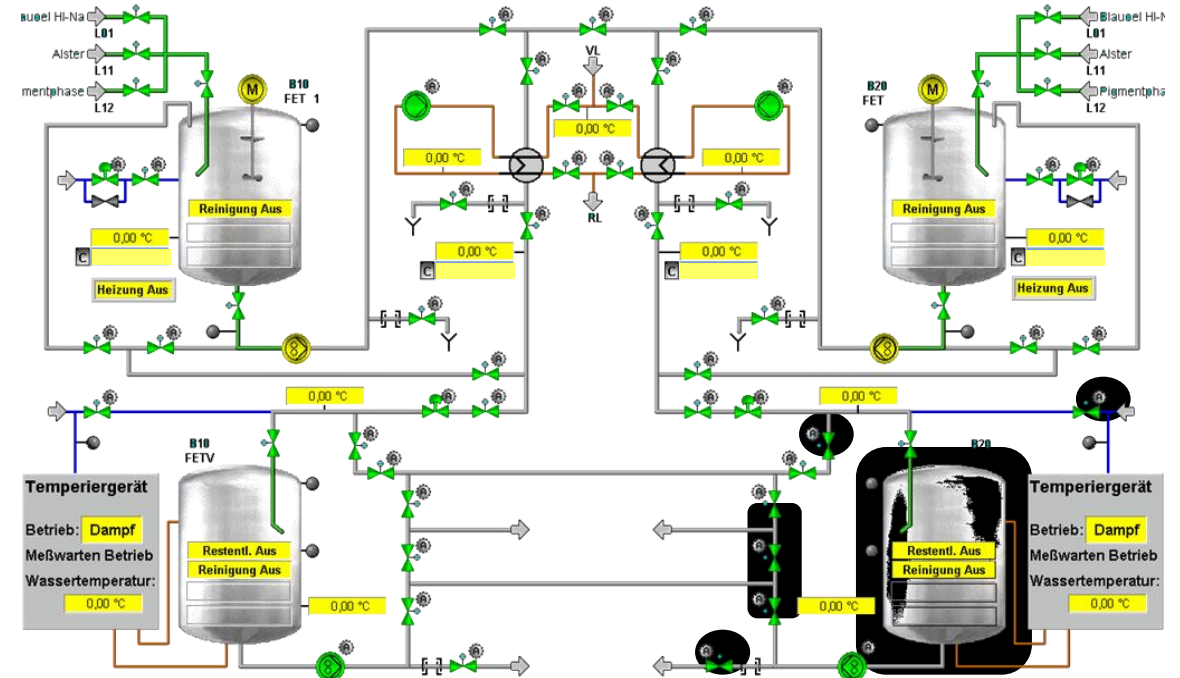
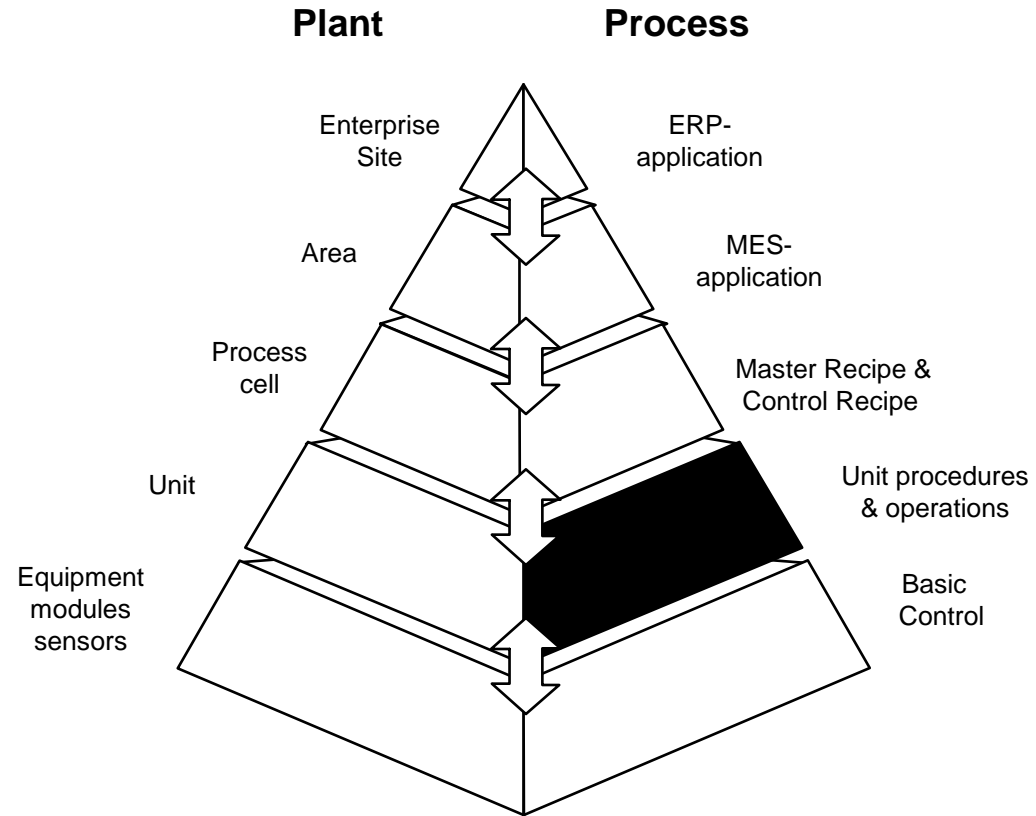
# Use the S88 structure for FLEXIBLE Batch Processing



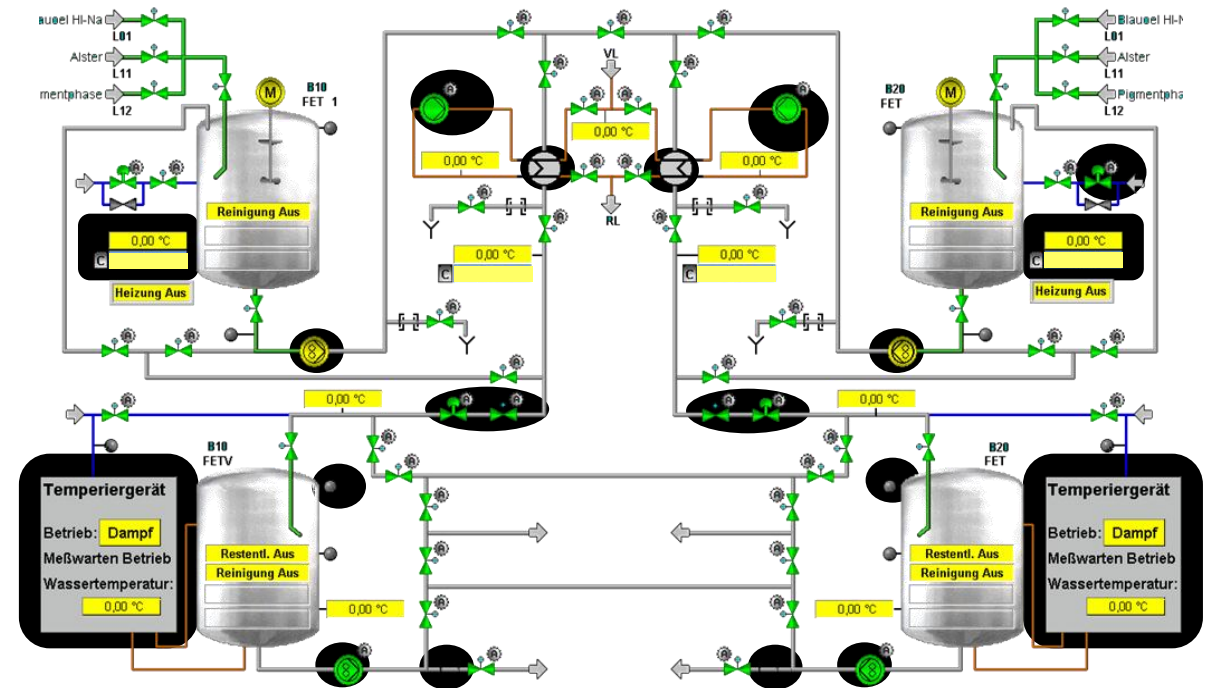
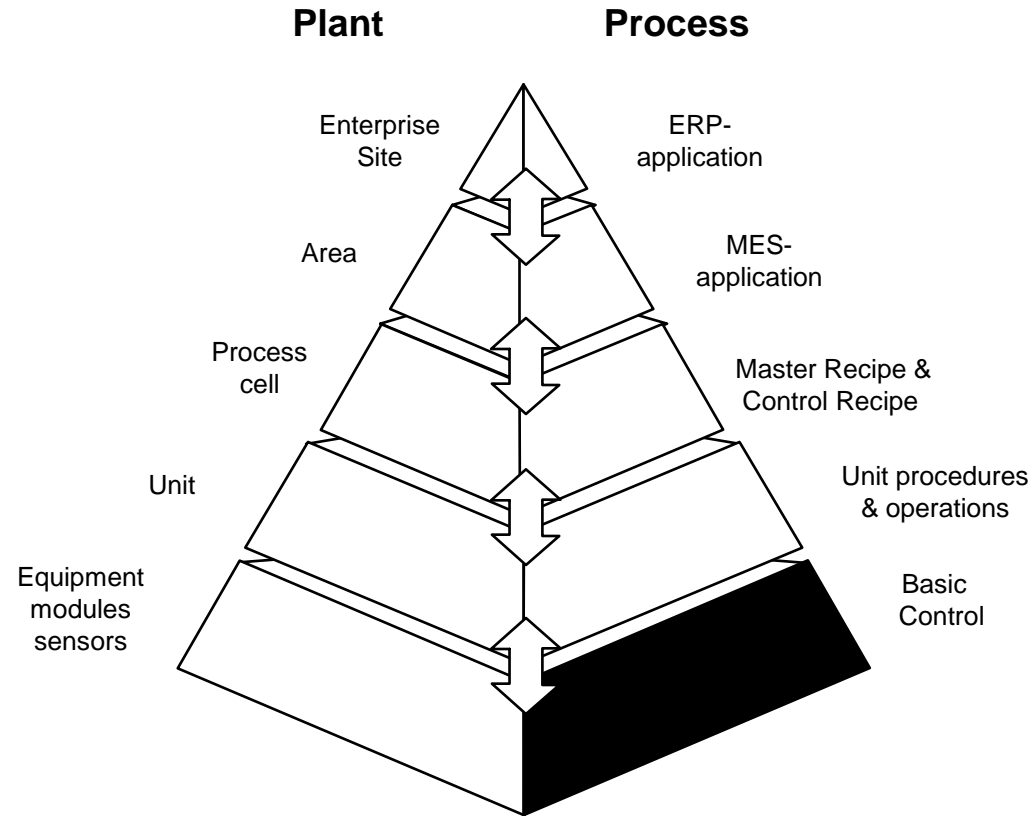
# Use the S88 structure for FLEXIBLE Batch Processing



# Use the S88 structure for FLEXIBLE Batch Processing



# Use the S88 structure for FLEXIBLE Batch Processing



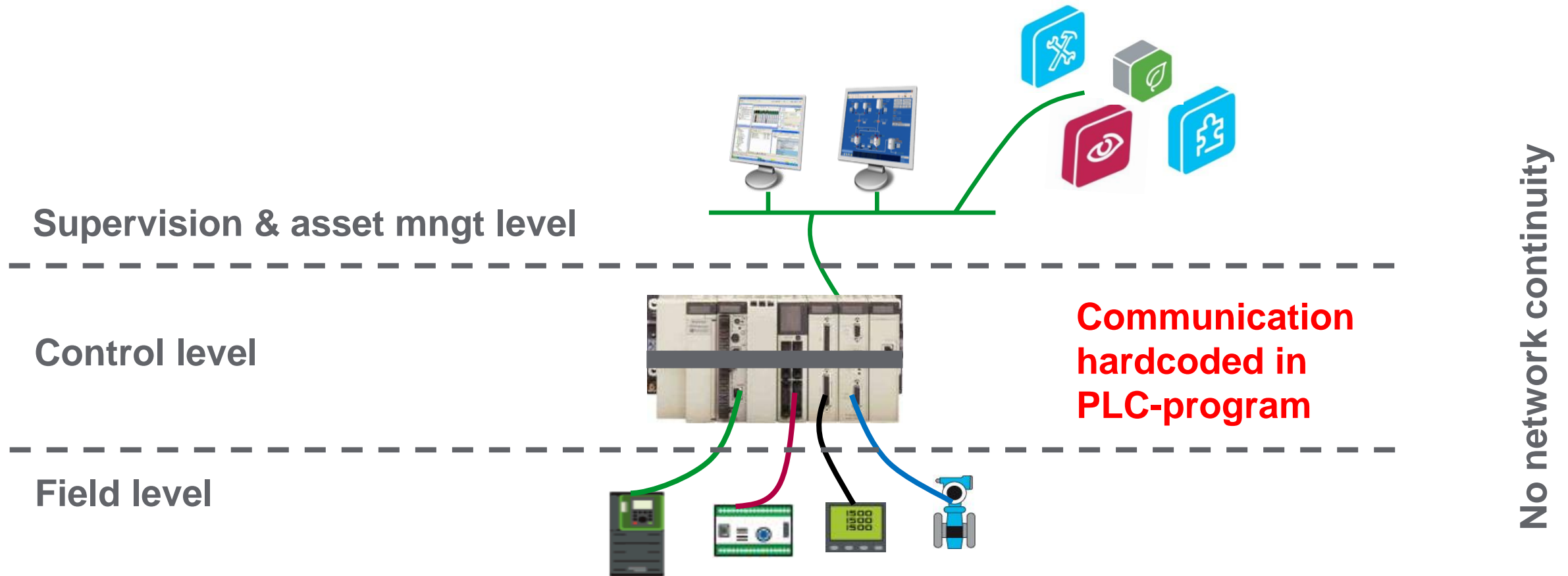


Fully **transparent & open** architecture

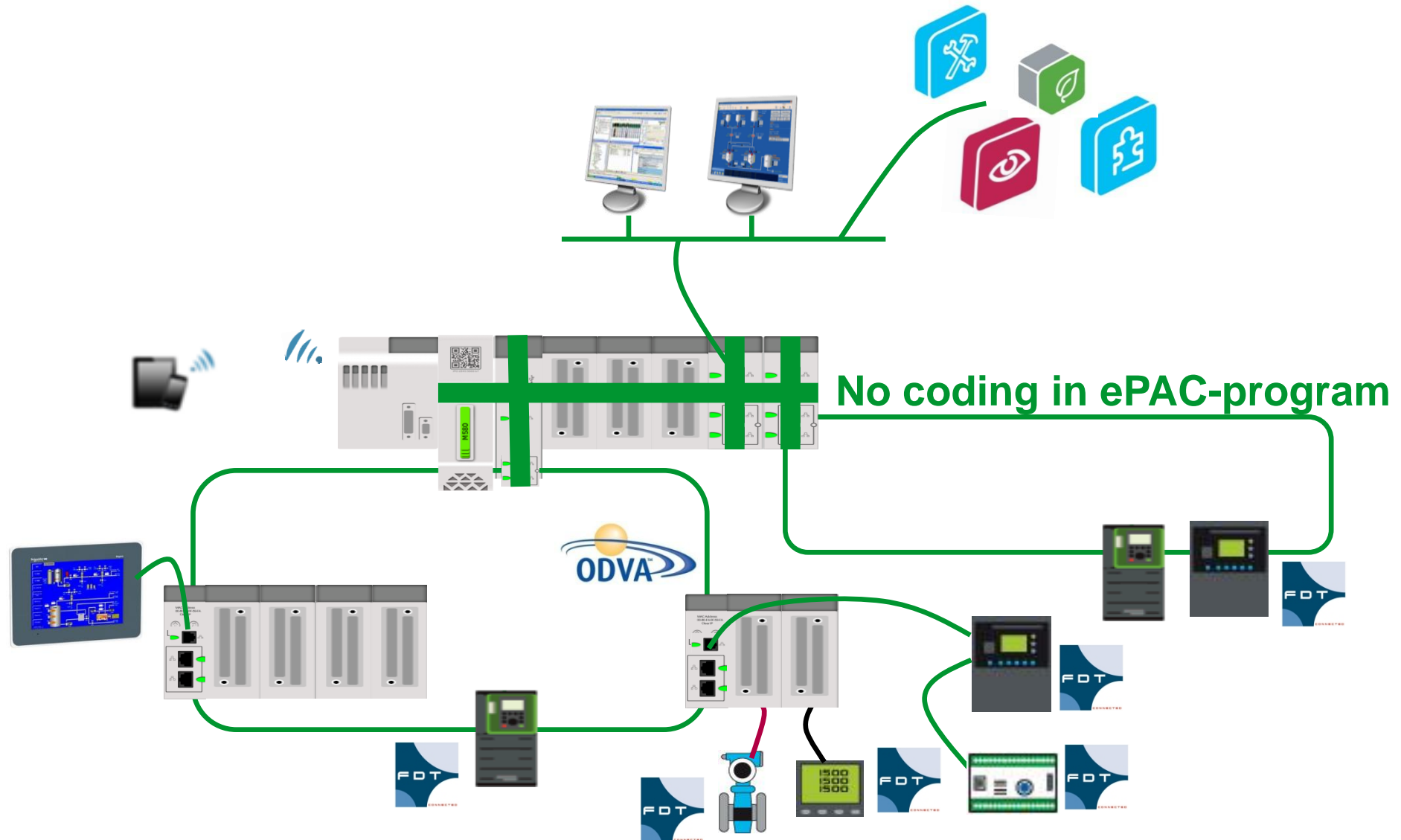
Now we provide a totally transparent and open architecture **from bottom to top**. since Ethernet communication is also integrated as the **backbone** of the **ePAC system bus**.



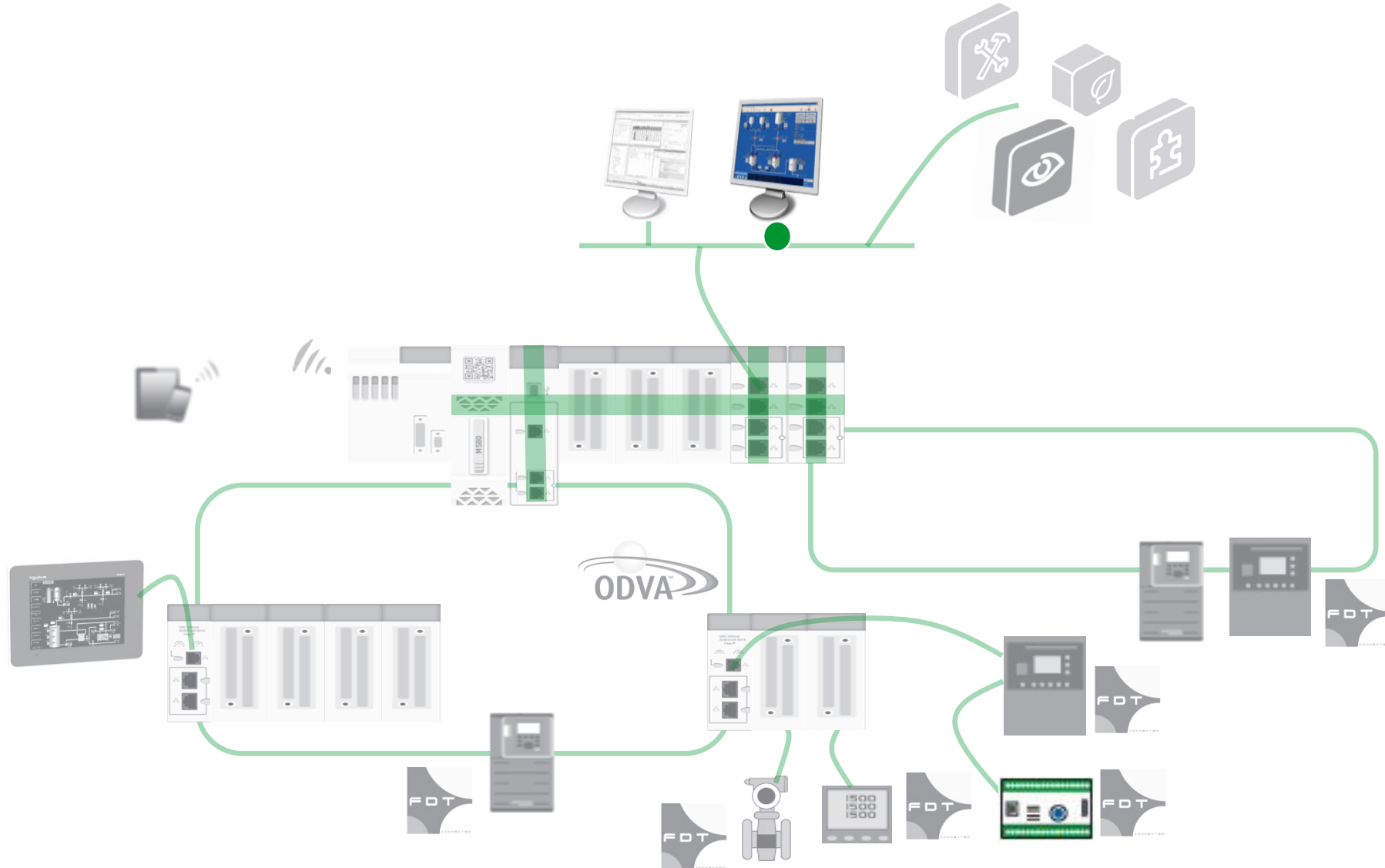
# From slow Data Processing via heterogeneous networks...



...to very FAST Data Processing via a single Ethernet backbone

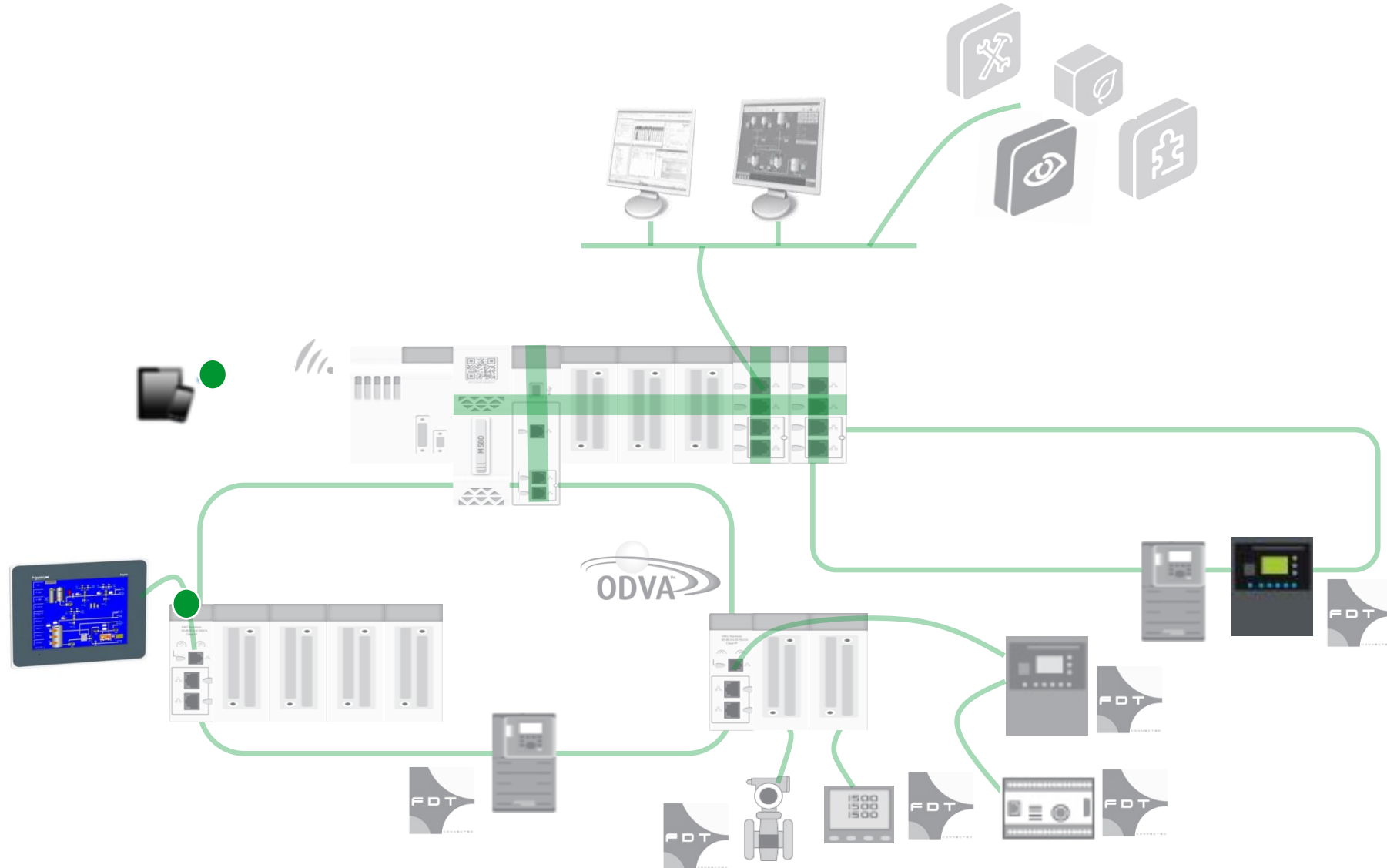


# Bottom-to-top FLEXIBLE & TRANSPARENT Data Processing

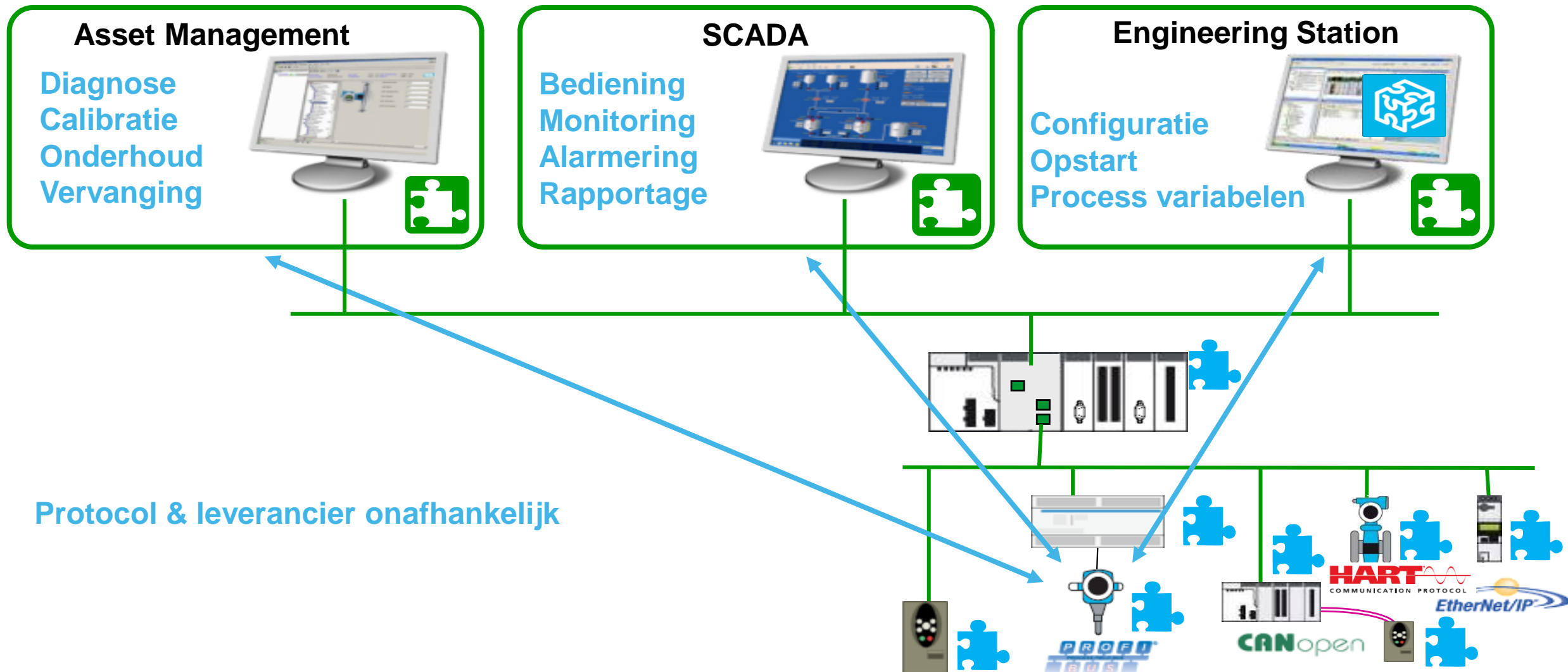




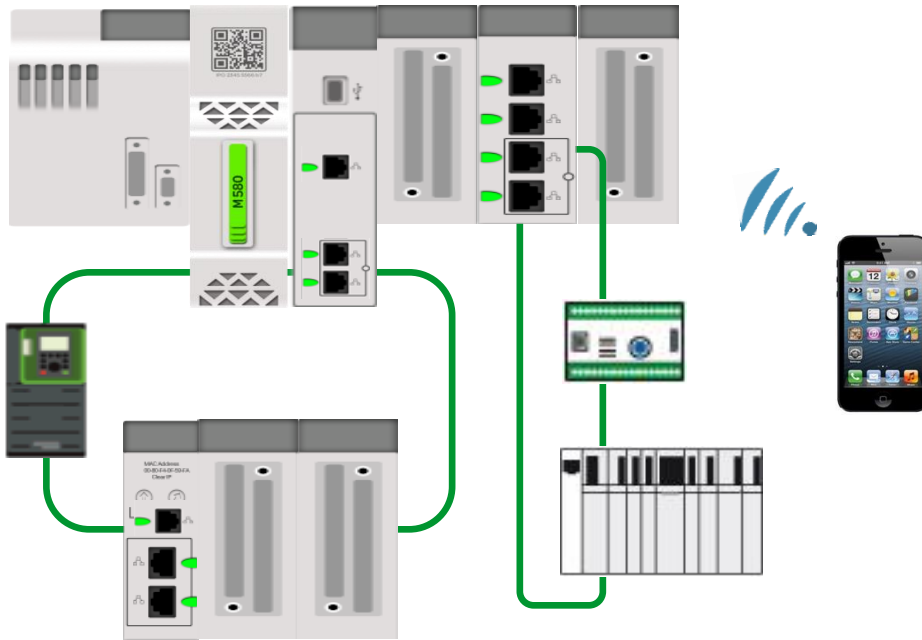
# The right data at the right time in the right location



# Modicon M580 → *FDT DTM Strategie*



# Discover what an Agile ePAC means



## Flexible in Design & Architecture

- Ethernet integrated in the controller
- Simple integration of core devices (FDT/DTM)
- Flexible & scalable topologies

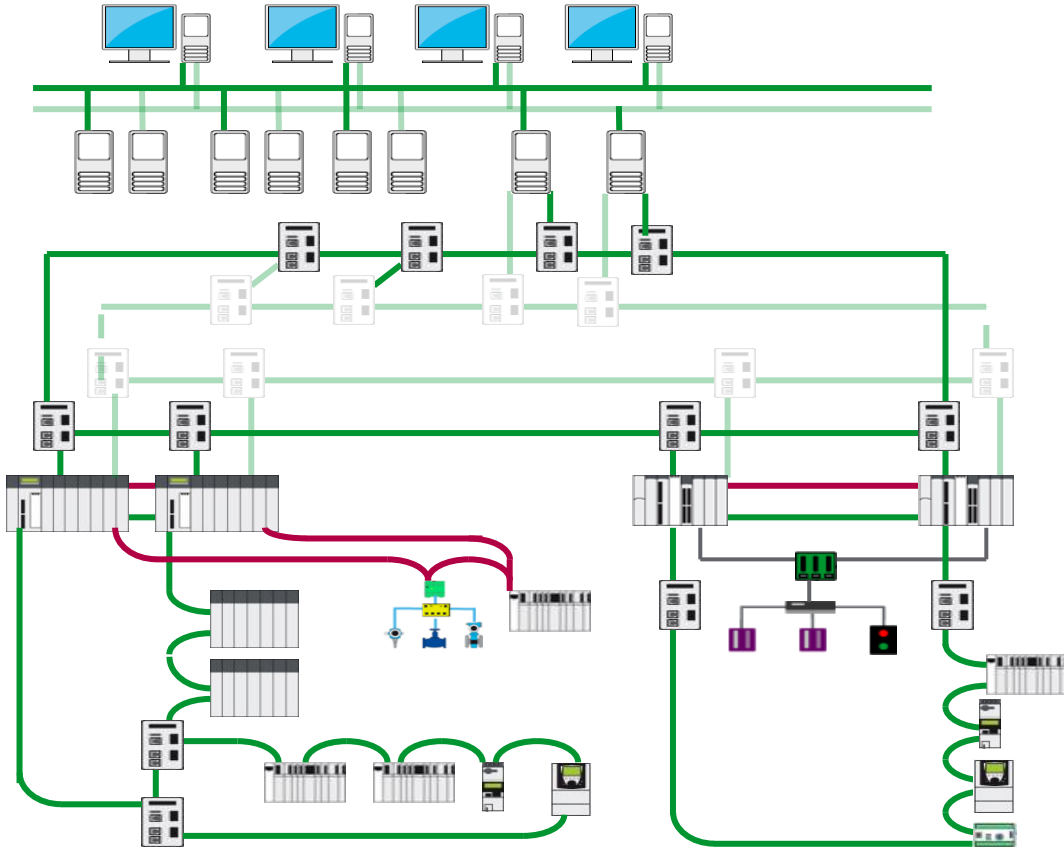
## Flexible in Operations

- Change Configuration On The Fly (CCOTF)
- System Time Stamping (no programming)

## Flexible in Maintenance

- Full system diagnostic from your smart phone

# High Availability



Plant  truxure™

## No stoppage of the proces when:

- An I/O drop is added to the system
- An I/O module is added and configured
- An I/O channel is configured

## Automatic update of all variables

- from PAC to SCADA via Speedlink Dynamic.

## Hot swap for all X80 modules

- Availability 99.9996%

**CCOTF = Change Configuration On the Fly!!**

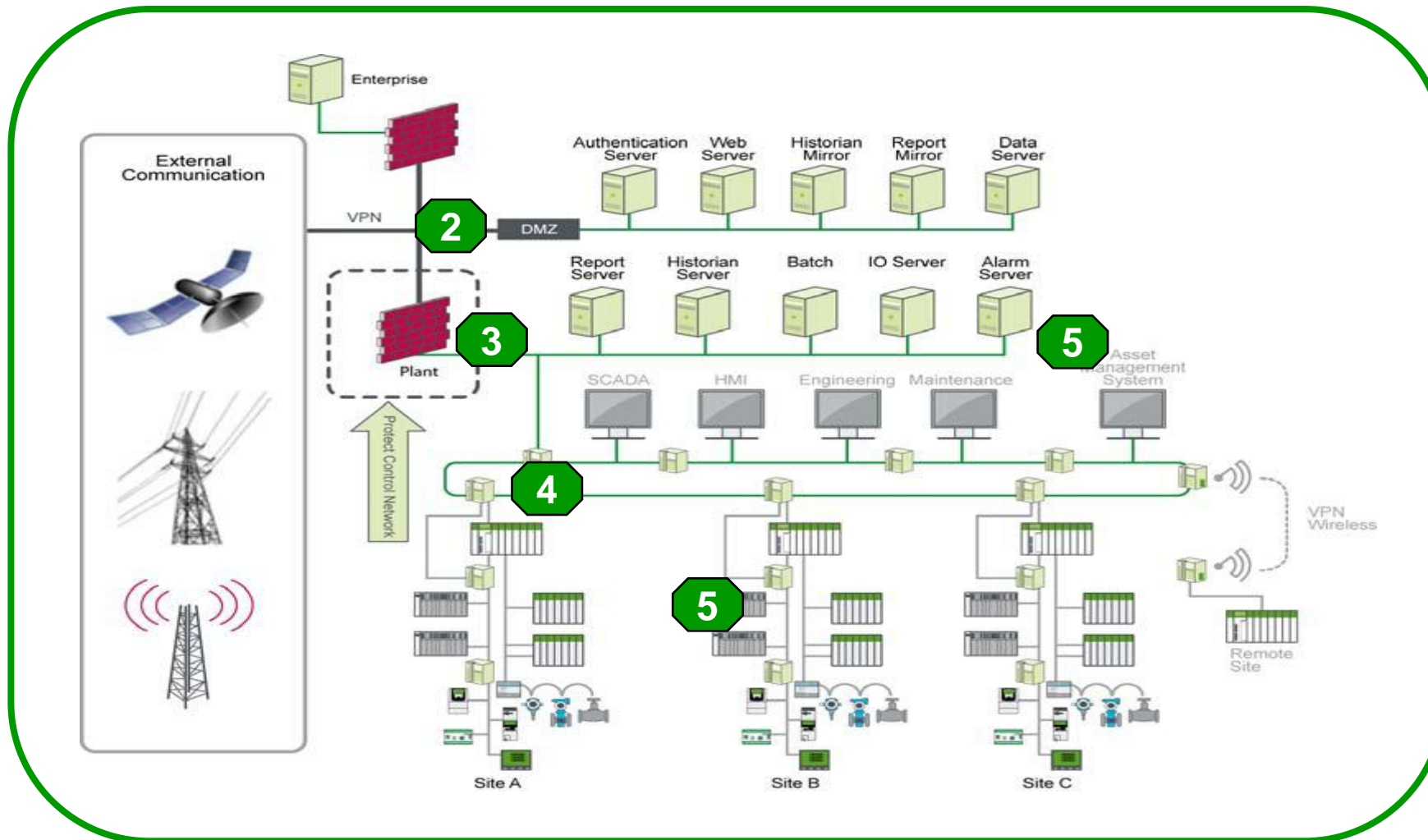


# Smart Data & Cyber Security

Smart Data, direct from the source requires strong functionality in **Cyber Security**. Doing this both on system level as well as product level



# Defense-in-Depth Approach

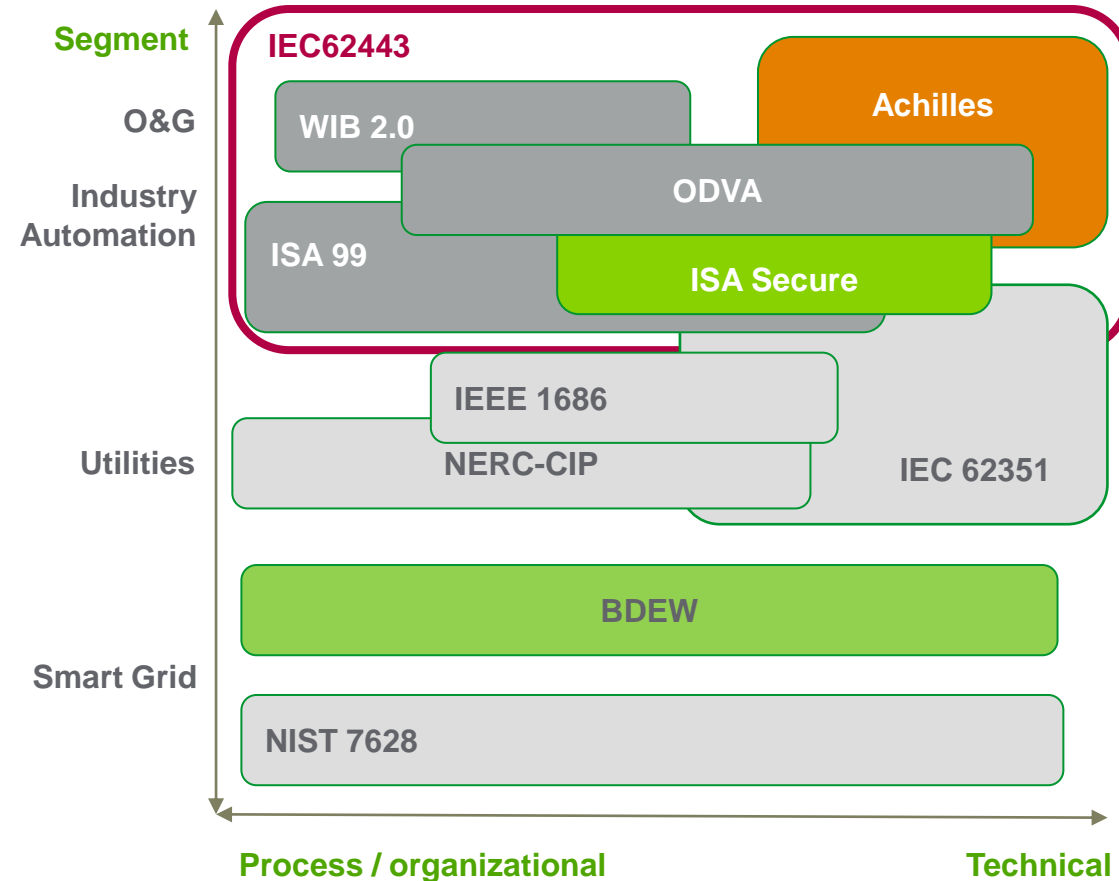


## 6 key steps :

1. Security Plan
2. Network Separation
3. Perimeter Protection
4. Network Segmentation
5. Device Hardening
6. Monitoring & Update

# Cybersecurity Ready

voldoet aan cybersecurity standaarden



Geïntegreerde Security functies zoals gedefinieerd door de standaarden:

## IEC62443

- Evolutie van ISA99. Dekt apparaten systemen en gebruik van systemen af

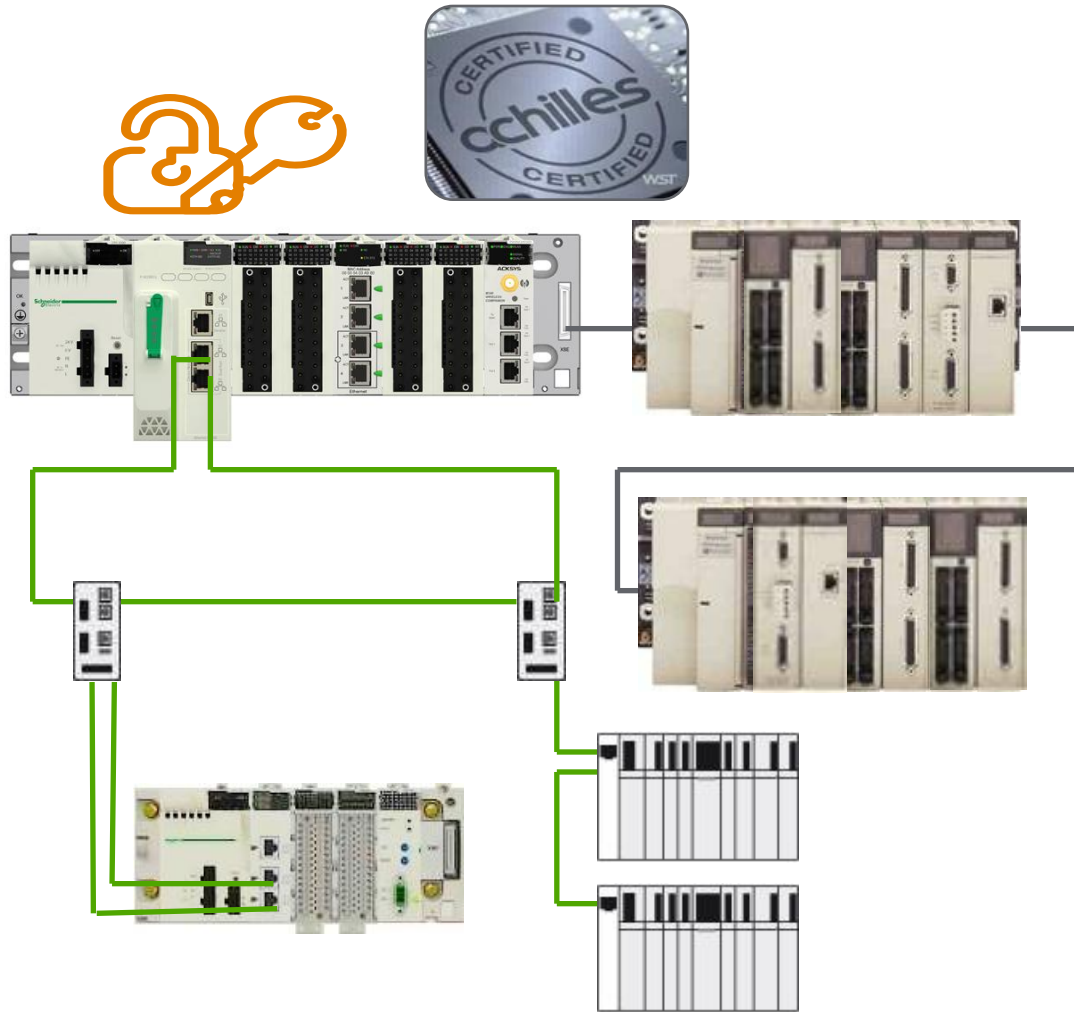
## Achilles Level 2

- Gedetailleerde inspectie van TCP/IP verkeer
- Omvat Ethernet, ARP, IP, ICMP, TCP en UDP
- Toont de robuustheid aan tegen een gedefinieerde set van testen





# The most secure investment



## Our most secure PAC

- Cybersecurity & know-how protection
- Robustness according Achilles Level 2
- Identification controller / application
- IPSec
- Event logging

## Robust, certified & proven

- Robustness above IEC standards
- Fully certified
- More than 200 000 X80 configurations sold

## Smart migration

- Unity Pro as common engineering tool
- X80 as common I/O system
- Premium I/O & wiring re-use
- Smooth migration paths





VRAGEN OVER

Verticale integratie eenvoudiger dan ooit

Life Is On

**Schneider**  
Electric