

Industrial Connectivity

Pepperl+Fuchs Comtrol

Spreker

Dennis Christensen

BDM- Systems Group

A company with solutions for every demand in automation technology

The Pepperl+Fuchs Group



VMT
Pepperl+Fuchs

Vision Technology Solutions

CONTROL
Pepperl+Fuchs

IoT Infrastructure

ESPACE 6D
Pepperl+Fuchs

3-D Scanning Technology

NEOCEPTION
Pepperl+Fuchs

Industry 4.0 Solutions

ecom
A Pepperl+Fuchs Brand

Mobile Solutions

Technology Range



- Proximity Sensors



- Photoelectric Sensors



- Vision Sensors



- Ultrasonic Sensors



- Inclination Sensors



- Rotary Encoders



- Positioning Systems



- RFID Systems



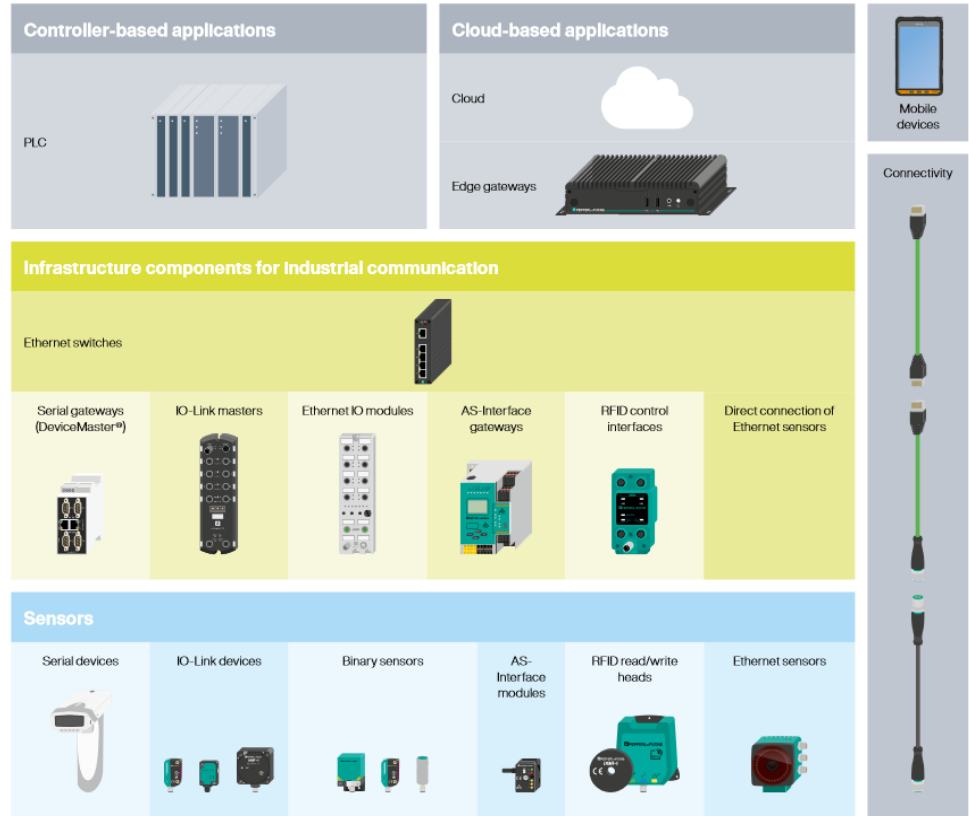
- Industrial Communication



- Connectivity

Network Overview

Industrial Ethernet can have different meanings

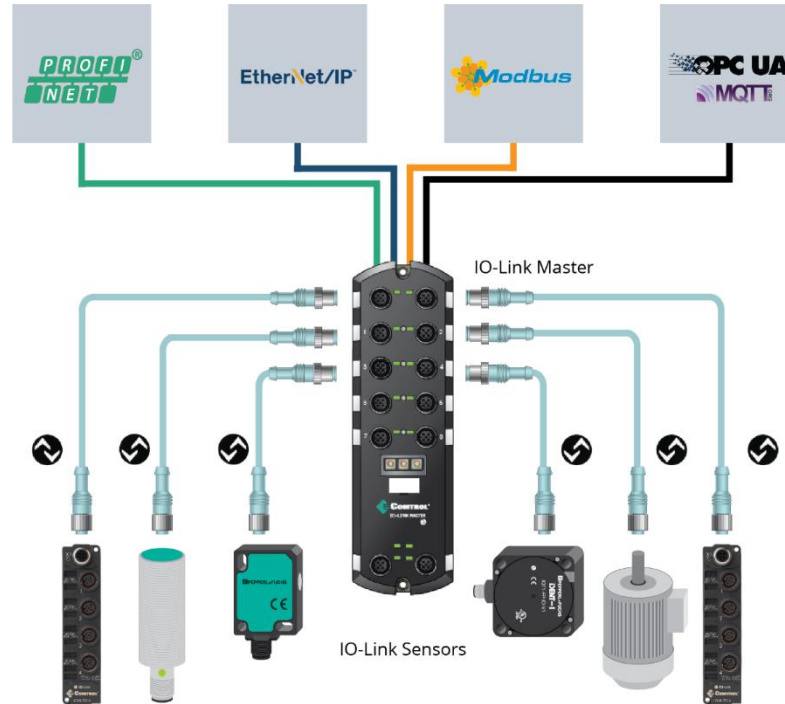


IO-Link Masters IOT



WHAT IS IO-LINK?

IO-Link is a bi-directional point-to-point serial communication protocol used to communicate with sensors and/or actuators. Electrical Layer - PNP, NPN or 4-20mA outputs for sensors. IO-Link is now another option.

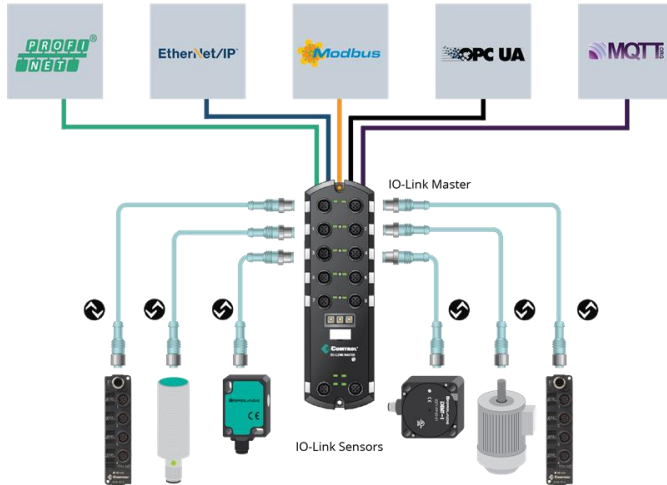


IO-Link Master Gateways



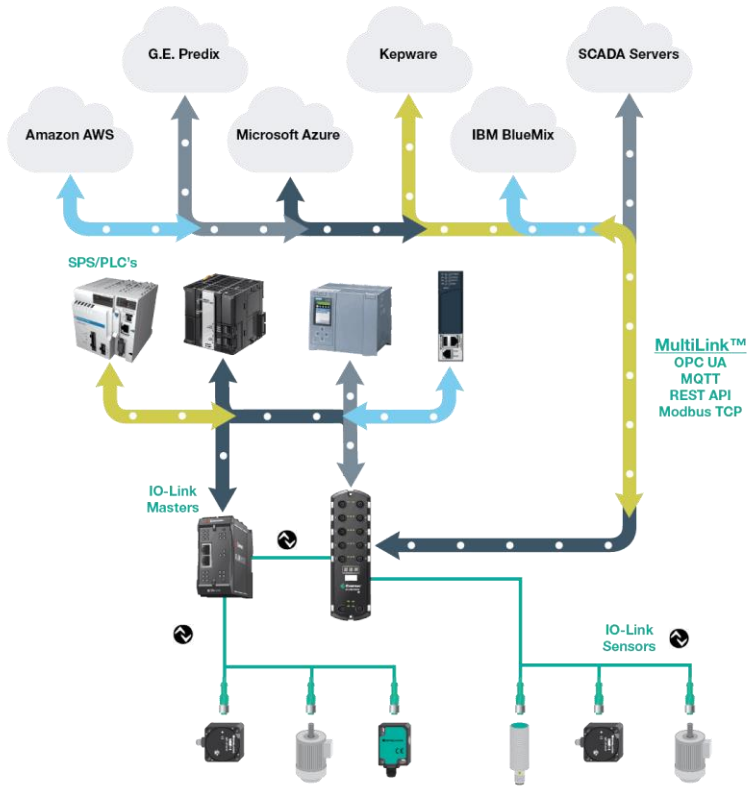
1. **MultiLink™** - Allows for communication with Ethernet/IP **or** PROFINET/IO and **SIMULTANEOUSLY:**
 - *OPC UA, MQTT, Modbus TCP*
2. IP67 and DIN-Rail options for Masters
3. All Ports Configurable (IO-Link, DI, DO)
4. Class 1 and 3 Ethernet/IP supported
 - ***Do not have to upgrade older PLC's, supports Micrologix, SLC, PLC-5***
5. Advanced IO-Link functionality and Block Backup

MultiLink™ - Simultaneously Provides IO-Link device Access to Multiple Controllers



P+F MultiLink™ technology allows our IO-Link Masters to simultaneously provide sensor Process data to multiple control platforms:

- **ICE 2** = EtherNet/IP
- **ICE 3** = Profinet
- **Both ICE2/3 include OPC UA, Modbus TCP, MQTT**



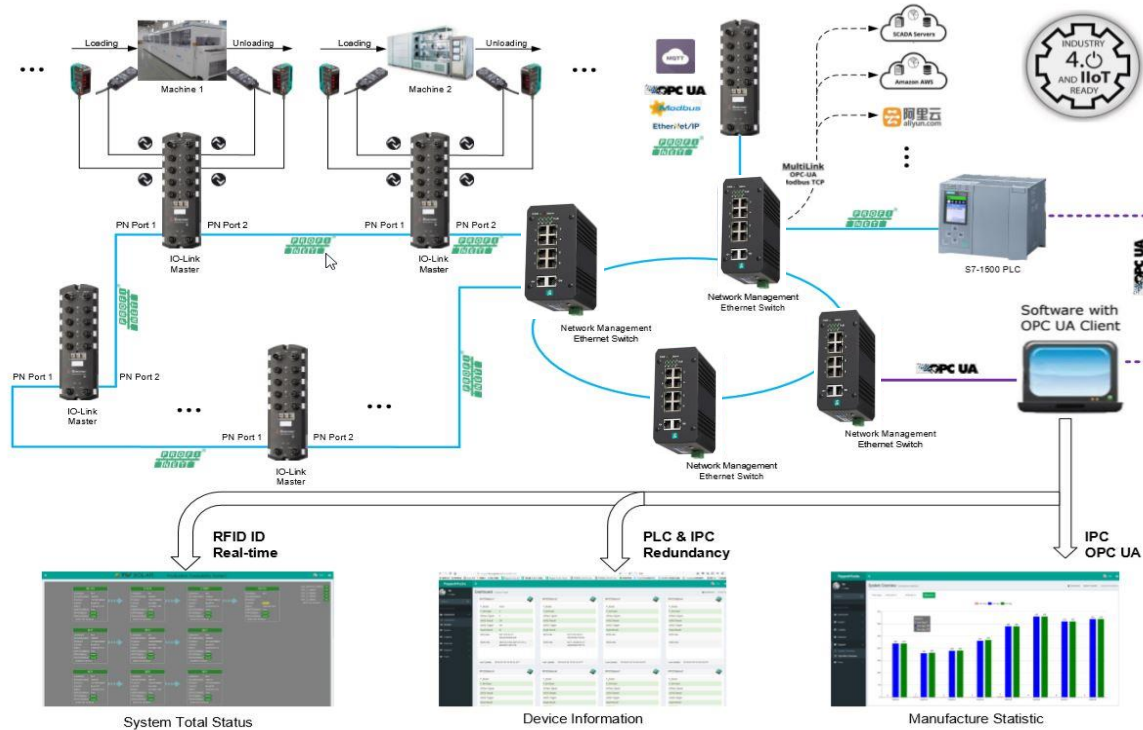
SCADA/Cloud Systems Layer

SPS/PLC Control Layer

Connectivity Field IO Layer

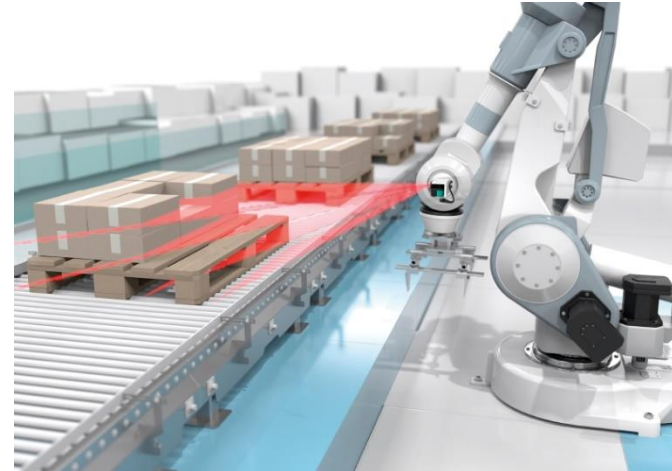


Application- Machine Builder/OEM



Application: Robotic End of Arm Tooling

- laser scanners (R2000 family) and two ICE2 IOLM used to develop information about the interaction with picking target and robotic arm/tooling
- 3D cameras could not be used because of the range
- Opted for IO-Link because the protocol interface is fast, efficient and offers a high density



DeviceMaster® ICDM PPlatform Serial to Ethernet Gateways

Configuration Options-

- EtherNet/IP or Profinet to serial, Modbus TCP or remote Modbus slave devices
- EtherNet/IP or Profinet controllers to a wide variety of Modbus masters
- Modbus masters to other Modbus masters, and Modbus slaves to other slaves
- Modbus masters to serial, Modbus TCP or remote serial slaves

- Modbus concentrator lessons the load on Modbus and/or EtherNet/IP controllers
- Quickly diagnose problems with System Snapshot
- Backup/Restore configuration feature




Industrial Gateways



Supported Protocols and Availability											
Industrial Ethernet Gateways	ICDM-RX/TCP-DB9/RJ45-PM	ICDM-RX/TCP-DB9/RJ45-DIN	ICDM-RX/TCP-ST/RJ45-DIN	ICDM-RX/TCP-2ST/RJ45-DIN	ICDM-RX/TCP-2DB9/RJ45-DIN	ICDM-RX/TCP-4DB9/2RJ45-DIN	ICDM-RX/TCP-4DB9/2RJ45-PM	ICDM-RX/TCP-8DB9/2RJ45-PM	ICDM-RX/TCP-16RJ45/RJ45-RM	ICDM-RX/TCP-16DB9/RJ45-RM	ICDM-RX/TCP-32RJ45/2RJ45-RM
EtherNet/IP™	ICDM-RX/EN-DB9/RJ45-PM	ICDM-RX/TCP-DB9/RJ45-DIN	ICDM-RX/EN-ST/RJ45-DIN	ICDM-RX/EN-2ST/RJ45-DIN	ICDM-RX/EN-2DB9/RJ45-DIN	ICDM-RX/EN-4DB9/2RJ45-DIN	N/A	N/A	N/A	N/A	N/A
PROFINET IO	ICDM-RX/PN-DB9/RJ45-PM	ICDM-RX/PN-DB9/RJ45-DIN	ICDM-RX/PN-ST/RJ45-DIN	ICDM-RX/PN-2ST/RJ45-DIN	ICDM-RX/PN-2DB9/RJ45-DIN	ICDM-RX/PN-4DB9/2RJ45-DIN	N/A	N/A	N/A	N/A	N/A
MODBUS TCP	ICDM-RX/MOD-DB9/RJ45-PM	ICDM-RX/MOD-DB9/RJ45-DIN	ICDM-RX/MOD-ST/RJ45-DIN	ICDM-RX/MOD-2ST/RJ45-DIN	ICDM-RX/MOD-2DB9/RJ45-DIN	ICDM-RX/MOD-4DB9/2RJ45-DIN	N/A	N/A	N/A	N/A	N/A
EtherNet/IP™ to MODBUS	ICDM-RX/EN1-DB9/RJ45-PM	ICDM-RX/EN1-DB9/RJ45-DIN	ICDM-RX/EN1-ST/RJ45-DIN	ICDM-RX/EN1-2ST/RJ45-DIN	ICDM-RX/EN1-2DB9/RJ45-DIN	ICDM-RX/EN1-4DB9/2RJ45-DIN	N/A	N/A	N/A	N/A	N/A
PROFINET IO to MODBUS	ICDM-RX/PN1-DB9/RJ45-PM	ICDM-RX/PN1-DB9/RJ45-DIN	ICDM-RX/PN1-ST/RJ45-DIN	ICDM-RX/PN1-2ST/RJ45-DIN	ICDM-RX/PN1-2DB9/RJ45-DIN	ICDM-RX/PN1-4DB9/2RJ45-DIN	N/A	N/A	N/A	N/A	N/A
Hardware											
Number of Ports: 10/100BASE-TX	1	1	1	1	1	2	2	2	1	1	1
Number of Serial Ports	1 x RS232/422/485	1 x RS232/422/485	1 x RS232/422/485	2 x RS-232/422/485	2 x RS-232/422/485	4 x RS-232/422/485	4 x RS-232/422/485	8 x RS-232/422/485	16 x RS-232/422/485	16 x RS-232/422/485	32 x RS-232/422/485

 Pepperl+Fuchs availability

 Pepperl+Fuchs availability coming soon

RocketLinx Models



Item no.	Type code	Description	Availability
70104880	ICRL-U-5RJ45-DIN	RocketLinx unmanaged 5-port switch, extended temperature	✓
70104881	ICRL-U-8RJ45-DIN	RocketLinx unmanaged 8-port switch, extended temperature	✓
70114052	ICRL-U-5RJ45-DIN-NT	RocketLinx unmanaged 5-port switch	✓
70114053	ICRL-U-8RJ45-DIN-NT	RocketLinx Unmanaged 8-Port switch	✓
70114054	ICRL-U-5RJ45-G-DIN	RocketLinx unmanaged 5-port gigabit switch, extended temperature	✓
70114055	ICRL-U-4RJ45/SFP-G-DIN	RocketLinx unmanaged 4-port +1 SFP gigabit switch, extended temperature	✓
70114058	ICRL-M-8RJ45/4SFP-G-DIN	RocketLinx managed 8-port + 4 SFP gigabit switch, extended temperature	✓
70114060	ICRL-M-16RJ45/4CP-G-DIN	RocketLinx managed 16-port + 4 RJ45/SFP combo gigabit switch, extended temperature	✓

RocketLinx Model Comparison



Switch Models

Type code	ICRL-U-5RJ45-DIN	ICRL-U-5RJ45-DIN-NT	ICRL-U-8RJ45-DIN	ICRL-U-8RJ45-DIN-NT	ICRL-U-5RJ45-G-DIN	ICRL-U-4RJ45/SFP-G-DIN	ICRL-M-8RJ45/4SFP-G-DIN	ICRL-M-16RJ45/4CP-G-DIN
Item number	70104880	70114052	70104881	70114053	70114054	70114055	70114058	70114060
	Unmanaged	Unmanaged	Unmanaged	Unmanaged	Unmanaged	Unmanaged	Managed	Managed
Communication								
Fast Ethernet ports	5	5	8	8	N/A	N/A	N/A	N/A
Gigabit ports	N/A	N/A	N/A	N/A	5	4	8	16
Gigabit SFP fiber ports	N/A	N/A	N/A	N/A	N/A	1	4	N/A
Gigabit/fiber combo ports	N/A	N/A	N/A	N/A	N/A	N/A	N/A	4
Physical								
Housing	Aluminum	Aluminum	Aluminum	Aluminum	Steel	Steel	Aluminum	Aluminum
Mounting style	DIN-Rail	DIN-Rail	DIN-Rail	DIN-Rail	DIN-Rail	DIN-Rail	DIN-Rail	DIN-Rail
Degree of protection	IP30	IP30	IP30	IP30	IP30	IP30	IP30	IP30
Power								
Input power	18-32 V DC	18-32 V DC	10-60 V DC	10-60 V DC	10-60 V DC	10-60 V DC	10-36 V DC	10-60 V DC
Dual power input	N/A	N/A	Yes	Yes	Yes	Yes	Yes	Yes
Alarm relay	Yes	Yes	Yes	Yes	Yes	Yes	Yes	Yes
Management								
CLI	N/A	N/A	N/A	N/A	N/A	N/A	Yes	Yes
Web	N/A	N/A	N/A	N/A	N/A	N/A	Yes	Yes
PortVision	N/A	N/A	N/A	N/A	N/A	N/A	Yes	Yes
Environment								
Operating temperature	-40 °C to 75 °C	-25 °C to 70 °C	-40 °C to 75 °C	-25 °C to 70 °C	-40 °C to 75 °C	-40 °C to 75 °C	-40 °C to 75 °C	-40 °C to 75 °C
Compliance								
C1D2	Yes	N/A	Yes	N/A	N/A	N/A	N/A	N/A
NEMA TS2	N/A	N/A	N/A	N/A	N/A	N/A	Yes	Yes
EN50121-4	N/A	N/A	N/A	N/A	Yes	Yes	Yes	Yes

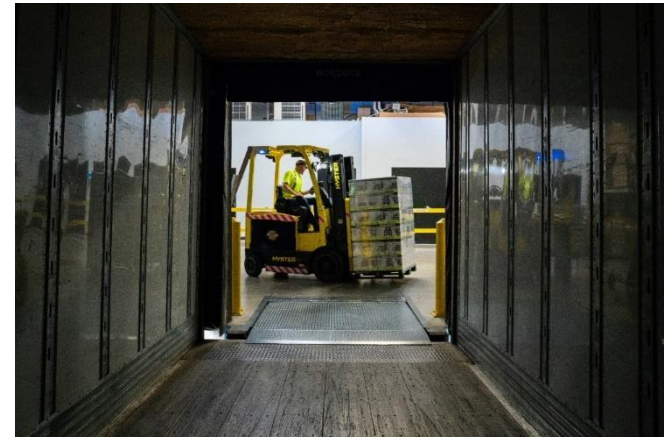
- Material Handling

Applications

Material handling involves equipment from conveyor belts to forklifts. Many of these devices rely on sensor data and are network controlled. The RocketLinx line of switches is a good fit for reliably enabling the network connectivity of this equipment.

Key Criteria:

- Wide operating temperature ranges
- Fiber connectivity for long cable runs
- Ethernet Wifi component for Mobility
- No moving parts make switches more resilient to shock and vibration
- Redundant ring protocol enables 20 ms or less recovery time when a link goes down
- IO-Link for RFID / Barcode / Sensors on forklift



- Wastewater Treatment

Applications

Wastewater treatment relies on sensor data to determine the waste levels in treated water, the number of treatment chemicals to use, and whether water has been treated to required standards. All collected sensor information must be transmitted to PLCs and HMIs.

Key Criteria:

- Wide operational temperature range
- Modbus devices & Network redundancy capabilities
- Modbus HMI's, SCADA and PLCs
- Network error reporting capabilities (could indicate network link or sensor damage)
- Fiber connectivity for long cable runs





Dennis Christensen

Contact:

dchristensen@us.pepperl-fuchs.com
+31 682 559 839 / +1 330 486 0001

Marcel Tibosch – Netherlands

Pepperl+Fuchs BV
Pettelaarpark 104
5216-PR 's Hertogenbosch
NL
+31 73 750 71 07