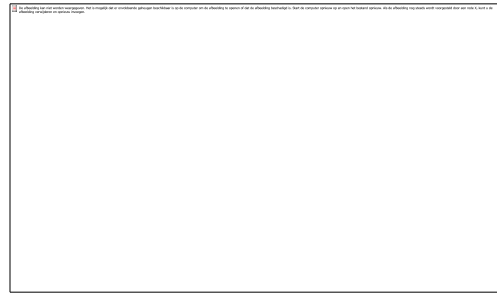




ESPEC Network Solution

How to communicate with your testchamber

Peter Hielkema



25 years supplier of ESPEC Environmental test chambers



- Temp./Hum. Chambers
- Walk-in Chambers
- Thermal Shock Chambers
- Burn-in
- HAST
- Clean Ovens

How to communicate with your test chamber?

History



Manual and local

Present



Automatic and www

WEB Manager

Remote monitoring/programming system
for test chambers



WEB Manager

Remote monitoring and operation

Real-time monitoring and programming (resetting/start & stop control) without using specific software.

Data logging & storage

Data logging of the chamber operation status, settings and measured data to user's PC.

Email alert for chamber troubles

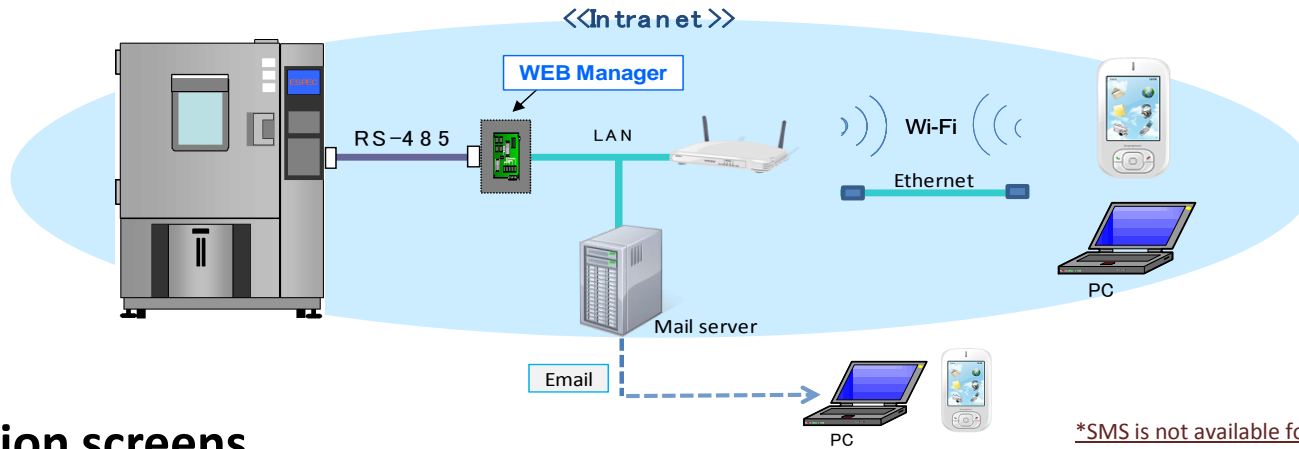
Dispatch emails to a remote terminal when trouble alarms are raised.

User password set according to access level

View and edit access to the Web Manager is restricted by 3 access levels to avoid misuse troubles.

WEB Manager (STD/TS)

System diagram



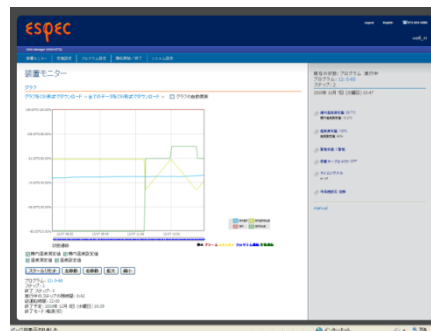
***ONE chamber requires ONE Web manager package to access the intranet.**

Operation screens

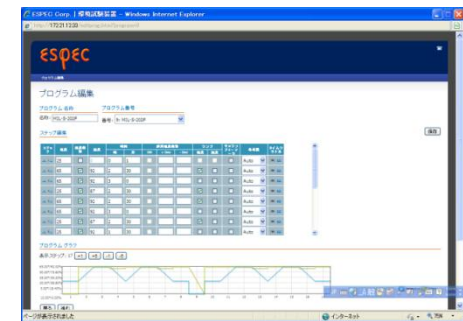
Main page



Monitoring screen



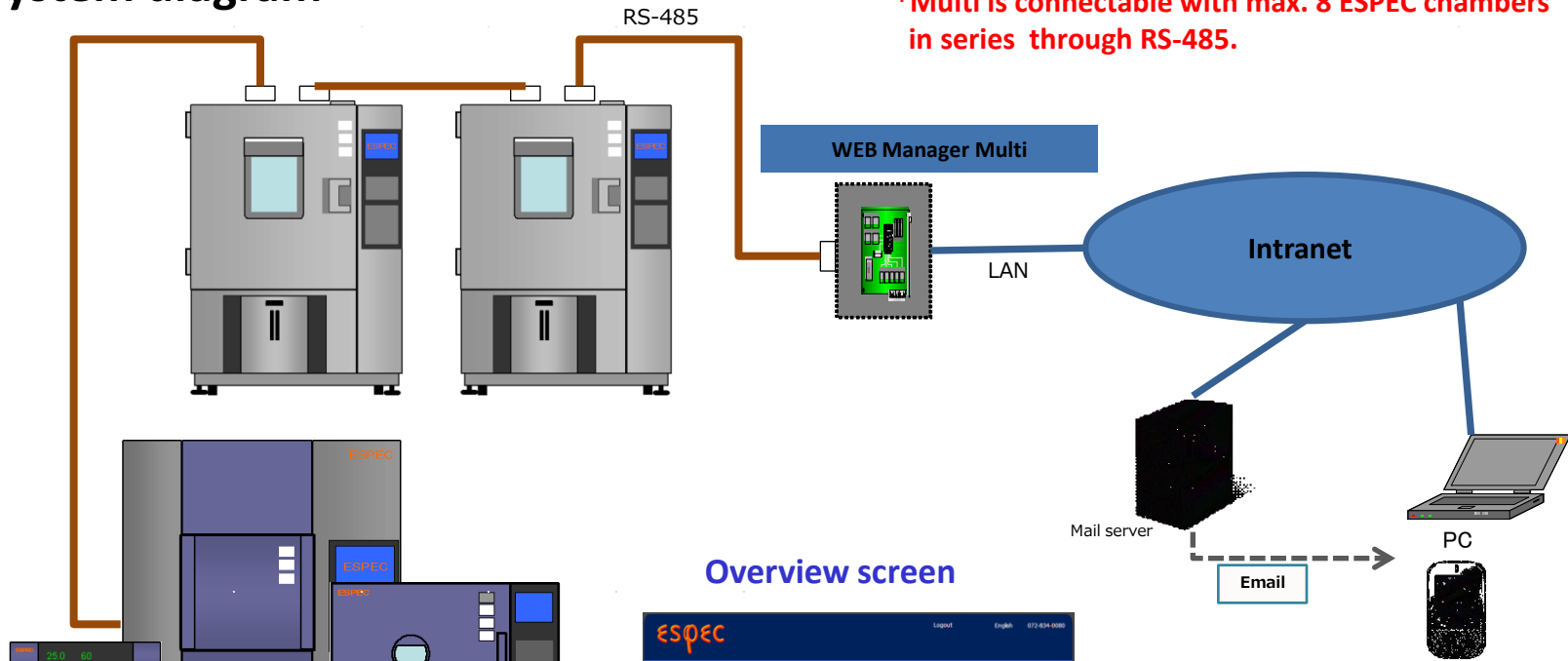
Programming screen



*SMS is not available for message transfer.

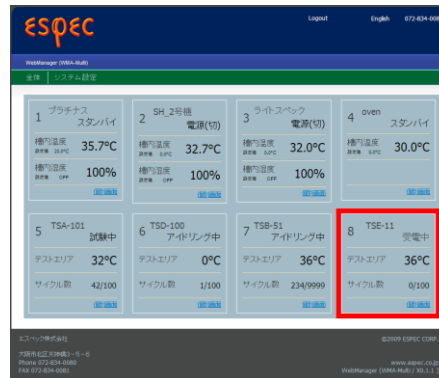
WEB Manager (Multi)

System diagram



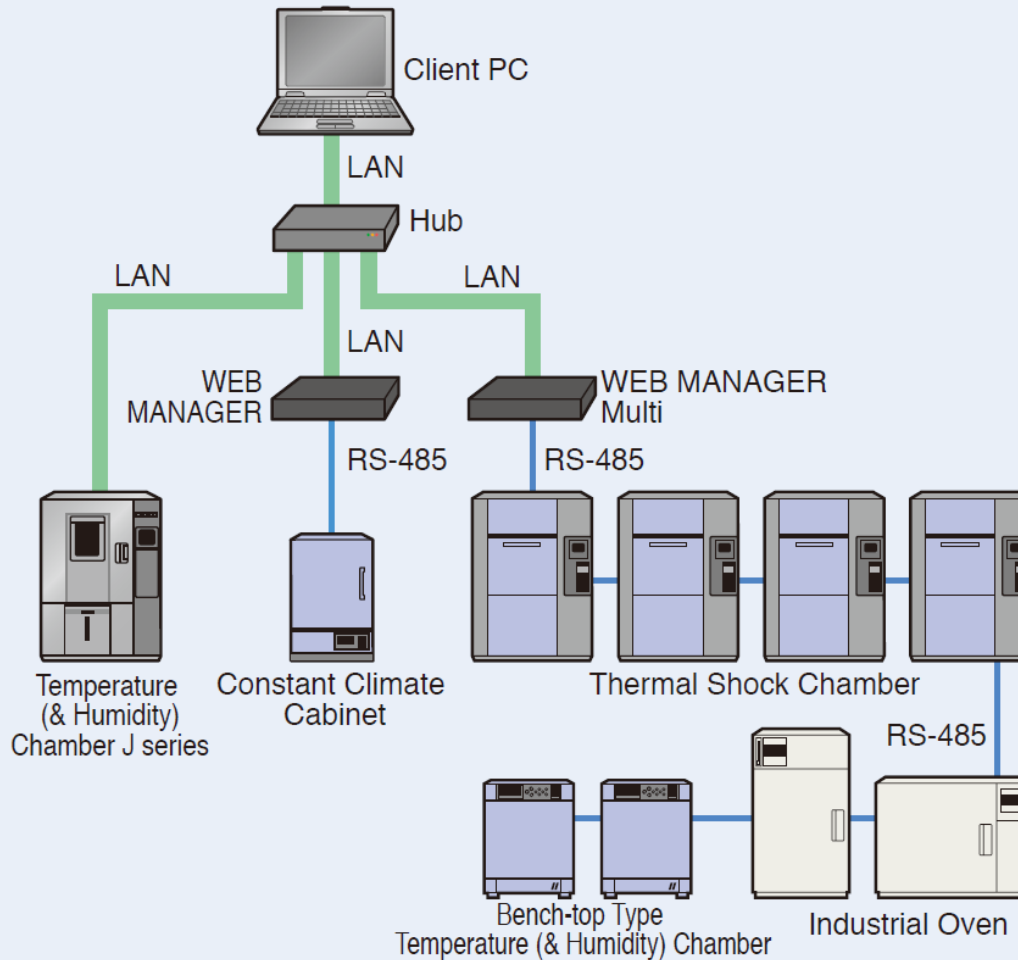
*Multi is connectable with max. 8 ESPEC chambers in series through RS-485.

Overview screen



WEB Manager

● Example of Connection



WEB Manager : Main Page

ESPEC SCP-220 Web Controller 111

Chamber Monitor | Constant Mode Setup | Program | Run/Stop | Setup

Main Page

Monitor

Check and monitor current chamber operation.

TEMP. HUM.

Constant Setup

Set your chamber to run a single condition.

°C

Program Setup

Create a program for your chamber.

°C

Run/Stop Operation

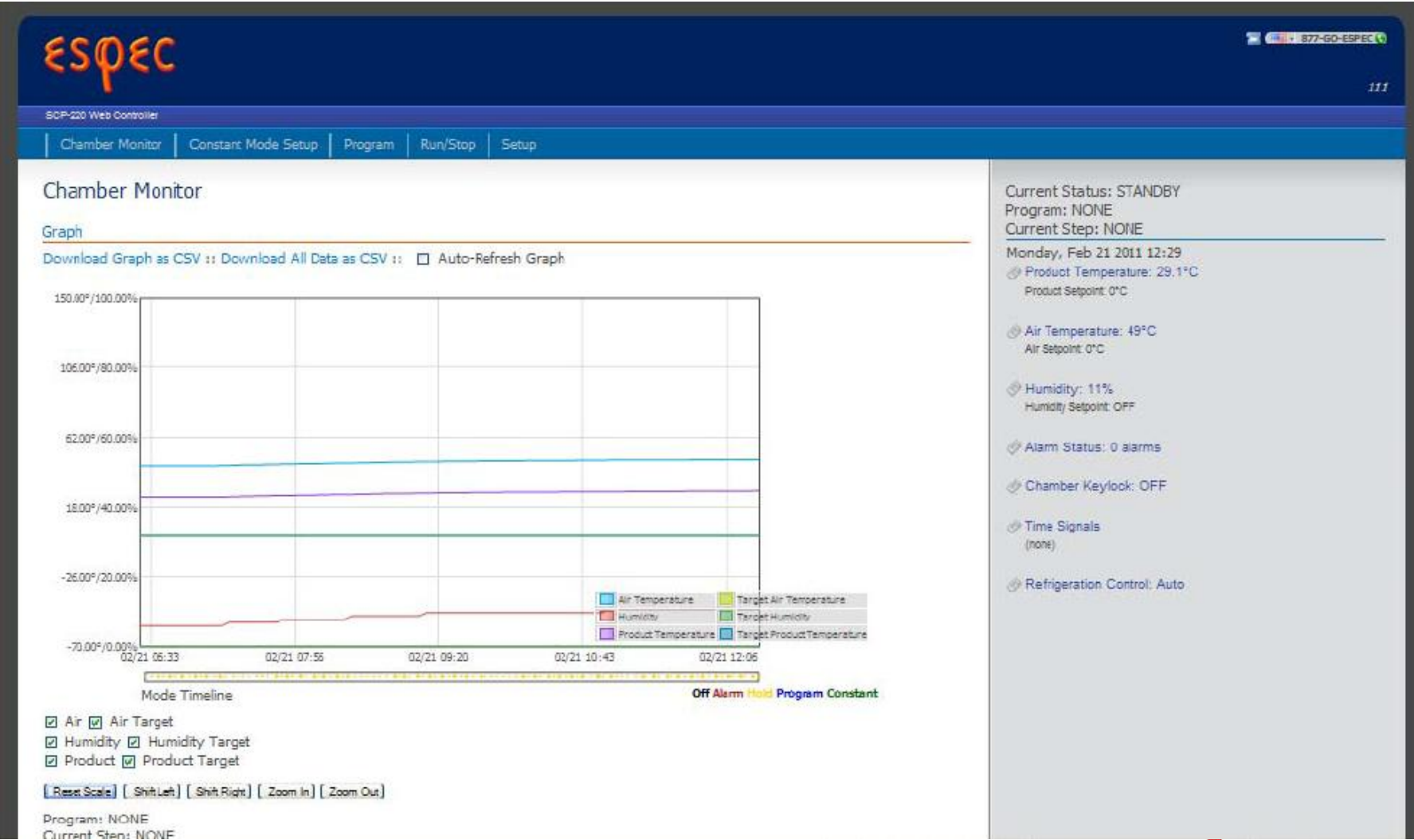
This is where you go to turn the chamber on and off, as well as start programs.

Current Status: STANDBY
Program: NONE
Current Step: NONE

Monday, Feb 21 2011 12:23

- Product Temperature: 29.1°C
Product Setpoint: 0°C
- Air Temperature: 48.9°C
Air Setpoint: 0°C
- Humidity: 11%
Humidity Setpoint: OFF
- Alarm Status: 0 alarms
- Chamber Keylock: OFF
- Time Signals (none)
- Refrigeration Control: Auto

WEB Manager : Monitoring Page



WEB Manager : Constant Mode Setup

ESPEC
877-GO-ESPEC

BCP-220 Web Controller

Chamber Monitor
Constant Mode Setup
Program
Run/Stop
Setup

Constant Mode Setup

Temperature

Product Control	
On: <input type="radio"/>	Off: <input type="radio"/>
Setpoints:	20 °C
Deviation Limit	
+ 1	- 1

Allowable air temperature deviation from product temperature set point.

Humidity

Humidity Control	
On: <input type="radio"/>	Off: <input type="radio"/>
Setpoints:	95 %RH

Other

Refrigeration Control
100%
Time Signals
<input type="checkbox"/> DMM
<input type="checkbox"/> tag2
<input type="checkbox"/> Signal 3
<input type="checkbox"/> Signal 4
<input checked="" type="checkbox"/> undefined
<input type="checkbox"/> testf
<input type="checkbox"/> Signal 7

Time signal names can be changed from the [Setup Page](#)

Apply Changes

[Submit]

Current Status: STANDBY
Program: NONE
Current Step: NONE

Monday, Feb 21 2011 12:31

- Product Temperature: 29.1°C
Product Setpoint: 0°C
- Air Temperature: 49°C
Air Setpoint: 0°C
- Humidity: 11%
Humidity Setpoint: OFF
- Alarm Status: 0 alarms
- Chamber Keylock: OFF
- Time Signals
(none)
- Refrigeration Control: Auto

Plot showcase 2013

TESTEQUIPMENT B.V.
 Temperature (& humidity)
 chambers

11

WEB Manager : Program Setup

ESPEC 111

DGP-220 Web Controller

Chamber Monitor | Constant Mode Setup | **Program** | Run/Stop | Setup

Program Setup

Create New Program [Send Program to Controller](#)

[New Program] [Browse...]

Slot 1 [v]

[Send Program]

Open From Controller

No.	Name	Steps No.	Name	Steps No.	Name	Steps
1	NEWPROGRAM9 ::	5	BRAD_VERIFY ::	5	MIL-S-202F ::	17
2	DAVESTEST2 ::	7	PAUSEMIDT ::	3	MIL-SB10C1 ::	5
3	KLIMATEST ::	4	NEWPROGRAM ::	2	MIL-SB10C2 ::	10
4	MIL-SB10TWO ::	5	CRAZY ::	5	MIL-SB10C3 ::	12
5	TANGO ::	12	EDIT1 ::	1	MIL-SB10C4 ::	6
6	DAVETEST1 ::	6	NEWPROGRAM99 ::	5	MIL-SB10C5 ::	10
7	DAVE1 ::	8	TANGO ::	12	MIL-SB10E1 ::	5
8	JAYTEST ::	5	KLIMATEST ::	4	MIL-SB10E2 ::	7
9	DAVE1 ::	8	NEWPROGRAM2 ::	5	MIL-SB10E3 ::	5
10	FROMJAPAN ::	4	EDITATAPAN ::	6	TEST PROGRAM ::	4

Current Status: STANDBY
 Program: NONE
 Current Step: NONE

Monday, Feb 21 2011 12:32

- Product Temperature: 29.1°C
Product Setpoint: 0°C
- Air Temperature: 49°C
Air Setpoint: 0°C
- Humidity: 11%
Humidity Setpoint: OFF
- Alarm Status: 0 alarms
- Chamber Keylock: OFF
- Time Signals
(none)
- Refrigeration Control: Auto

WEB Manager : Start (Run) /Stop

The screenshot displays the ESPEC Web Manager interface for a chamber. The top navigation bar includes the ESPEC logo, language options (日本語, 한국어, 简体中文, 繁體中文), and a Logout link. Below this is a secondary navigation bar with tabs for Chamber Monitor, Constant Mode Setup, Program, Run/Stop, and Setup. The main content area is titled "Run/Stop" and features three operational modes: Stop (indicated by a red light), Constant (indicated by a grey light), and Program (indicated by a grey light). The Program mode is currently selected, showing a "Run Program Mode" button, a dropdown menu for "Program" set to "1: PGM-01", and a dropdown for "Step Number" set to "Step 1". Below these are "Pause", "Continue", and "Next Step" buttons. The "Constant" mode section shows "Current Settings" with a Temp Setpoint of 0.0°C and notes that Humidity and Product Temp Ctrl options are not installed. On the right side, a status panel displays "Current status: STOP", "Program: ---", "Current Step: ---", and the date/time "Monday, 21 May 2012 14:10". It also lists sensor readings: Temp PV: 39.6°C and Temp Setpoint: 23.0°C, and system status: Alarm Status: 0 alarms, Chamber Keylock: OFF, Time Signals: All OFF, and Refrigeration Control: AUTO. The footer of the interface includes "ESPEC CORP.", "©2009 ESPEC CORP.", and the website "www.espec.co.jp". The browser's address bar shows "Web Manager (WMA-STD / v1.2.0B2)".

ページが表示されました

インターネット 100%

WEB Manager : Multi / Overview

The screenshot displays the ESPEC Web Manager (WMA-Multi) interface. At the top, the ESPEC logo is on the left, and 'Logout', 'Japanese', and '81-72-834-0080' are on the right. Below the logo, 'WebManager (WMA-Multi)' is written. A navigation bar shows 'Main' and 'Setup'. The main content area is a grid of eight chamber status cards. Chamber 8 (TSE-11) is highlighted with a red border. Each card shows the chamber name, status, air temperature (with target), air humidity (with target), and a 'Chamber Page' link.

Chamber ID	Chamber Name	Status	Air Temperature (°C)	Air Humidity (%)	Test Area (°C)	Cycles
1	Platinous	STANDBY	35.0 (Target: 20.0)	100 (Target: OFF)	-	-
2	SH	STANDBY	33.3 (Target: 0.0)	100 (Target: OFF)	-	-
3	light spec	STANDBY	32.4 (Target: 0.0)	100 (Target: OFF)	-	-
4	oven	STANDBY	30.0 (Target: 0.0)	-	-	-
5	TSA-101	TEST	-	-	35	41/100
6	TSD-100	POWER-OFF	-	-	0	1/100
7	TSB-51	STANDBY	-	-	36	234/9999
8	TSE-11	TEST	-	-	34	1/100

ESPEC CORP. ©2009 ESPEC CORP.
3-5-6 Tenjinbashi Kitaku Osaka 530-8550
Phone 81-72-834-0080
FAX 81-72-834-0081
www.espec.co.jp
WebManager (WMA-Multi / X0.1.1)

Web Integrated Network

Remote monitoring/programming system
for test chambers and other equipment

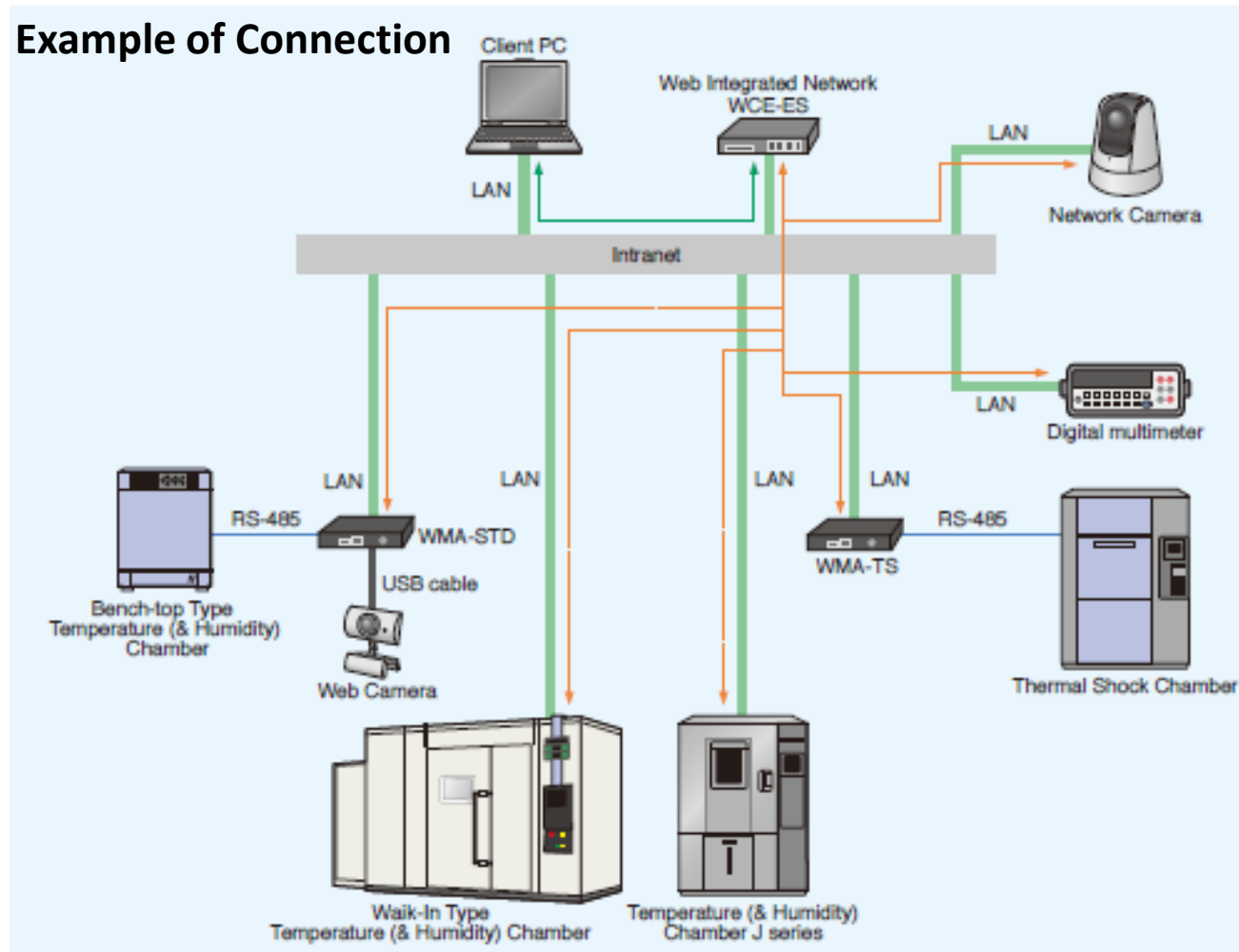


Web Integrated Network

- A device that allow the customer to **manage all his equipment, from a single screen.**
- It comes in addition of the web manager, or the embedded web manager, or the web-Multi, or just as is.
- It connects with an Ethernet cable, or a converter, so virtually any device with an Ethernet port or a RS-485 port can be connected.
- Even chamber from other manufacturers, but also measuring devices, cameras, etc. can be connected and displayed from the web browser.
- **Up to 100 devices can be connected.**

Web Integrated Network

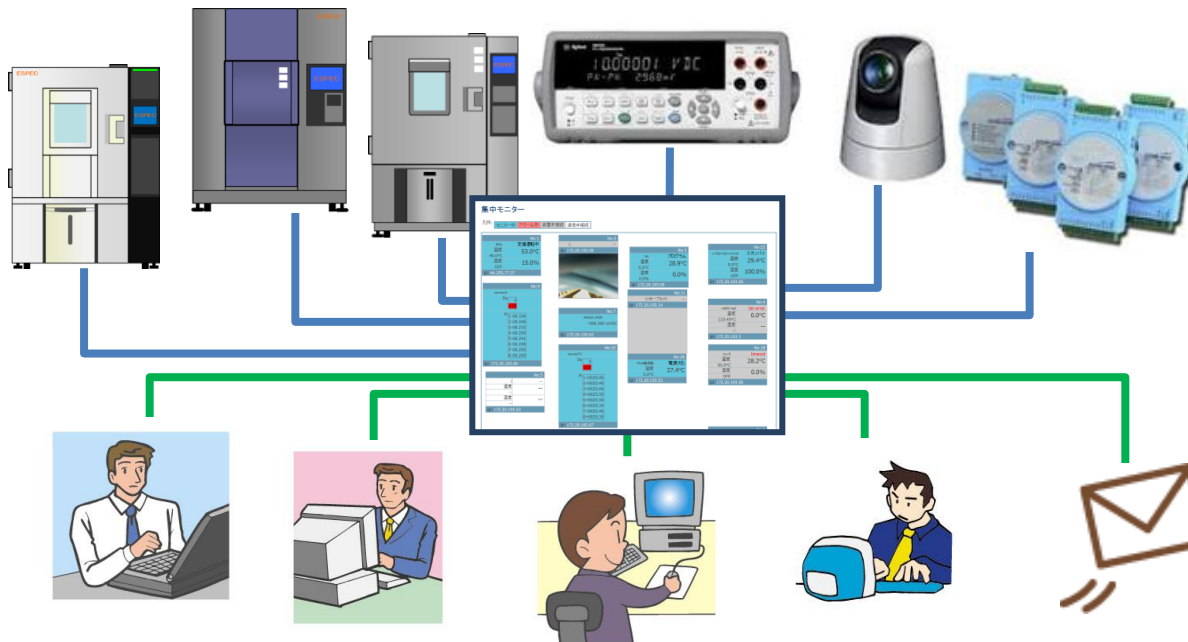
Example of Connection



Web Integrated Network

Sharing testing information in complete safety

- Possible to monitor from a single screen your environmental test equipment, measuring instruments and even network-compatible camera.
- All data are available from the cloud, the same data can be seen and used by multiple users.

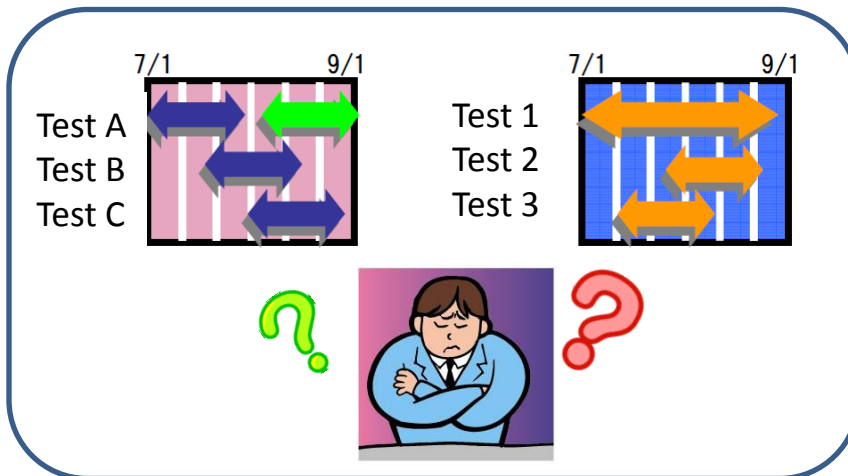


Web Integrated Network

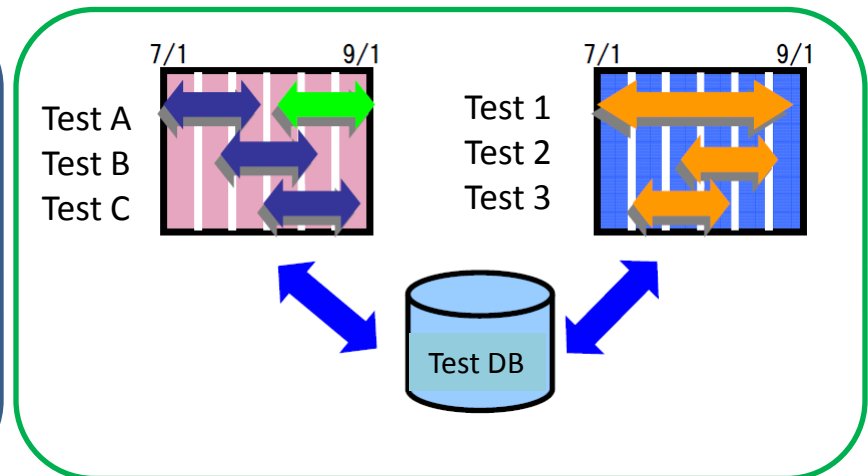
Tedious management is over!

- Possible to switch between the display of test scheduler or equipment scheduler.
- Gathered in a common database, the test schedule, equipment and instruments' schedules are linked together.
- It is also possible to set an email alert to be sent before testing completion.

<before>



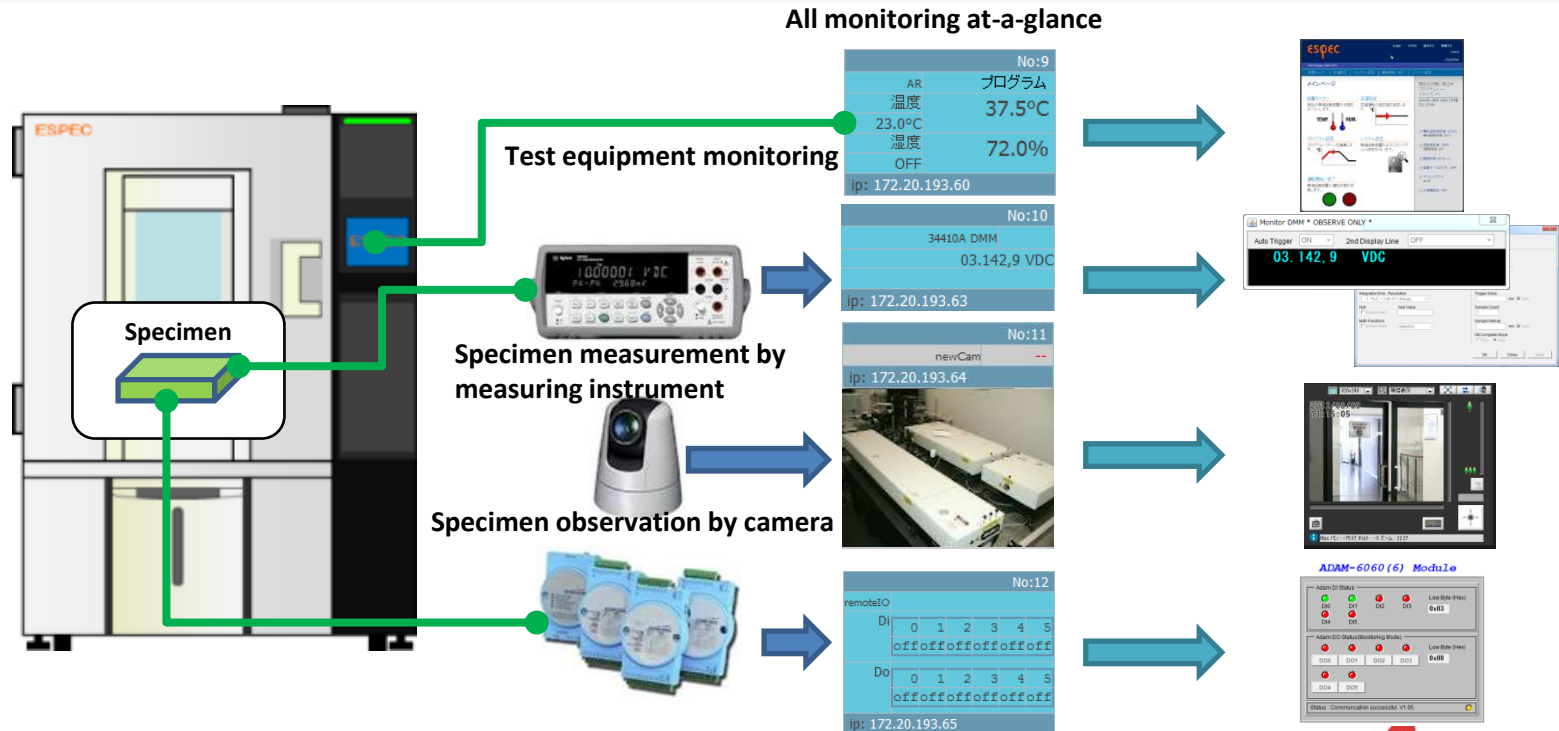
<after>



Web Integrated Network

The structure of an evaluation system in a box!

You can perform evaluation with a single and simple system. Because you can connect environmental test equipment, but also various measuring instruments, this system can be used as a simple measurement system even for our customers that do not need such an extensive system structure.



Web Integrated Network

Easy installation at a low cost!

All the difficult settings have been made by ESPEC already!

- Our cloud structure is already prepared on a small server, so just connect your device to your local network!
- You can add equipment to connect, or change the system configuration, it is very simple!
- You can use only the necessary equipment connected to the Web integrated network even without connecting it to the intranet.

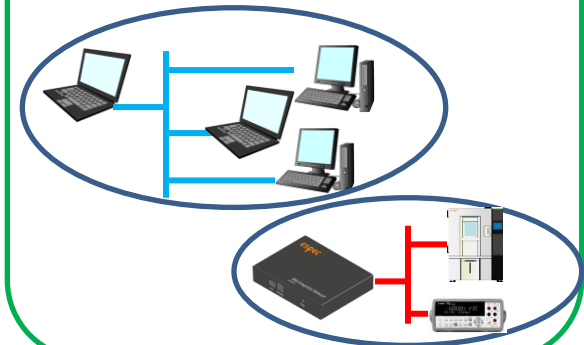
Just connect to an Ethernet cable!
No difficult settings required!



Simple system configuration!



Can be used even without intranet connection!



Thank you for your attention!

Contact:

HIELKEMA TESTEQUIPMENT B.V.

Phone: +31 4132-55243

Fax: +31 413 - 25 52 89

E-mail: peter@hielkematest.nl

Web: www.hielkematest.nl