

Thales Netherlands Environmental Competence Centre

www.thales-ecc.nl

November 2014



Laboratory for
Electromagnetic Compatibility
Mechanic Test
Climatic Test



© THALES NEDERLAND B.V. AND/OR ITS SUPPLIERS

THIS INFORMATION CARRIER CONTAINS PROPRIETARY INFORMATION WHICH SHALL NOT BE USED, REPRODUCED OR DISCLOSED TO THIRD PARTIES WITHOUT PRIOR WRITTEN AUTHORIZATION BY THALES NEDERLAND B.V. AND/OR ITS SUPPLIERS, AS APPLICABLE.

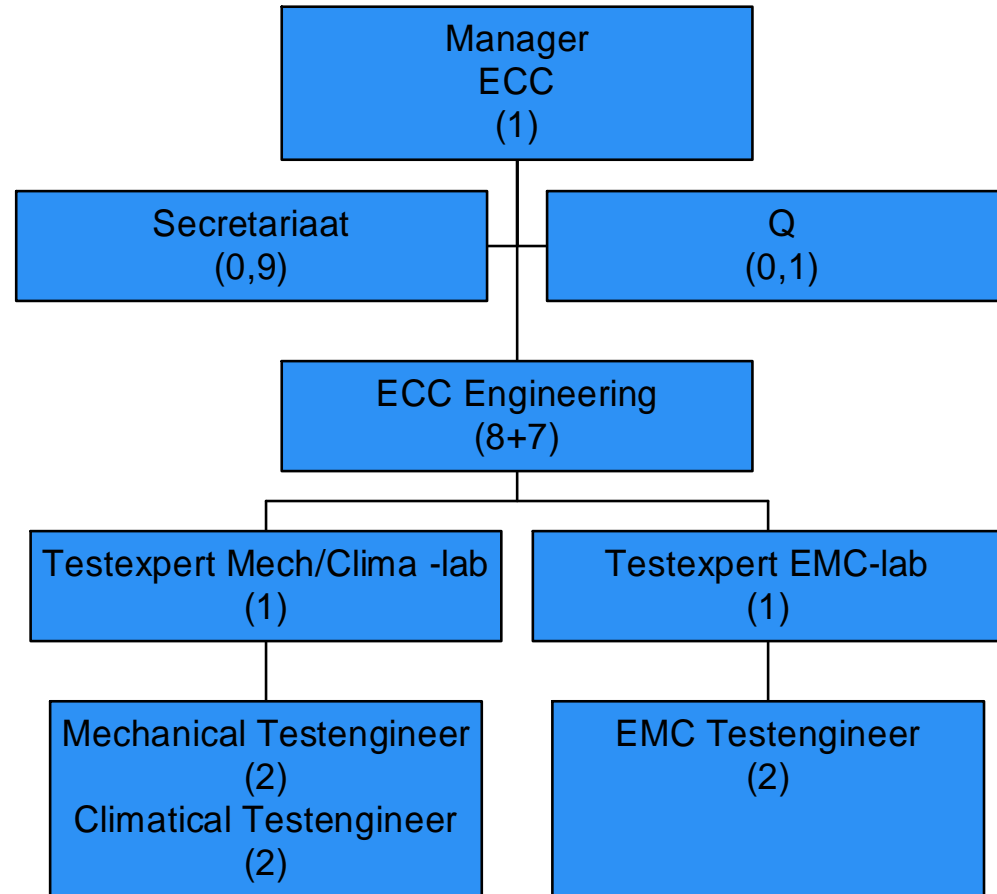


ECC is

Strategic part of the design process

Specialists and test facilities for Mechanics, Climate and EMC which are available for both THALES and external customers

ECC mission: Ensure that THALES systems function properly in the environments for which these have been designed





■ Temperature, Humidity, Salt



■ Shock & Vibration



© THALES NEDERLAND B.V. AND/OR ITS SUPPLIERS. Subject to restrictive legend on title page

March. Environmental Competence Centre



© THALES NEDERLAND B.V. AND/OR ITS SUPPLIERS. Subject to restrictive legend on title page

Anechoic Chambers



Reverberation Chambers



March. Environmental Competence Centre

- Engineering and consultancy
 - Decomposition of environmental specifications
 - Engineering tests
 - Pre-compliance testing - quick scan
 - On site trouble shooting
- Qualification
 - Verification of a product w.r.t. requirements
 - EMC-Directive - domestic and industrial products
- Education
 - Awareness
 - Dedicated Courses, also on-site



- EMC measurements at many levels - IC up to large systems
- ISO 17025 accredited by Dutch RVA
- CE-marking - by means of testing
- Familiar with classification by Lloyd's, DNV etc.
- MIL-STD
- DEF-STAN
- DO-160



REG.No.L240

Environmental Competence Centre



End of Presentation

© THALES NEDERLAND B.V. AND/OR ITS SUPPLIERS

THIS INFORMATION CARRIER CONTAINS PROPRIETARY INFORMATION WHICH SHALL NOT BE USED, REPRODUCED OR DISCLOSED TO THIRD PARTIES WITHOUT PRIOR WRITTEN AUTHORIZATION BY THALES NEDERLAND B.V. AND/OR ITS SUPPLIERS, AS APPLICABLE.