



Broeden op Innovatie

Giel Bakker
Product Owner Autopack

Moba History



First egg grading machines, 1947



Mosterd Barneveld



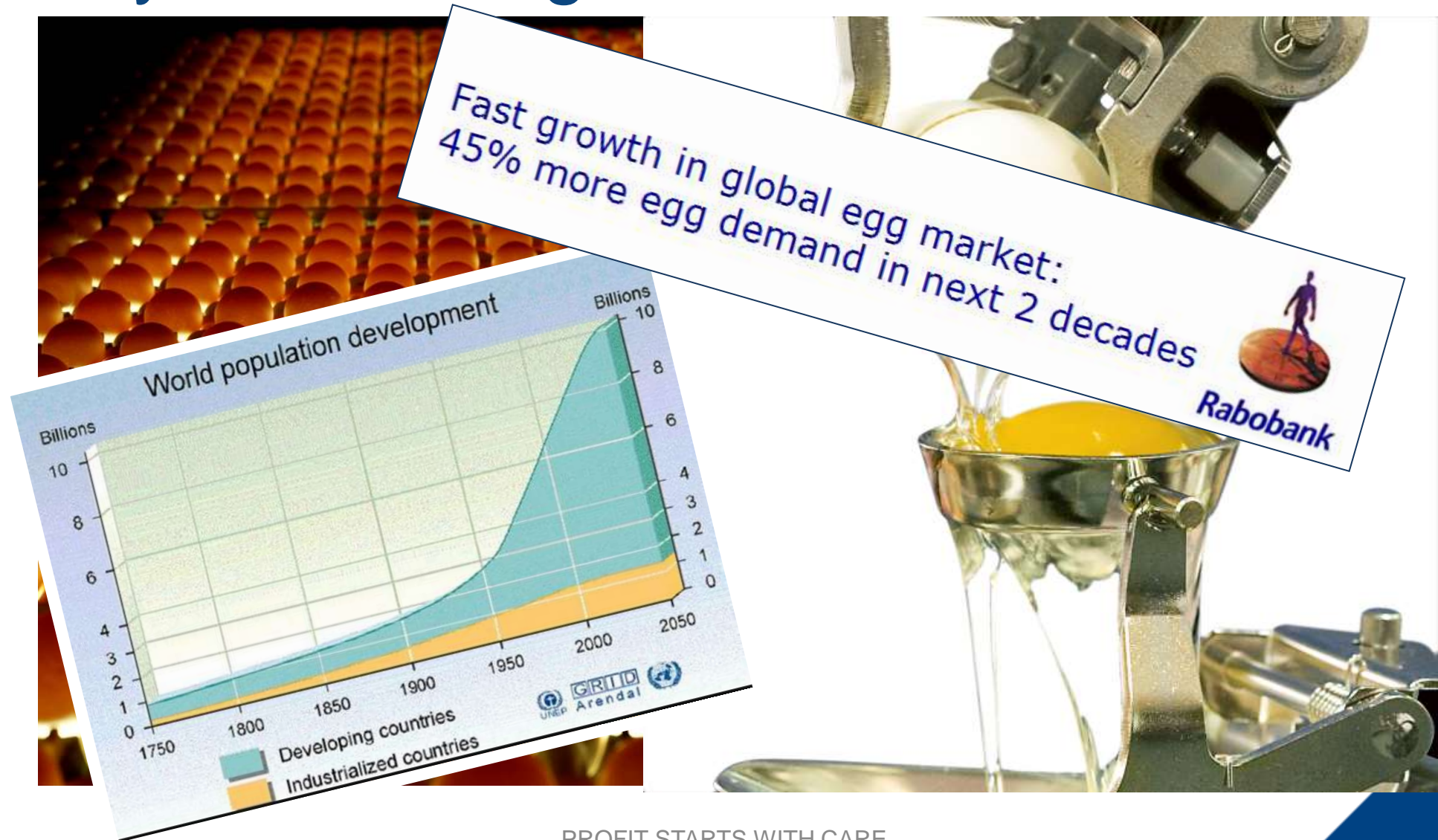
Start at present location
in 1950

Moba history



Today

Healthy market segment



Egg candling



Egg washing



DQY, China

2001: nothing

2002: 200.000 layers

2006: 1.2 mio layers

2009: 1.6 mio layers

德青源健康养殖生态园二期工程效果图



Brazil

2009: nothing
2010: 440.000 layers
2011: 1.3 mio layers

Turnover continue to rise

**Barneveldse
Krant.nl**

**Moba kondigt grootscheepse
verbouwing en recordomzet aan**



**Barneveldse fabrikant is
wereldleider in sorteren van eieren**

Het Barneveldse bedrijf Moba breekt dit jaar voor het eerst door de omzetgrens van 200 miljoen euro. De grootste fabrikant van eiersorteermachines ter wereld blijft maar groeien. En het einde is nog lang niet in zicht.

fd.

**Machinebouwer Moba breekt door
omzetgrens van €200 mln**

de Volkskrant

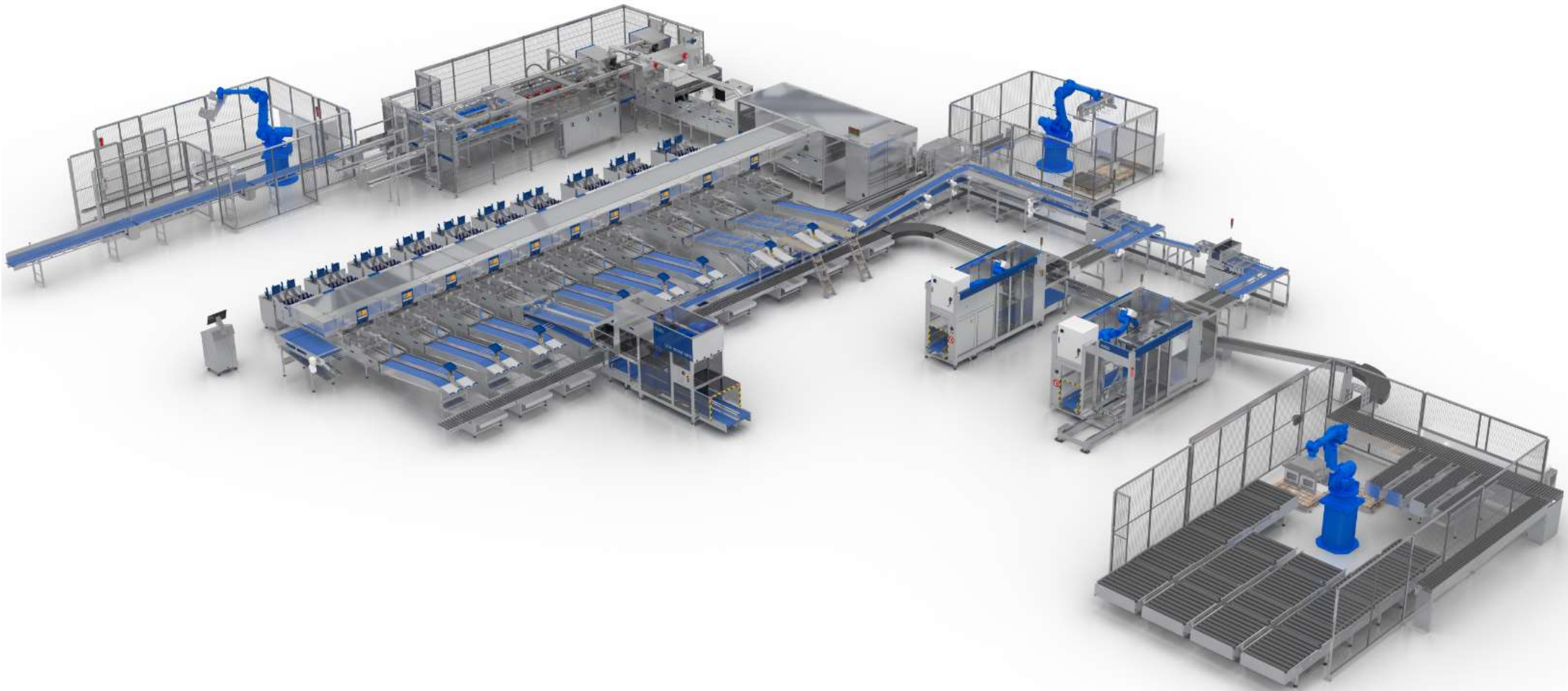
Questions for today

- Which technology made MOBA market leader? And which innovations will keep us there?
- What is the impact of 6% growth each year on a (R&D) organization?

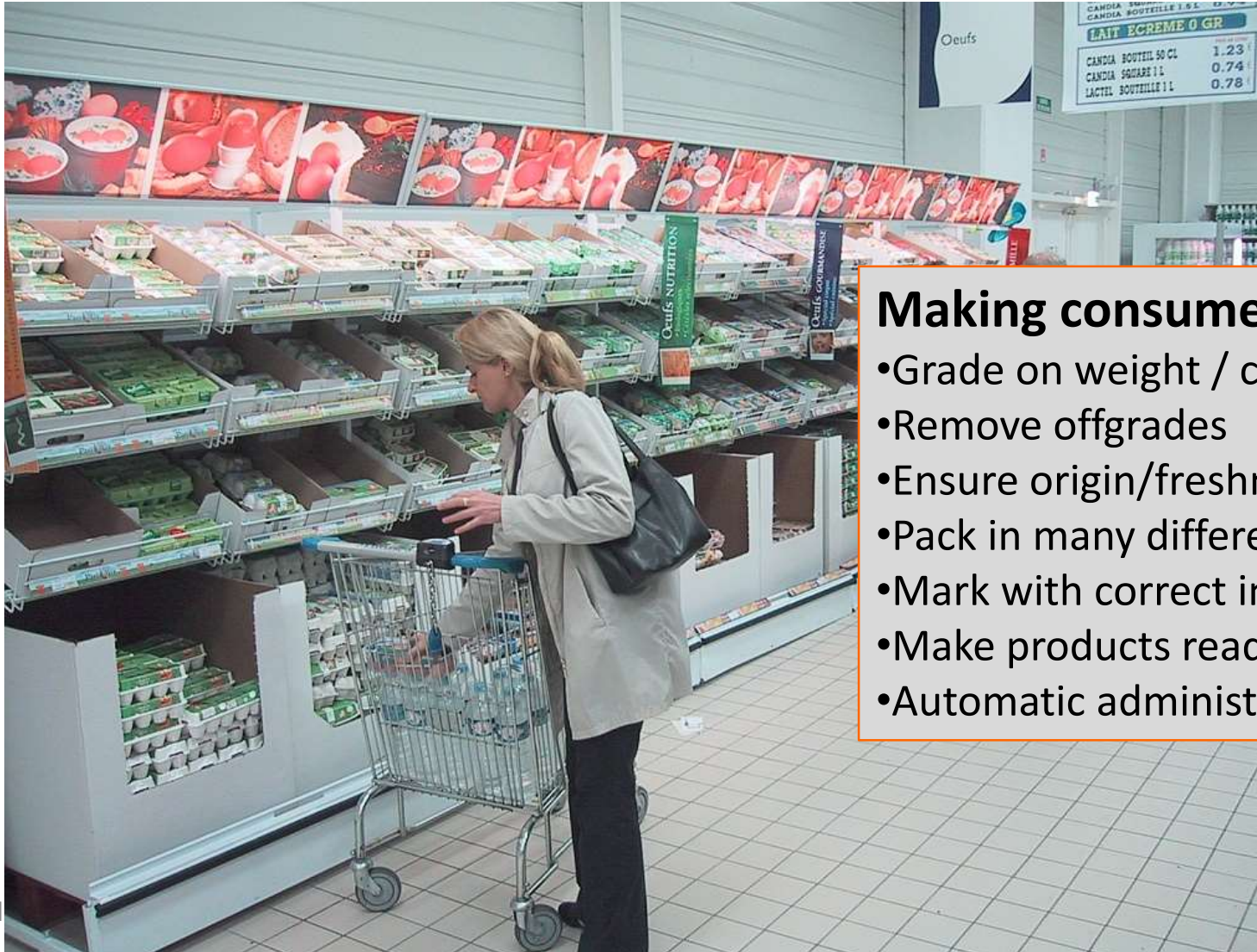
Questions for today

- **Which technology made MOBA market leader?** And which innovations will keep us there?
- What is the impact of 6% growth each year on a (R&D) organization?

Packstation of today



Purpose of grading



Making consumer products:

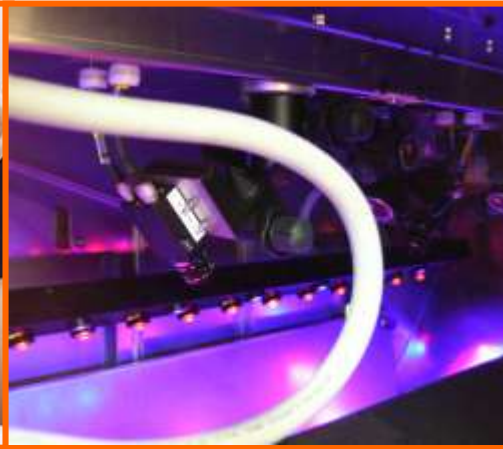
- Grade on weight / colour
- Remove offgrades
- Ensure origin/freshness
- Pack in many different packs
- Mark with correct info
- Make products ready for shipping
- Automatic administration

Efficiency: detection of offgrades

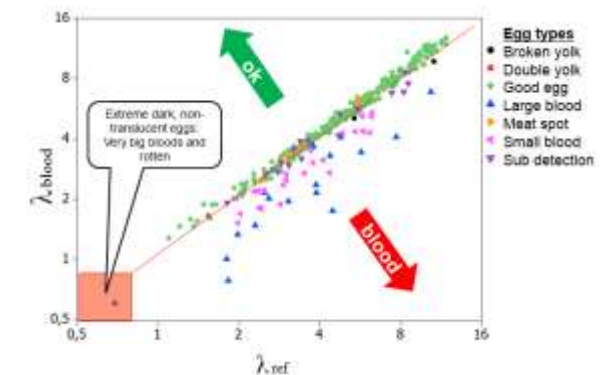
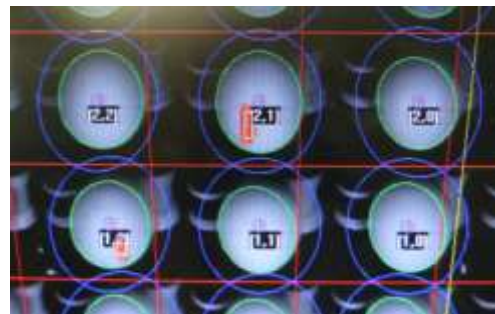
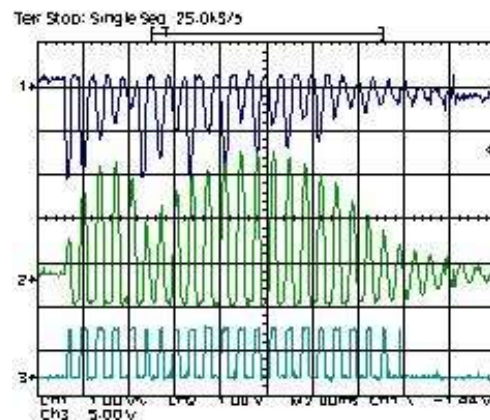
Acoustic crack detection



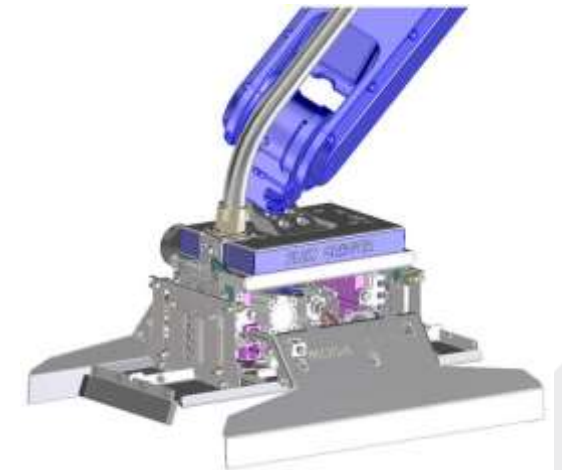
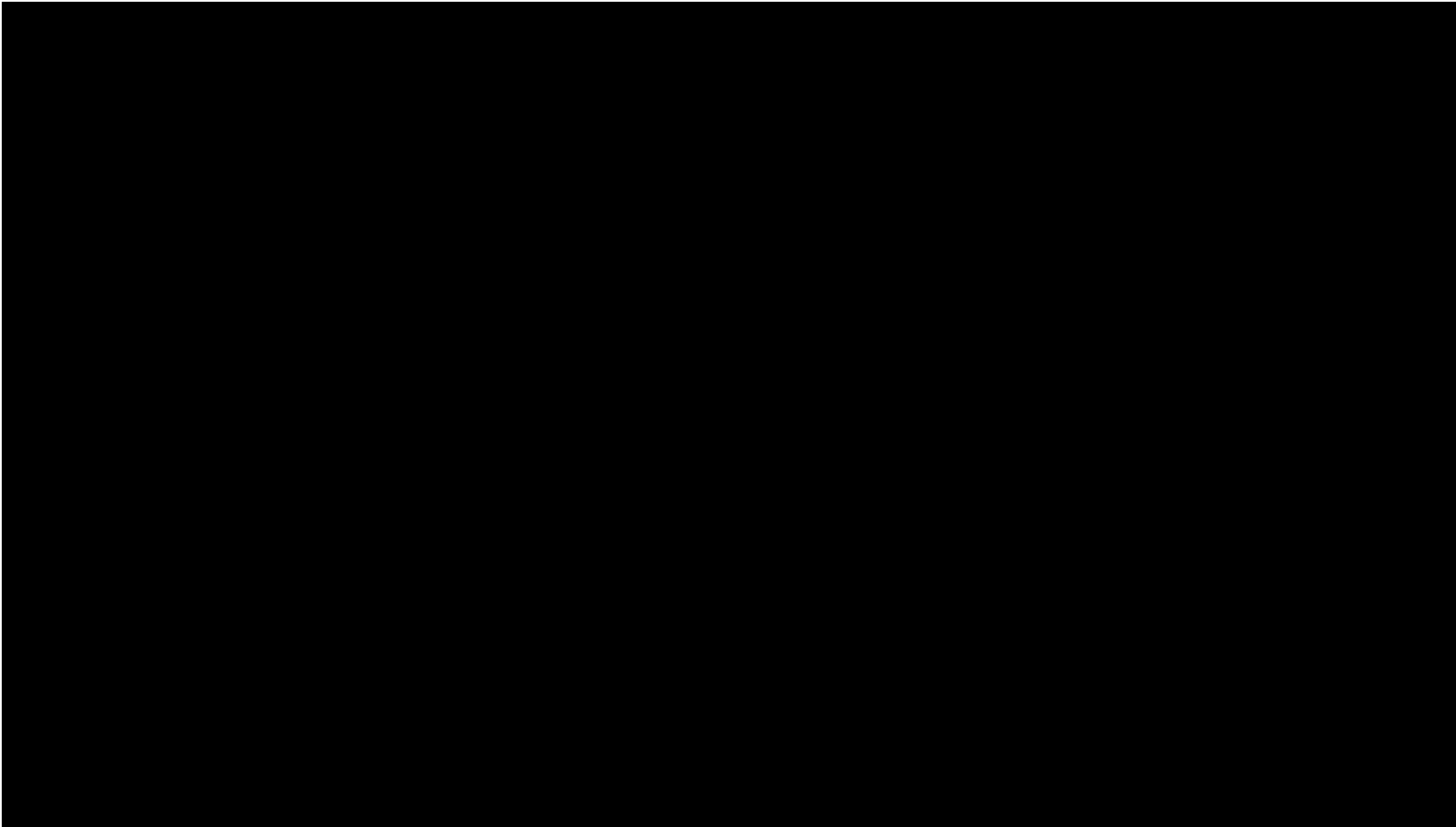
Vision dirt detection



Spectrum analysis for blood



Gripper MR Family



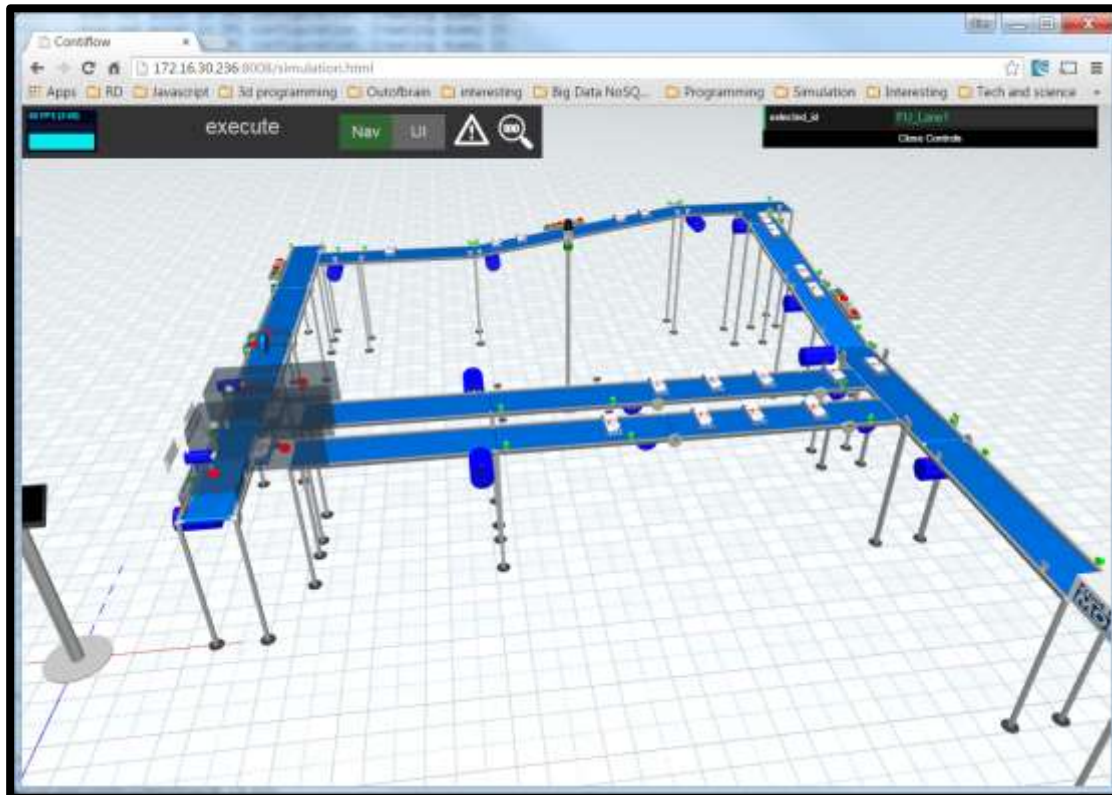
Questions for today

- Which technology made MOBA market leader? **And which innovations will keep us there?**
- What is the impact of 6% growth each year on a (R&D) organization?

The increasing importance of SW: Simulations

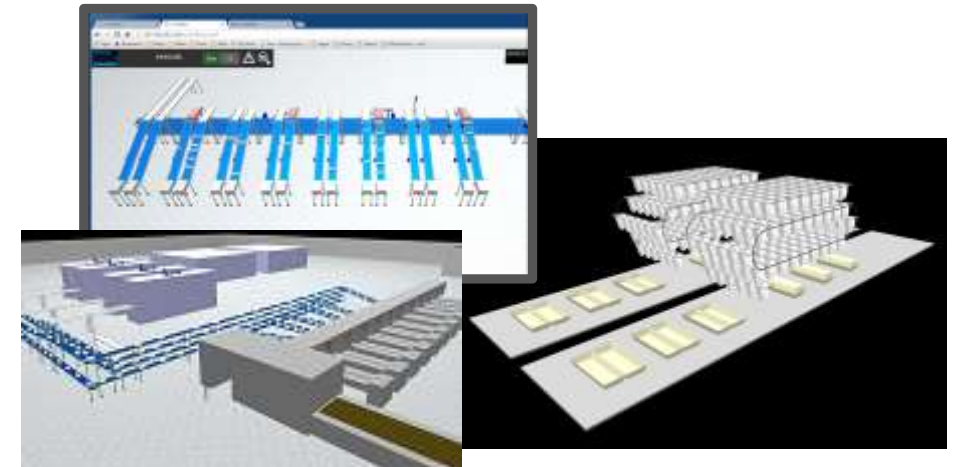
Integrated simulation, built into the software

- Desktop development + testing
- Automated testing

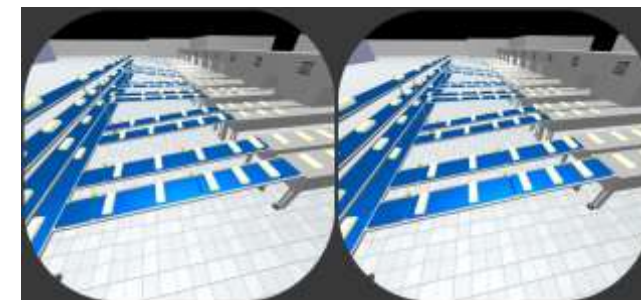


Web technology

- Remote access and visualization



VR-ready



Next step global control



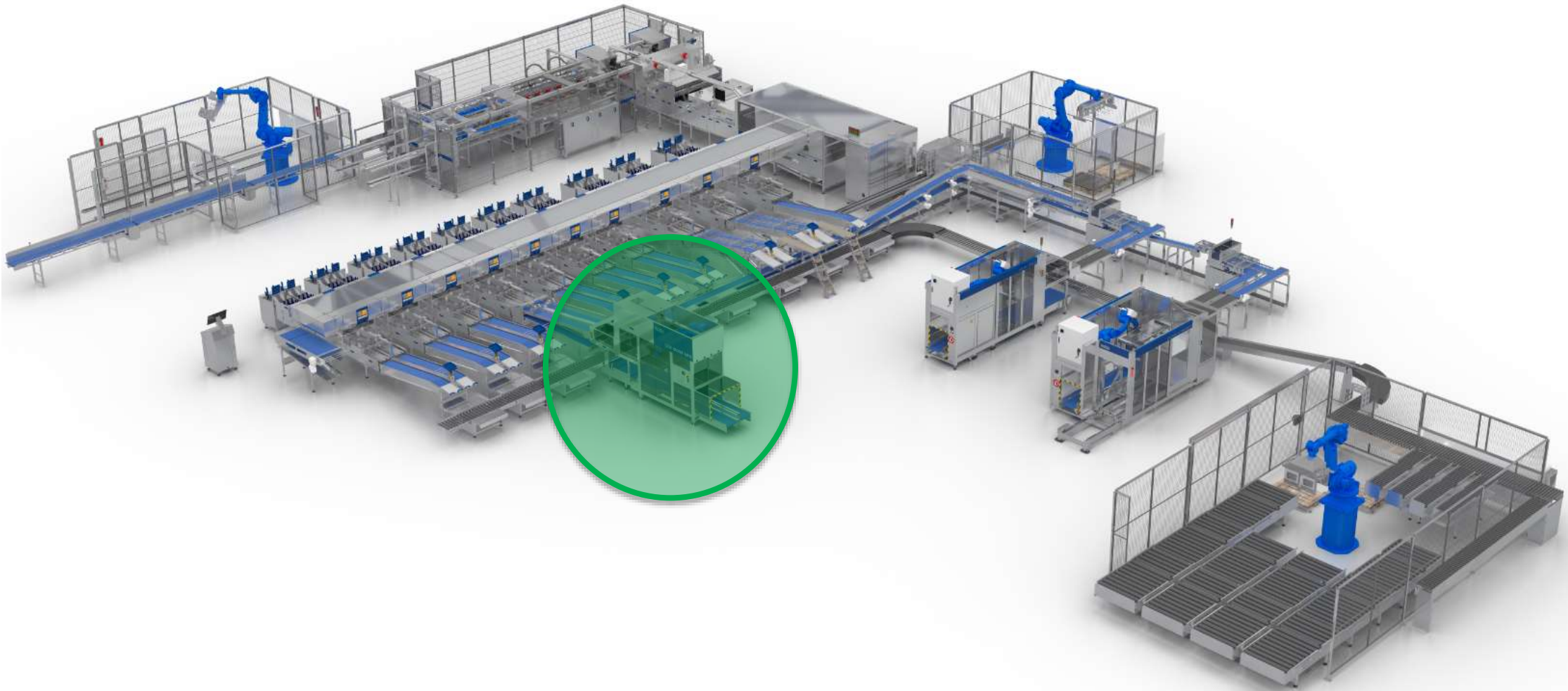
Towards switching off the lights



Questions for today

- Which technology made MOBA market leader? And which innovations will keep us there?
- **What is the impact of 6% growth each year on a (R&D) organization?**

Packstation of today

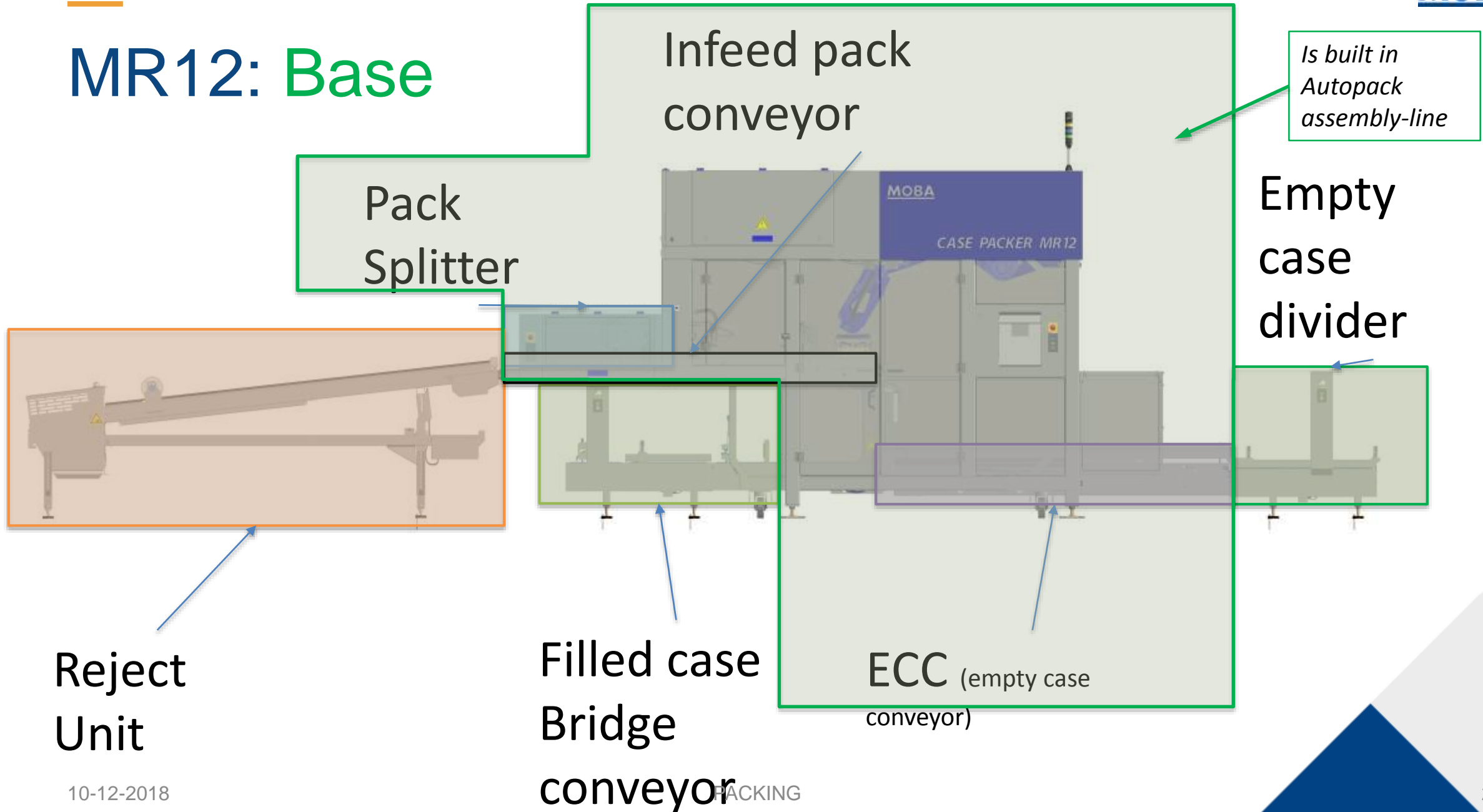


MR12

- New Packing robot directly behind the grader
- Configure to order
- Modular design
- Build in flow production



MR12: Base



MR12 update (4) – Line production



Challenging?



- Modular structure is a critical success factor
 - Fully connected to functional demands
- Introducing a Change Control Board
- Flow production is a full chain optimization
- Balancing of all assembly steps
- First time right (possibility for testing)
- Prepare for battle
 - Benefits on labor is large
 - Cost price increase is low

What do we need from our suppliers

- First time right
- No unexpected changes in products (Firmware)
- SW activation codes

Werken bij moba



+31 342 455 631

Naar corporate website

MOBA

HOME VACATURES WERKEN EN LEREN OVER MOBA CONTACT

WIJ ZIJN OP ZOEK NAAR JOU

Mensen worden beschouwd als Moba's meest waardevolle bezit. Wij zijn altijd op zoek naar zeer gemotiveerde professionals. Als u in Nederland woont, een nieuwe uitdaging zoekt en graag zou willen werken voor een wereldwijd toonaangevende producent in de eierindustrie, kunt u op de onderstaande knop klikken of naar onze pagina met vacatures gaan.

BEKIK ALLE VACATURES

<https://www.werkenbijmoba.nl/>